

Modular Drawer Cabinets

Custom Design Workbenches

Step 1 - Modular Drawer Cabinets

Choose one of the pre-engineered cabinets from our Desk High, Table High, Bench High or Mid-Range High selections on pages 8-9.

Note: Consider cabinets with 251 locking (Multiple Drawer Access), since tipping is highly unlikely.

Step 2 - Panel Legs

- Multi-formed, reinforced steel panel pre-punched for assembly
- Features knock-outs for standard two-outlet electrical fixture
- Match the height of the panel leg to the height of the cabinet chosen
- Specify color

Step 3 - Adjustable Footrest

- Multi-formed, reinforced steel channels pre-punched for assembly
- One-size, sleeved and adjustable for all length combinations
- Specify color

Step 4 - Work Surfaces

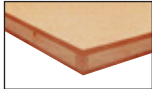
Available in Laminate, Shop Top, Steel, Hardwood, or Stainless Cover over Hardwood. Custom lengths available on special request.

Laminate (WLT) = Particle board core with plastic laminate cover.



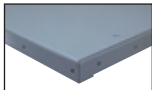
- Ideal for light-duty applications.
- 180° soft edge, chip resistant.
- Color = Putty.

Shop Top (WSP) = Medium density fiberboard core with particle board surface.



- 40% harder work surface than hardwood.
- Resistant to conventional liquids.

Steel (WSL) = 12 Gauge formed panel with reinforcing channels.



- Ideal for heavy-duty maintenance work.
- Specify color.

Hardwood (WHD) = Solid-laminated with rounded edges and sealed finish.



- Ideal for precision work.
- Sealed Kiln-dried hardwoods.
- 3/16" radius edges.

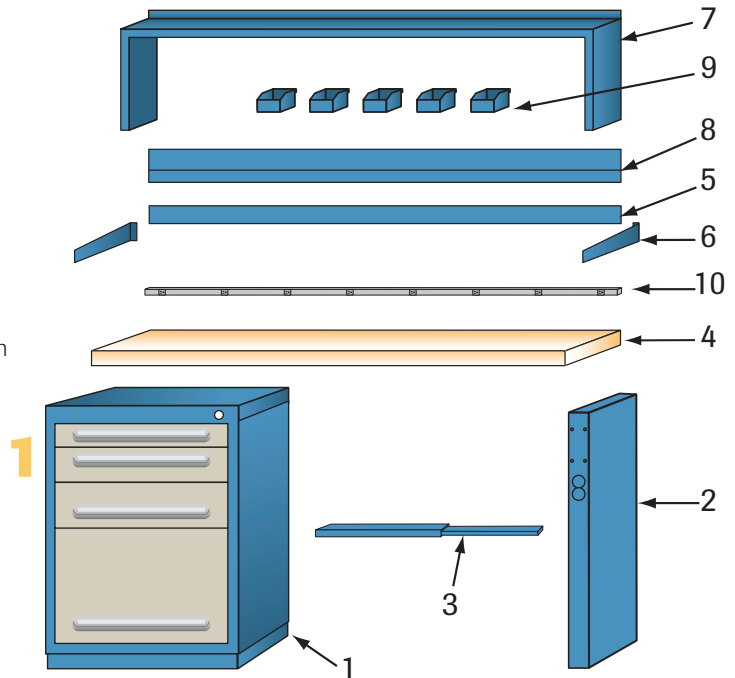
Stainless (WSS) = 16 Gauge formed stainless steel cover over hardwood.



- For the ultimate workbench application.

Step 5 - Back Stops

- Helps to keep small parts from rolling off work-surface
- Extends 3" above work surface
- Match the length of the Back Stop to the work surface chosen
- Specify color



2

PANEL LEGS	
Cat. No.	Cabinet Height
251WPL270	Desk (26-7/8")
251WPL310	Table (30-1/8")
251WPL350	Bench (33-1/4")
251WPL400	Mid-Range (37-3/16")

3

ADJUSTABLE FOOTREST	
Cat. No.	Length Adjust
240853	27" to 46-1/4"

4

WORK SURFACES	
Cat. No.	Style
251WLT60	30"d x 1-5/8"t x 60"w
251WLT72	30"d x 1-5/8"t x 72"w
251WSP60	30"d x 1-3/4"t x 60"w
251WSP72	30"d x 1-3/4"t x 72"w
251WSL60	30"d x 1-3/4"t x 60"w
251WSL72	30"d x 1-3/4"t x 72"w
251WHD60	30"d x 1-3/4"t x 60"w
251WHD72	30"d x 1-3/4"t x 72"w
251WSS60	30"d x 1-13/16"t x 60"w
251WSS72	30"d x 1-13/16"t x 72"w

5

BACK STOPS	
Cat. No.	Surface Width
251WBS60	60"
251WBS72	72"