

Steel Shelving



Shelving Features

Shelf Clips

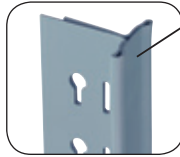
Quickly lock into place, on either side of uprights. Disengages easily to re-position shelves, no tools needed.

T-Post Uprights

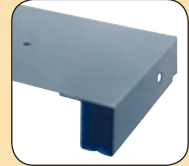
Patented design, formed of tough, durable hot-rolled steel affords easy shelf adjustments on 1/2" centers using shelf clips.



Shelf Clips
All shelving units come with 4 shelving clips.



T-Post Uprights



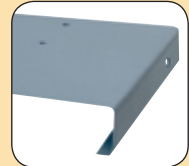
22-Gauge Medium-Duty Box "W"



20-Gauge Heavy-Duty Box "W"



18-Gauge Extra Heavy-Duty Box "W"



18-Gauge Traditional Flanged

Shelf Options

22-Gauge Medium-Duty, Box "W" shelves provide up to 600 lb. capacity* for storage of aerosols, tools, drills, safety supplies, etc.

20-Gauge Heavy-Duty, Box "W" shelves provide up to 900 lb. capacity* to hold grinders, wheels, gears, sprockets, and other similar articles.

18-Gauge Extra Heavy-Duty, Box "W" shelves provide up to 1300 lb. capacity* for storing motors, pumps, and other heavy equipment.

18-Gauge Traditional Flanged shelves provide up to 700 lb. capacity* for electrical fittings, clamps, etc.

**Capacities are based on evenly distributed load. See page 39 Maximum load capacity: 8000 lbs. per section and a maximum of 18" shelf spacing with no seismic.*

Shelf Load Capacities for 8000 Series Shelving

Size W x D	22-Ga. Medium Box "W"		20-Ga. Heavy Duty Box "W"		18-Ga. Extra Heavy Duty Box "W"		18-Ga. Traditional Flanged	
	Cat. No.	Capacity	Cat. No.	Capacity	Cat. No.	Capacity	Cat. No.	Capacity
30" x 30"	N/A	N/A	8593H	800 lbs.	N/A	N/A	N/A	N/A
36" x 12"	8560M	600 lbs.	8560H	800 lbs.	8560X	1150 lbs.	8560	550 lbs.
36" x 15"	8584M	600 lbs.	8584H	825 lbs.	8584X	1200 lbs.	8584	600 lbs.
36" x 18"	8561M	600 lbs.	8561H	900 lbs.	8561X	1300 lbs.	8561	650 lbs.
36" x 24"	8562M	600 lbs.	8562H	800 lbs.	8562X	1150 lbs.	8562	700 lbs.
36" x 30"	N/A	**	8585H	740 lbs.	8585X	950 lbs.	8585	500 lbs.
36" x 36"	N/A	**	8586H	640 lbs.	8586X	850 lbs.	8586	450 lbs.
42" x 12"	N/A	**	8565H	650 lbs.	8565X	830 lbs.	8565	500 lbs.
42" x 15"	N/A	**	8587H	650 lbs.	8587X	880 lbs.	8587	475 lbs.
42" x 18"	N/A	**	8566H	720 lbs.	8566X	900 lbs.	8566	450 lbs.
42" x 24"	N/A	**	8567H	700 lbs.	8567X	880 lbs.	8567	500 lbs.
42" x 30"	N/A	**	8588H	650 lbs.	8588X	850 lbs.	8588	400 lbs.
42" x 36"	N/A	**	8589H	625 lbs.	8589X	820 lbs.	8589	325 lbs.
48" x 12"	N/A	**	8300H	600 lbs.	8300X	750 lbs.	8300	350 lbs.
48" x 15"	N/A	**	8590H	600 lbs.	8590X	700 lbs.	8590	325 lbs.
48" x 18"	N/A	**	8301H	600 lbs.	8301X	700 lbs.	8301	300 lbs.
48" x 24"	N/A	**	8302H	560 lbs.	8302X	750 lbs.	8302	300 lbs.
48" x 30"	N/A	**	8591H	540 lbs.	8591X	730 lbs.	8591	300 lbs.
48" x 36"	N/A	**	8592H	480 lbs.	8592X	640 lbs.	8592	300 lbs.

***Please consult your factory representative, Lyon does not generally recommend 22-gauge on industrial shelving requirements larger than 36" x 24"*