

# Modular Drawer Cabinets

## Work Bench Kit Style 1

- Kit includes panel leg, adjustable footrest, and work surface
- All work surfaces are 30" deep
- Kit can be assembled to either side of cabinet
- Field installed only

### Step 1 - Modular Drawer Cabinets

Choose one of the pre-engineered cabinets from our Desk High, Table High, Bench High or Mid-Range High selections on pages 6, 7, 8, or 14 of this catalog in either Standard or Slender widths.

*Note: Consider cabinets with 251 locking (Multiple Drawer Access), since tipping is highly unlikely.*

### Step 2 - Work Bench Kit

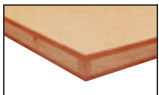
Match the cabinet to the cabinet height of the kits in the table to the right. Choose the work surface for your work bench. *Note: The part number chosen in Step 1 combined with the part number chosen in Step 2, creates a Work Bench.*

**Laminate** = Particle board core with plastic laminate cover.



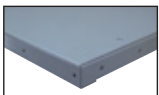
- Ideal for light-duty applications
- 180° soft edge, chip resistant
- Color = Putty
- 1-5/8" Thick
- 800 lb. capacity

**Shop Top** = Medium density fiberboard core with particle board surface



- 40% harder work surface than hardwood
- Resistant to conventional liquids
- 1-3/4" Thick
- 1,100 lb. capacity

**Steel** = 12 Gauge formed panel with reinforcing channels.



- Ideal for heavy-duty applications
- 1-3/4" Thick
- 1,700 lb. capacity

**Hardwood** = Solid-laminated with rounded edges and sealed finish.



- Ideal for precision work
- Sealed Kiln-dried hardwoods
- 3/16" radius edges
- 1-3/4" Thick
- 5,000 lb. capacity


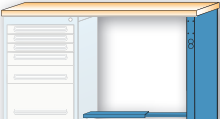
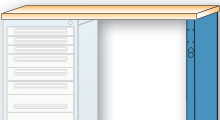
**Stainless** = 16 Gauge formed stainless steel cover over hardwood.



- For the ultimate work bench application
- 1-13/16" Thick
- 5,000 lb. capacity

Custom lengths available on special request.

*Please note: catalog numbers do not include cabinet. (see step 1).*

Work Surface Height	Cat. No.	Work Surface
 Desk (28-5/8" High)	■ 251270WB1001	60"w Laminate
	■ 251270WB1002	60"w Shop Top
	■ 251270WB1003	60"w Steel
	■ 251270WB1004	60"w Hardwood
	■ 251270WB1005	60"w Stainless
	■ 251270WB1011	72"w Laminate
	■ 251270WB1012	72"w Shop Top
	■ 251270WB1013	72"w Steel
	■ 251270WB1014	72"w Hardwood
	■ 251270WB1015	72"w Stainless
 Table (31-7/8" High)	■ 251310WB1001	60"w Laminate
	■ 251310WB1002	60"w Shop Top
	■ 251310WB1003	60"w Steel
	■ 251310WB1004	60"w Hardwood
	■ 251310WB1005	60"w Stainless
	■ 251310WB1011	72"w Laminate
	■ 251310WB1012	72"w Shop Top
	■ 251310WB1013	72"w Steel
	■ 251310WB1014	72"w Hardwood
	■ 251310WB1015	72"w Stainless
 Bench (35" High)	■ 251350WB1001	60"w Laminate
	■ 251350WB1002	60"w Shop Top
	■ 251350WB1003	60"w Steel
	■ 251350WB1004	60"w Hardwood
	■ 251350WB1005	60"w Stainless
	■ 251350WB1011	72"w Laminate
	■ 251350WB1012	72"w Shop Top
	■ 251350WB1013	72"w Steel
	■ 251350WB1014	72"w Hardwood
	■ 251350WB1015	72"w Stainless
 Mid-Range (39" High)	■ 251400WB1001	60"w Laminate
	■ 251400WB1002	60"w Shop Top
	■ 251400WB1003	60"w Steel
	■ 251400WB1004	60"w Hardwood
	■ 251400WB1005	60"w Stainless
	■ 251400WB1011	72"w Laminate
	■ 251400WB1012	72"w Shop Top
	■ 251400WB1013	72"w Steel
	■ 251400WB1014	72"w Hardwood
	■ 251400WB1015	72"w Stainless

### Color Selection

Determine which color you desire and add the two (2) letter ■ digits as a prefix to the Work Bench chosen.

