

# Storage Rack

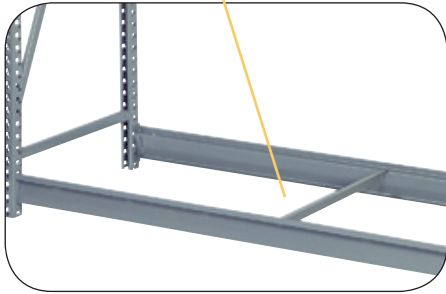
## How to Order a Custom Bulk Storage Rack

### Step 4

#### Select Front-to-Back Supports

One to four supports per level are required based on beam width and type of decking (see chart below).

Used to minimize beam rotation under heavy loads. Also serves as a plywood support. No hardware or tools needed.



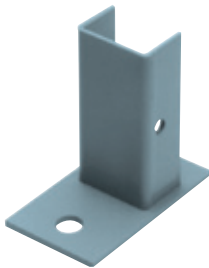
Rack Depth	Front-to-Back Supports Cat. No.
15"	65815
18"	65818
24"	65824
30"	65830
36"	65836
42"	65842
48"	65848

#### Minimum required when used with:

Beam Width	Plywood/ Particle Board	Solid/Ribbed/ Flat Wire/ No Deck
48"	2	1
60"	2	1
72"	3	2
84"	3	2
96"	4	2

### Step 5

#### Select Accessories



#### Anchoring Foot

To anchor upright assembly to floor. Dove Gray only.

**No. 65130**

#### Wedge Anchor

3/8" dia x 3", 1 per post

**No. 8861**



#### Back-To-Wall Support

Bolts to upright member and wall to maintain shelving stability. Overall Extension: 12" x 17 1/4".

**No. 65145**



#### Back-To-Back Support

Ties bulk storage rack back to back, maintains stability and spacing without interfering with storage space. Overall Extension: 12" x 17 1/2"

**No. 65140**



#### For Mezzanine Applications

#### Mezzanine Splice Channels

For two-level Bulk Storage Rack applications, simply insert reinforcing splice channels into bottom upright assembly posts and fit second-level upright assembly posts over channel extensions. The galvanized splice channels provide rigidity at the splice.

**No. 65120**



### EASILY INTEGRATE BULK STORAGE RACKS

Bulk Storage Racks integrates easily with 8000 Series shelving for a complete storage system.

8000 Series/BSR Integration Clip **No. 65160**

