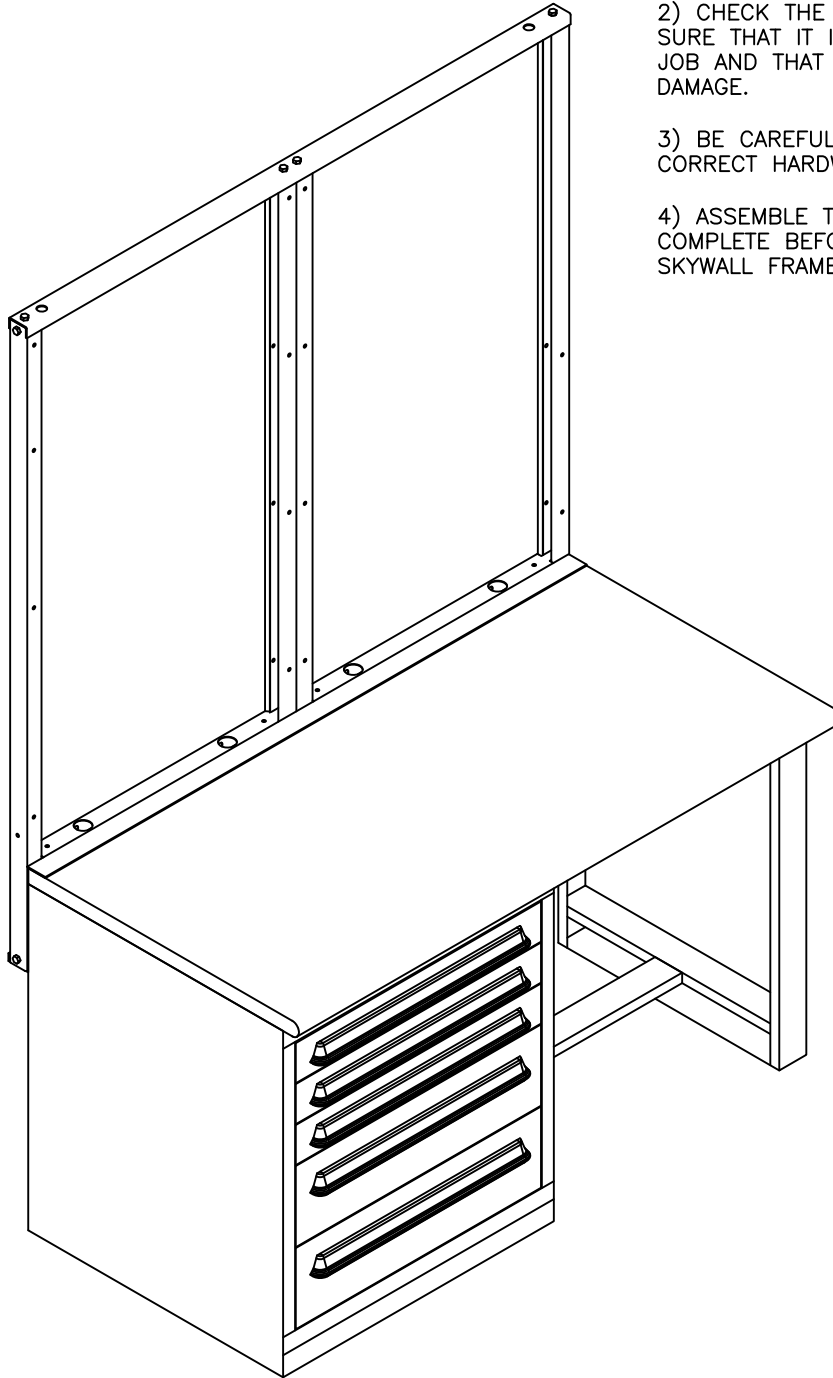


GENERAL INSTRUCTIONS:

- 1) PLEASE READ COMPLETE ASSEMBLY INSTRUCTIONS BEFORE ATTEMPTING TO ASSEMBLE.
- 2) CHECK THE MATERIAL TO BE SURE THAT IT IS CORRECT FOR THE JOB AND THAT THERE IS NO DAMAGE.
- 3) BE CAREFUL TO USE THE CORRECT HARDWARE SPECIFIED.
- 4) ASSEMBLE THE WORKBENCH COMPLETE BEFORE ASSEMBLING SKYWALL FRAME.




MDC SKYWALL II FRAME ASSEMBLY 48"/60"/72"

MISSING PARTS OR IN NEED OF ASSEMBLY ASSISTANCE?

SHEET 1 OF 6

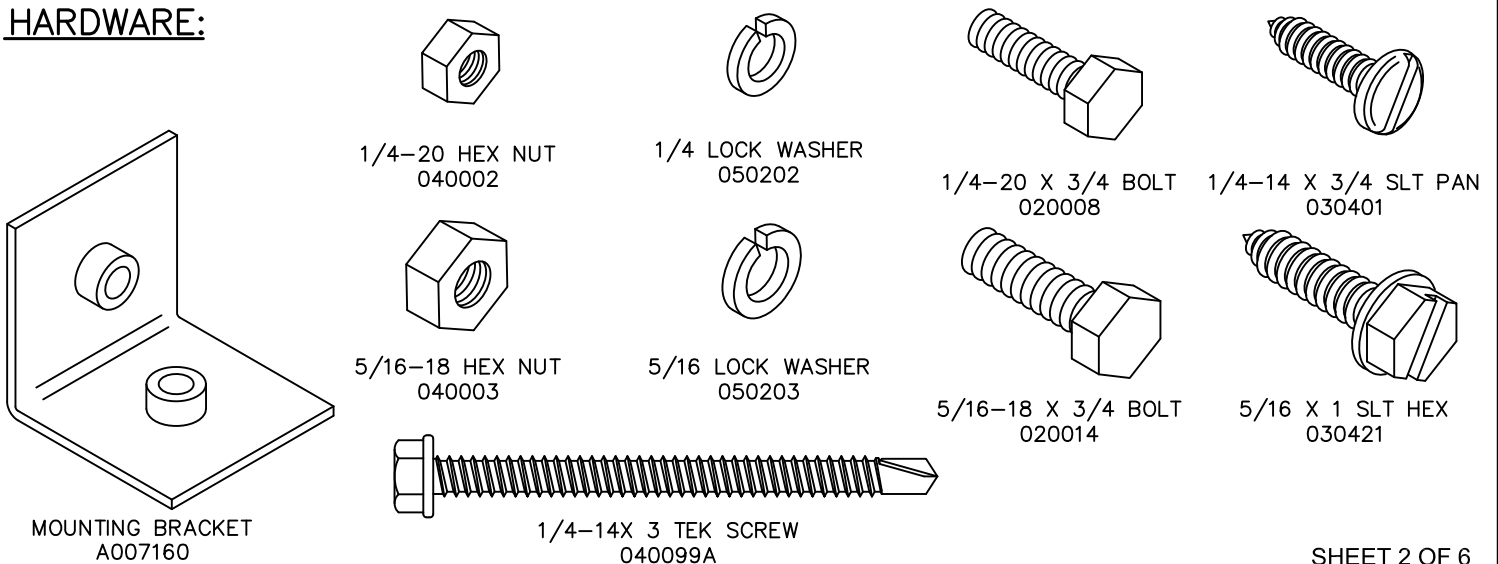
Contact us direct for fast friendly service (800) 433-8488

International calls (630) 892-8941 | WEB: WWW.LYONWORKSPACE.COM | Fax (800) 367-6681

LYON  LYON WORKSPACE PRODUCTS
P.O. BOX 671
AURORA, IL 60507
ISO 9001
AS408

| PART NUMBER | DESCRIPTION | 48" | 60" | 72" |
|-------------|-----------------------------------|-----|-----|-----|
| A007169 | FRAME TOP 48" | 1 | | |
| A007170 | SUPPORT BRACKET 48" FRAME | 1 | | |
| A007394 | FRAME SUPPORT PAN 48" | 1 | | |
| A007158 | FRAME TOP 60" | | 1 | |
| A007161 | SUPPORT BRACKET 60" FRAME | | 2 | |
| A007393 | FRAME SUPPORT PAN 60" | | 1 | |
| A007171 | FRAME TOP 72" | | | 1 |
| A007172 | SUPPORT BRACKET 72" FRAME | | | 2 |
| A007396 | FRAME SUPPORT PAN 72" | | | 1 |
| A007395 | COLUMN UPRIGHT FOR MDC | 2 | 4 | 4 |
| A007367 | ATTACHMENT BRACKET FOR MDC | 2 | 2 | 2 |
| A007160 | MOUNTING BRACKET | 4 | 8 | 8 |
| 020008 | 1/4-20 X 3/4" GRADE 2 | 10 | 17 | 17 |
| 020014 | 5/16-18 X 3/4" GRADE 2" | 8 | 12 | 12 |
| 030401 | 1/4-14 X 3/4 SLT PAN (WOOD SCREW) | 3 | 6 | 6 |
| 040002 | 1/4-20 HEX NUT | 2 | 3 | 3 |
| 040003 | 5/16-18 HEX NUT | 8 | 12 | 12 |
| 050202 | 1/4 LOCK WASHER | 2 | 3 | 3 |
| 050203 | 5/16 LOCK WASHER | 8 | 12 | 12 |
| 030421 | 5/16 X 1 SLT HEX | 4 | 4 | 4 |
| 050003A | 5/16" FLAT WASHER | 8 | 12 | 12 |
| 040099A | 1/4-14 X 3" TEK SCREW | 4 | 6 | 6 |

HARDWARE:



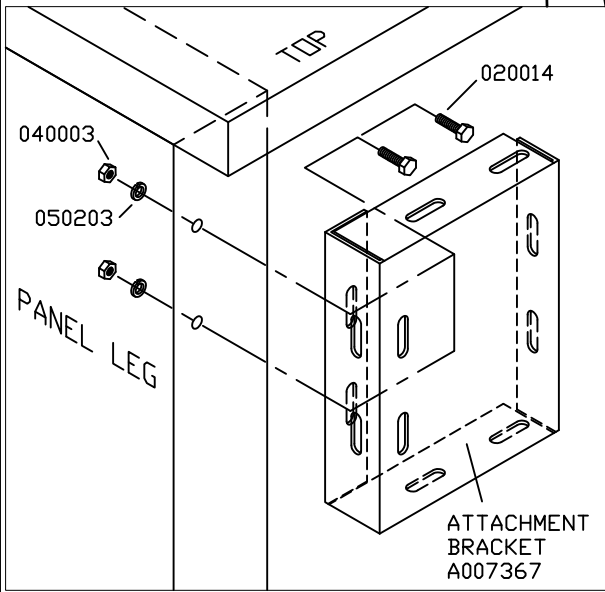
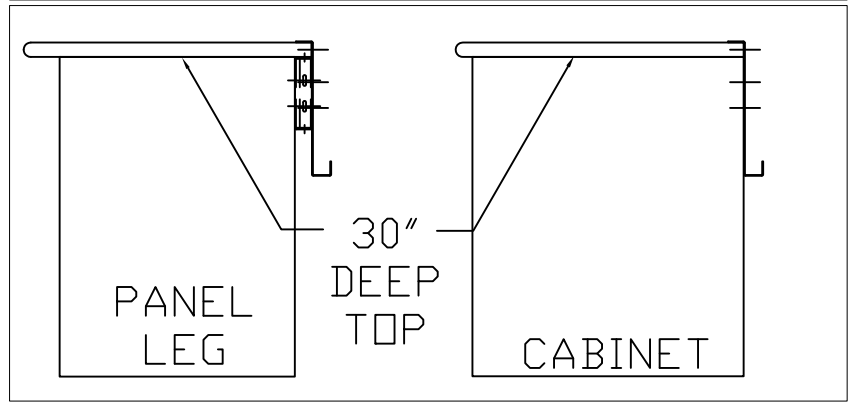
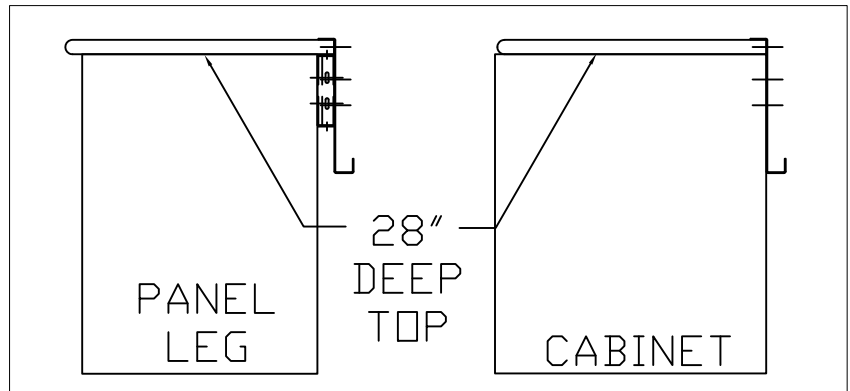
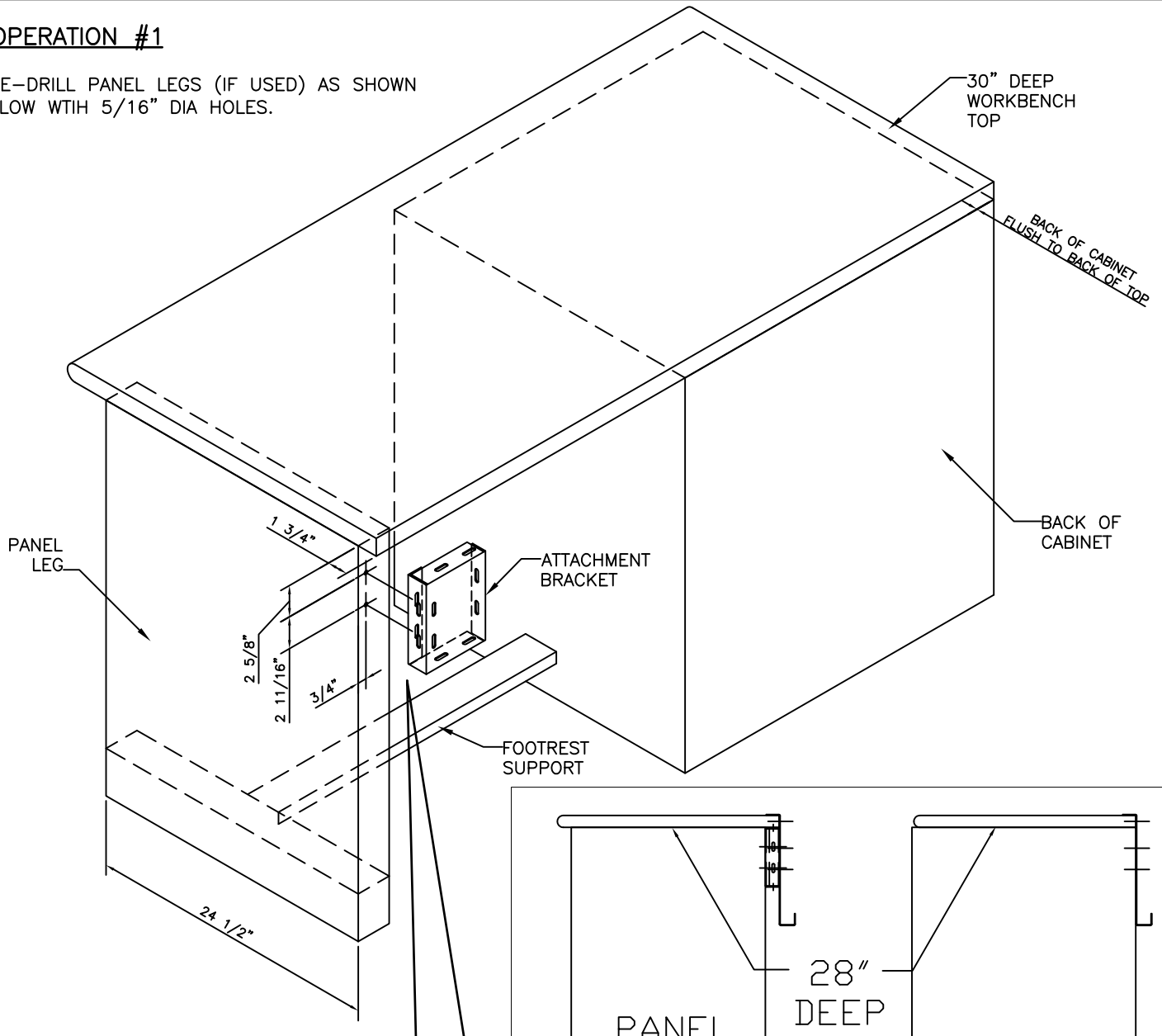
MDC SKYWALL II FRAME ASSEMBLY 48"/60"/72"

Contact us direct for fast friendly service (800) 433-8488

International calls (630) 892-8941 | WEB: WWW.LYONWORKSPACE.COM | Fax (800) 367-6681

OPERATION #1

PRE-DRILL PANEL LEGS (IF USED) AS SHOWN BELOW WITH 5/16" DIA HOLES.



MDC SKYWALL II FRAME ASSEMBLY 48"/60"/72"

Contact us direct for fast friendly service (800) 433-8488
 International calls (630) 892-8941 | WEB: WWW.LYONWORKSPACE.COM | Fax (800) 367-6681

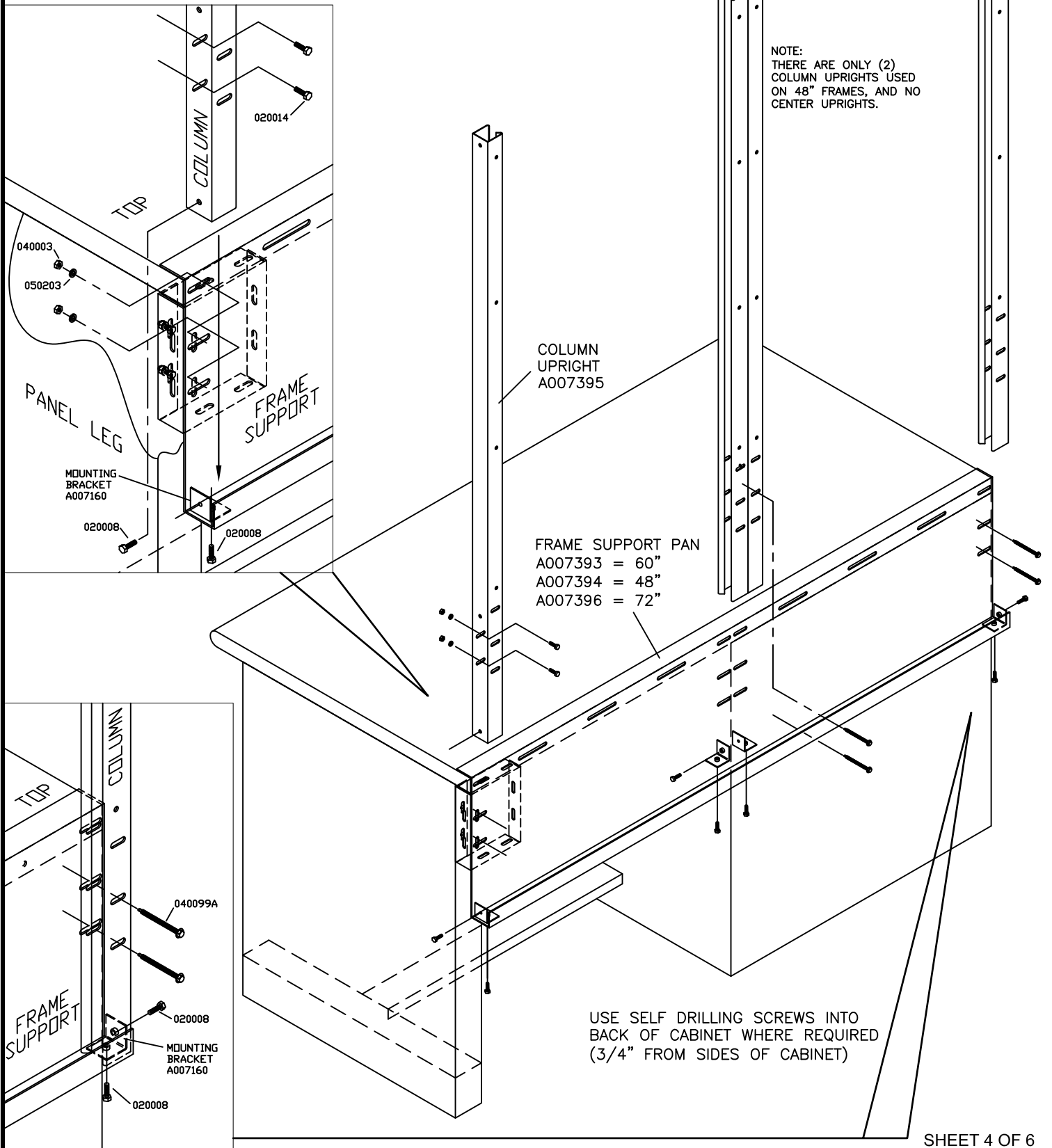


OPERATION #2

PLACE FRAME SUPPORT PAN ON TOP OF WORK SURFACE. ATTACH MOUNTING BRACKETS.

OPERATION #3

INSTALL COLUMN UPRIGHTS AND ATTACH AS SHOWN.




SHEET 4 OF 6

MDC SKYWALL II FRAME ASSEMBLY 48"/60"/72"

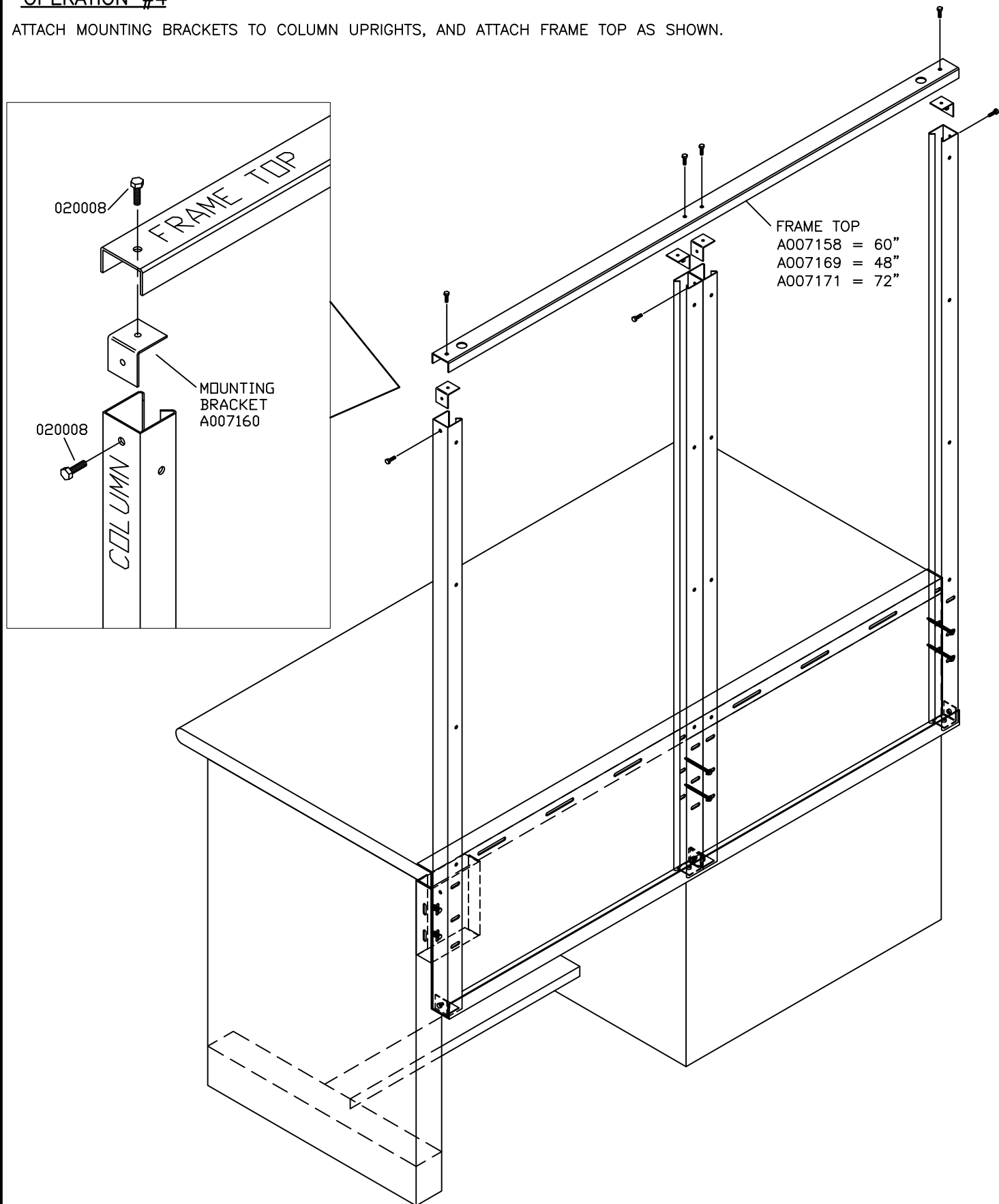
Contact us direct for fast friendly service (800) 433-8488

International calls (630) 892-8941 | WEB: WWW.LYONWORKSPACE.COM | Fax (800) 367-6681

LYON  LYON WORKSPACE PRODUCTS
P.O. BOX 671
AURORA, IL 60507

OPERATION #4

ATTACH MOUNTING BRACKETS TO COLUMN UPRIGHTS, AND ATTACH FRAME TOP AS SHOWN.



SHEET 5 OF 6

MDC SKYWALL II FRAME ASSEMBLY 48"/60"/72"

Contact us direct for fast friendly service (800) 433-8488

International calls (630) 892-8941 | WEB: WWW.LYONWORKSPACE.COM | Fax (800) 367-6681

LYON  LYON WORKSPACE PRODUCTS
P.O. BOX 671
A5426 ISO 9001 AURORA, IL 60507

