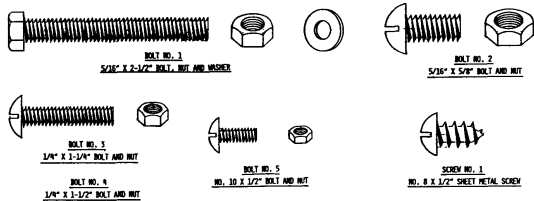


DETAIL SHOWING ASSEMBLY OF HINGE AND ATTACHMENT OF HINGE TO UPRIGHT TEES AND SWINGING PANEL.

DETAIL 'A'

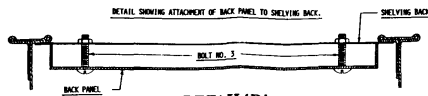


ASSEMBLY OPERATIONS

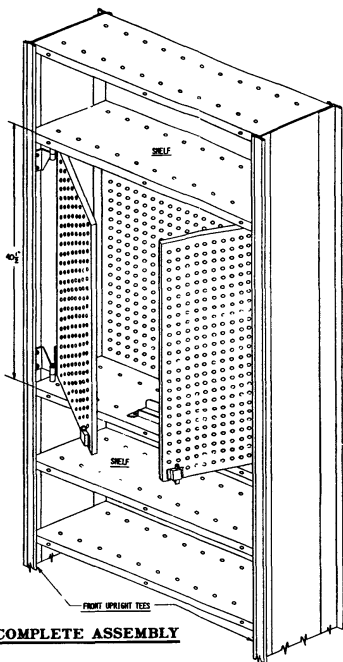
BEFORE STARTING THE INSTALLATION OF THIS UNIT, MAKE CERTAIN THAT THE SHELVING SECTION IN WHICH IT IS TO BE INSTALLED HAS BEEN ACCURATELY LEVELLED AND PLUMBED. THIS IS ESSENTIAL FOR PROPER OPERATION OF THE SWINGING PANELS. THIS UNIT REQUIRES SHELF SPACING OF 40-1/2" FOR INSTALLATION OF SWINGING PANEL UNIT.

1. SET A BACK PANEL IN PLACE AND BOLT IT TO SHELVING WITH FOUR NO. 3 BOLTS AND NUTS. REFER TO DETAIL "B."
 2. BOLT A PANEL HINGE LEAF TO THE TOP AND BOTTOM CORNERS OF TWO SWINGING PANELS, MAKING A RIGHT HAND AND LEFT HAND PANEL. USE TWO NO. 4 BOLTS AND NUTS FOR EACH HINGE LEAF. REFER TO DETAIL "A."
 3. ATTACH AN UPRIGHT HINGE LEAF TO EACH PANEL HINGE LEAF, INSERTING A HINGE BUSHING INSIDE THE KNUCKLES OF THE HINGE LEAVES USE A NO. 1 BOLT AND WAFFLE BACK NUT WITH A COT WASHER UNDER THE BOLT HEAD AND NUT. REFER TO DETAIL "A."
- NOTE: WHEN ASSEMBLING THE BOTTOM HINGE, THE PANEL HINGE LEAF KNUCKLE GOES BELOW THE UPRIGHT HINGE LEAF KNUCKLE. ON THE TOP HINGE THE POSITION OF THE TWO TOP HINGE KNUCKLES IS REVERSED. ALSO, ON THE BOTTOM HINGE THE NUT IS ON TOP AND ON THE TOP HINGE IT IS ON THE BOTTOM.

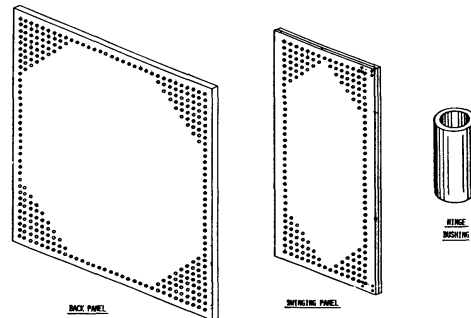
4. BOLT THE RIGHT HAND AND LEFT HAND SWINGING PANELS TO THE RIGHT AND LEFT HAND FRONT UPRIGHT TEES WITH TWO NO. 2 BOLTS THROUGH THE UPRIGHT LEAF OF EACH HINGE. THE BOTTOM HINGE AND HOLEY THROUGH THE SECOND AND THIRD OPEN HOLES IN TEES ABOVE THE SHELF. REFER TO DETAIL "A." LEAVE NUTS LOOSE FOR NOW.
5. BOLT THE PANEL STOP TO THE BOTTOM SHELF WITH TWO NO. 5 BOLTS AND NUTS, AS INDICATED IN DETAIL "C."
6. ATTACH A LATCH TO EACH SWINGING PANEL WITH FOUR NO. 1 SHEET METAL SCREWS. REFER TO DETAIL "C."
7. ADJUST EACH SWINGING PANEL VERTICALLY (SLOTS IN THE UPRIGHT HINGE LEAVES PERMIT THIS) UNTIL THE BOLT IN EACH LATCH ENGAGES THE PANEL STOP SATISFACTORILY. DRAW UP THE NUTS ON THE HINGE BOLTS.
8. INSTALL ANY ACCESSORIES REQUIRMENT TO THE BACK PANEL OR THE SWINGING PANELS.



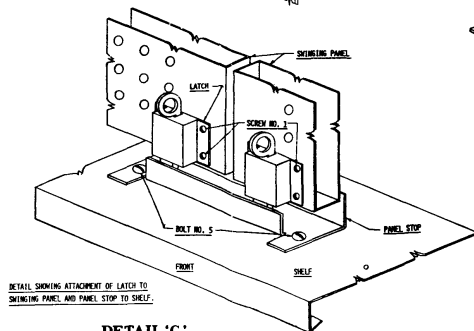
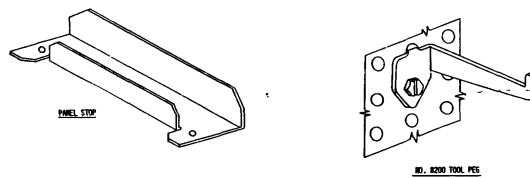
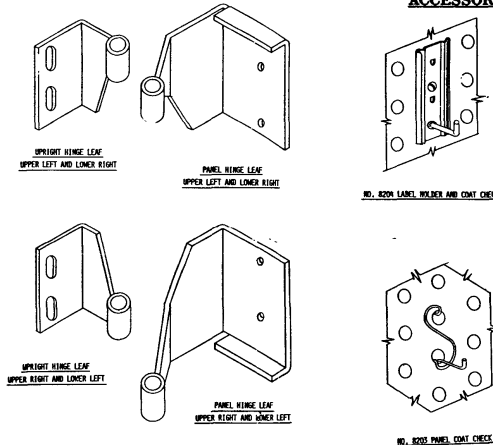
DETAIL 'B'



COMPLETE ASSEMBLY



ACCESSORIES



DETAIL 'C'

ASSEMBLY INSTRUCTIONS FOR SWINGING PANEL N° 8195 FOR LYON STEEL SHELVING

LYON METAL PRODUCTS, INCORPORATED
GENERAL OFFICES AT AUBURN, ILLINOIS
FACTORIES AT AUBURN, ILL. 1088-PA; LOS ANGELES, CAL.

REVISED
10-1-54 REVISED TO SHOW 8000 SERIES
10-18-54 REVISED 8000 TOOL PIN SCREW HEAD

10642-BA