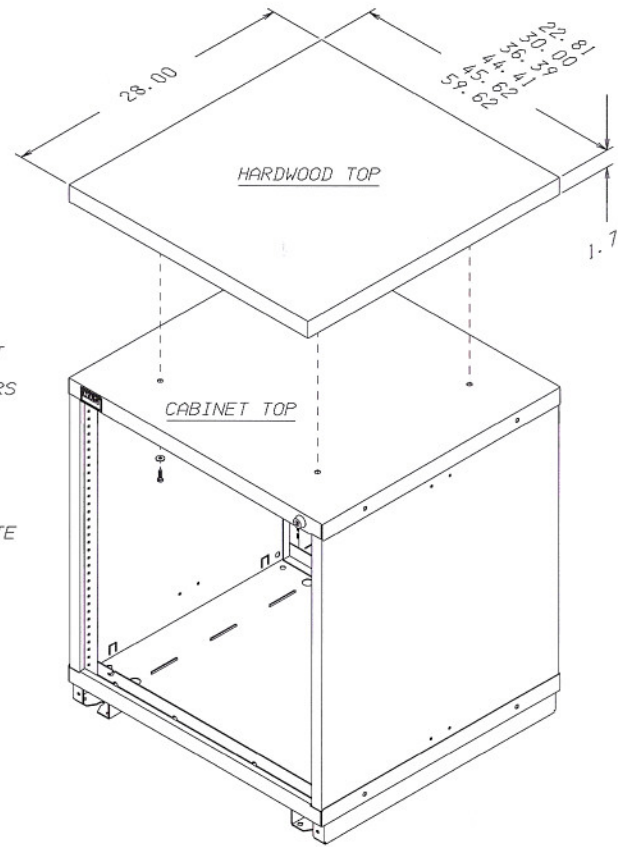
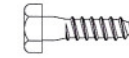


INSTALLATION OPERATIONS

1. REFER TO OWNERS MANUAL FOR CABINET INSTALLATION AND ANCHORING.
2. PILOT HOLES MUST BE DRILLED INTO THE HARDWOOD TOP. DRILL FOUR (4) 13/64" DIAMETER HOLES ONE INCH (1") DEEP PER DETAIL 1.
3. KNOCKOUT HOLES ARE PROVIDED ON THE TOP OF THE CABINET. PUNCH THESE OUT WITH A SCREWDRIVER OR OTHER TOOL.
4. BEFORE SECURING THE HARDWOOD TOP TO THE CABINET TOP, REMOVE SUFFICIENT DRAWERS AND CARRIER ASSEMBLIES. MARK SPECIFIC LOCATIONS OF THE DRAWERS AND CARRIERS FOR REINSTALLATION.
5. ATTACH THE HARDWOOD TOP TO THE CABINET TOP WITH THE SUPPLIED FOUR (4) 1/4" x 1" LONG LAG SCREWS AND 1/4" PLAIN WASHERS. BE SURE TO LUBRICATE THE THREADS OF THE LAG SCREWS TO ASSURE EASIER TIGHTENING. REPLACE DRAWERS AND CARRIERS INTO SPECIFIC LOCATIONS AND CHECK FOR PROPER DRAWER OPERATION.

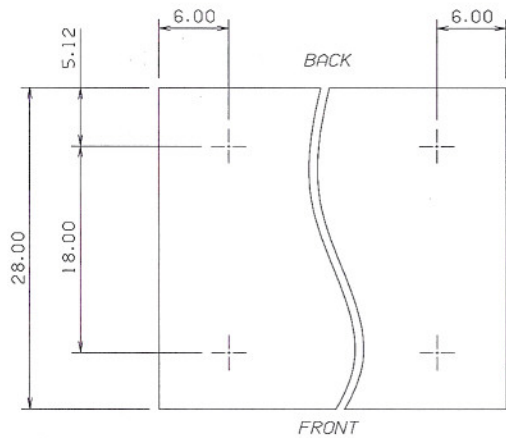


(4) 1/4" FLAT WASHER

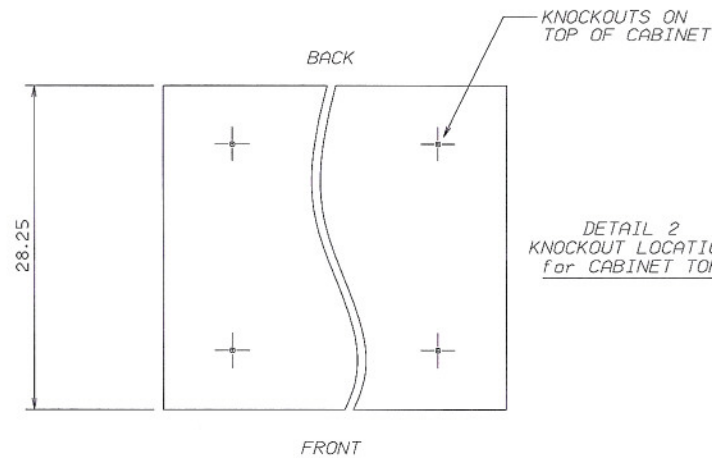


(4) 1/4" x 1" HEX HEAD LAG SCREW

SUPPLIED FASTENERS



DETAIL 1
DRILL PATTERN
for HARDWOOD TOP



DETAIL 2
KNOCKOUT LOCATION
for CABINET TOP

△	REVISED FOR KNOCKOUTS	0575	05-20-01	RE
△	UPDATED WITH 36 WIDE	0475	08-11-02	RE
△	REVISED FOR NEW MDC CABINET	0376	10-18-99	RE
△	REVISED		10-05-94	
△	RELEASED		01-20-90	
SYM	REVISION	ECN	DATE	BY

NOTES:

- 1) ALL DIMENSIONS ARE INCHES
- 2) TOLERANCES (UNLESS OTHERWISE NOTED)
DECIMAL: .XX = ±.03
.XXX = ±.015
ANGULAR: = ±1°
- 3) REMOVE ALL SHARP EDGES AND BURRS

MATERIAL

RAW P/N	WEIGHT(LB)	FINISH:
100562	---	---
DATE	REDRAWN BY	CHECKED BY
01-20-90	RE	DV

LYON LYON METAL PRODUCTS
PO BOX 671 AURORA, IL 60507
(800) 323-0082 FAX: (800) 367-6681

DESCRIPTION
MDCII INSTALLATION - HARDWOOD TOP

SHEET	DWG NUMBER	REV
	5171-DA	5

NOTICE: THIS IS A CONFIDENTIAL DISCLOSURE LOANED BY LYON METAL PRODUCTS FOR REFERENCE PURPOSES ONLY