

GENERAL INSTRUCTIONS

- 1.) BE SURE TO USE A LOCKWASHER UNDER EVERY BOLT HEAD WHEN THE INSTRUCTIONS SPECIFY.
- 2.) WOOD SCREWS FOR ATTACHING RISER SHELF SUPPORTS TO A WOOD BENCH TOP ARE NOT SUPPLIED BY LYON. CUSTOMER IS TO SUPPLY NO. 14 x 1" ROUND HEAD WOOD SCREWS FOR THIS PURPOSE.

ASSEMBLY INSTRUCTIONS FOR STANDARD STEEL WORK BENCH

OPERATION No.1

- 1.) LAY THE BENCH TOP UPSIDE DOWN ON TWO STRIPS OF WOOD TO RAISE IT OFF THE FLOOR.
- 2.) BOLT AN ATTACHMENT CHANNEL TO EACH END OF THE BENCH TOP WITH THREE NO.3 BOLTS. REFER TO DETAILS NO.1 AND NO.2.

OPERATION No.2

- 1.) SET A BENCH LEG IN POSITION AT EACH END OF THE BENCH TOP AND BOLT IT TO THE RETURN FLANGES OF THE TOP WITH NO.2 BOLTS AS SHOWN IN DETAIL NO.1. BE SURE TO PLACE A LOCKWASHER UNDER THE HEAD OF EACH BOLT. DRAW NUTS UP TIGHT.
- 2.) ANCHOR TO WALL USING A SUITABLE ANCHOR. (SEE CHART ON OPPOSITE SIDE)

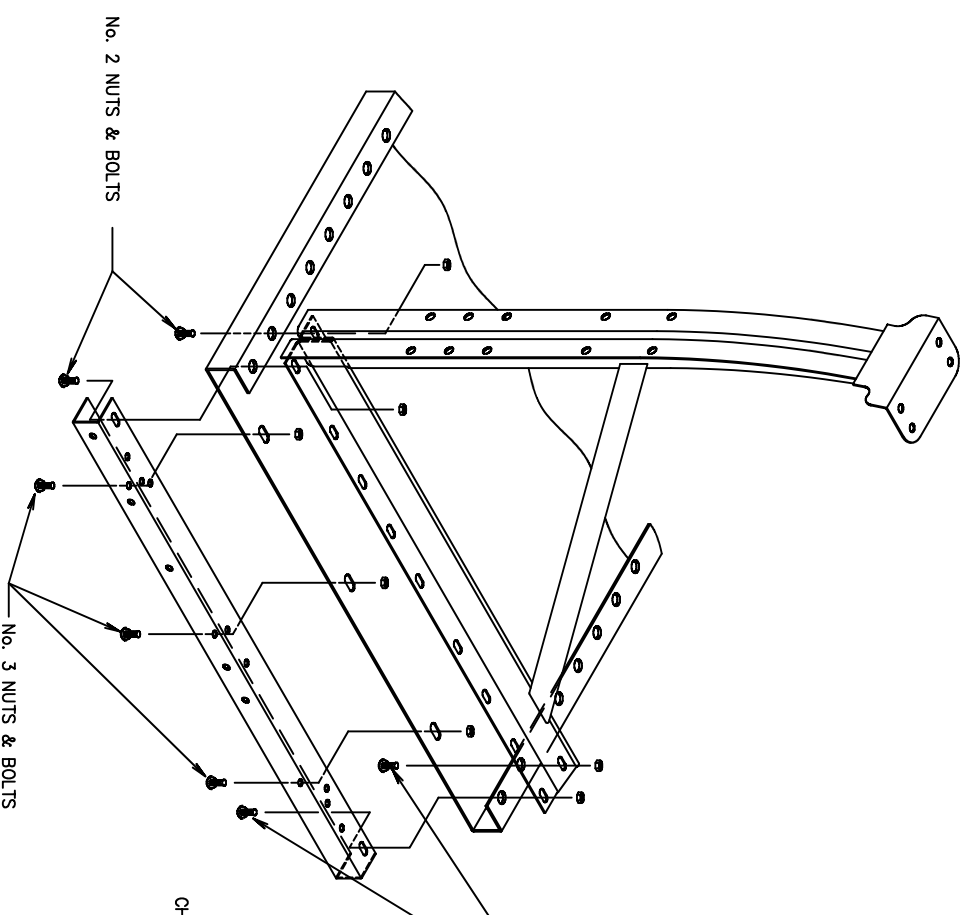
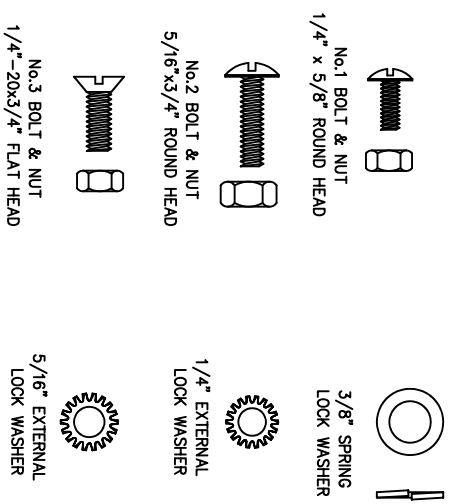
ACCESSORIES FOR WALL-MOUNTED BENCH LEGS

BENCH RISER

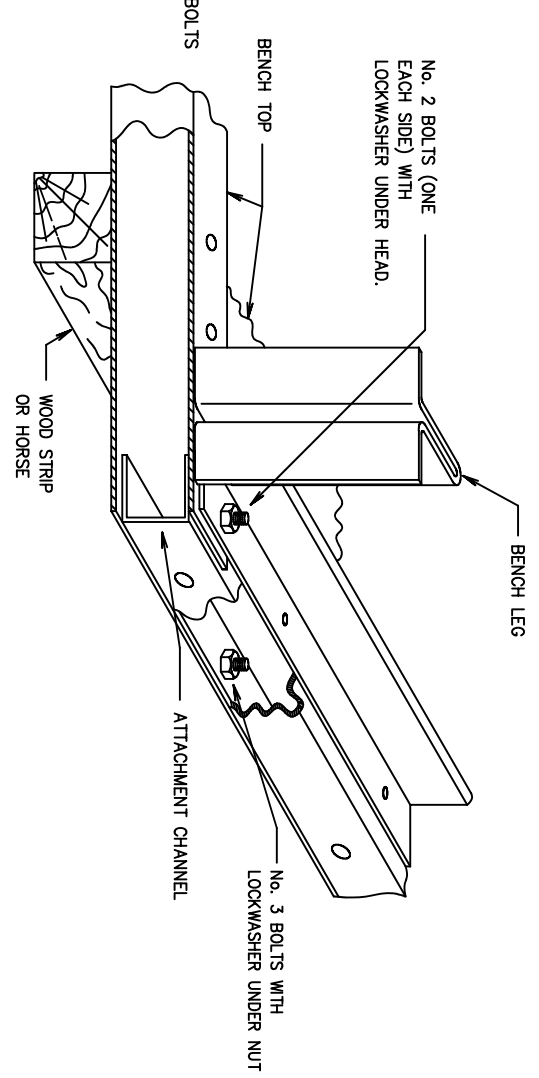
- 1.) BOLT A RISER SUPPORT TO THE BENCH TOP (AT THE REAR CORNERS) WITH ONE NO.1 BOLT. REMOVE THE NO.3 BOLT IF ONE HAS BEEN INSTALLED. REFER TO DETAIL NO.3.
- 2.) BOLT THE RISER SHELF TO THE RISER SHELF SUPPORTS. USING THREE NO.1 BOLTS AT EACH END.
- 3.) BOLT A RISER SUPPORT BRACE TO THE RISER SHELF AND THE RISER SHELF SUPPORT AT EACH END USING NO.1 BOLTS.

BENCH DRAWERS

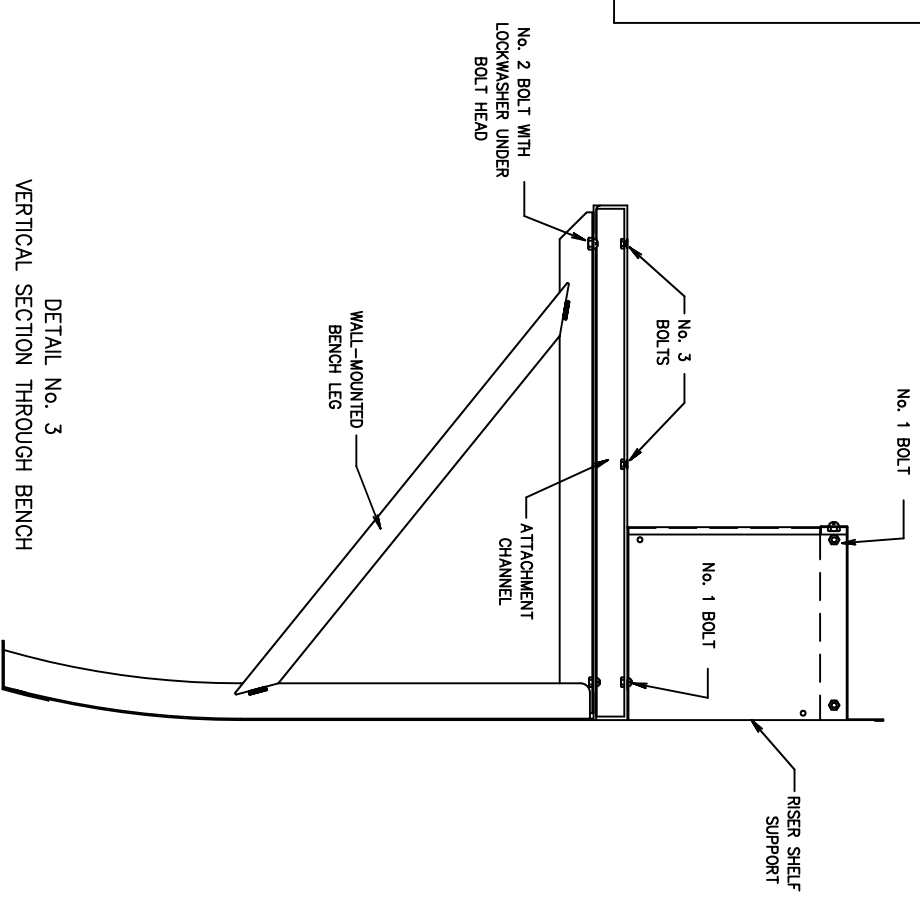
- 1.) FOLLOW ASSEMBLY INSTRUCTIONS NO. 10645-BA INCLUDED WITH EACH BENCH DRAWER PACKAGE.



DETAIL NO. 1

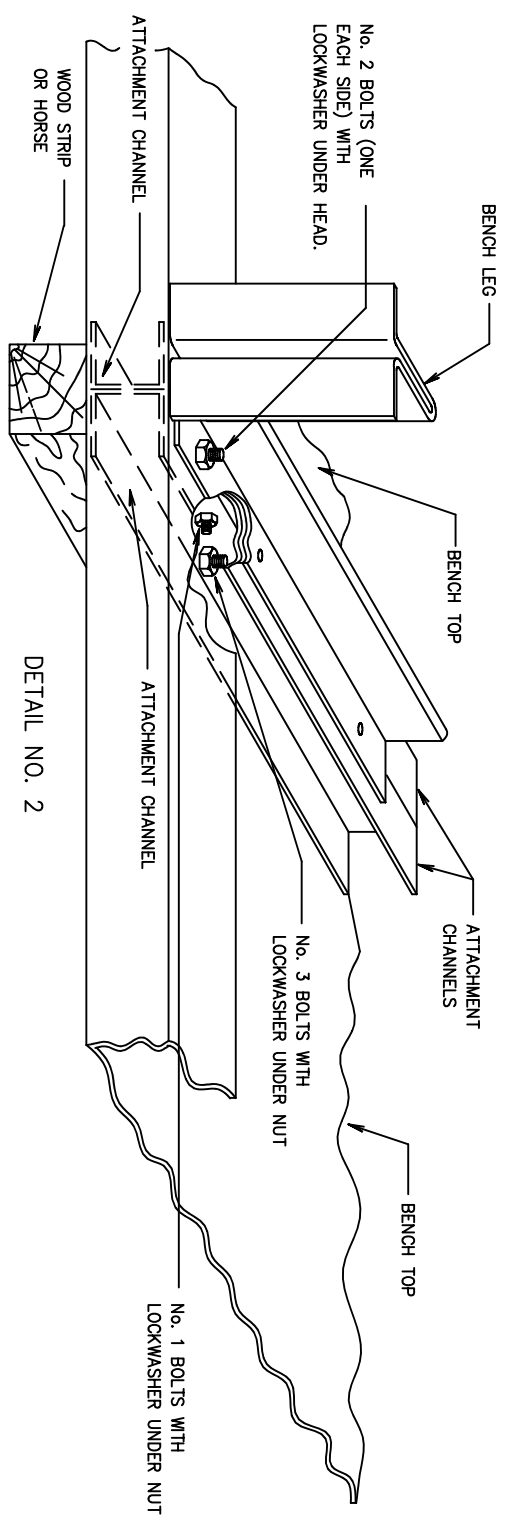


SHOWING ATTACHMENT OF BENCH LEG AND ATTACHMENT CHANNEL TO A STEEL BENCH TOP, WITH THE ATTACHMENT CHANNEL FLUSH WITH THE END OF THE STEEL BENCH TOP



DETAIL NO. 3

VERTICAL SECTION THROUGH BENCH



DETAIL NO. 2

SHOWING ATTACHMENT OF A BENCH LEG AND ATTACHMENT CHANNELS AT JOINT BETWEEN TWO STEEL BENCH TOPS

CONTINUED ON BACK
SIDE OF THIS SHEET