

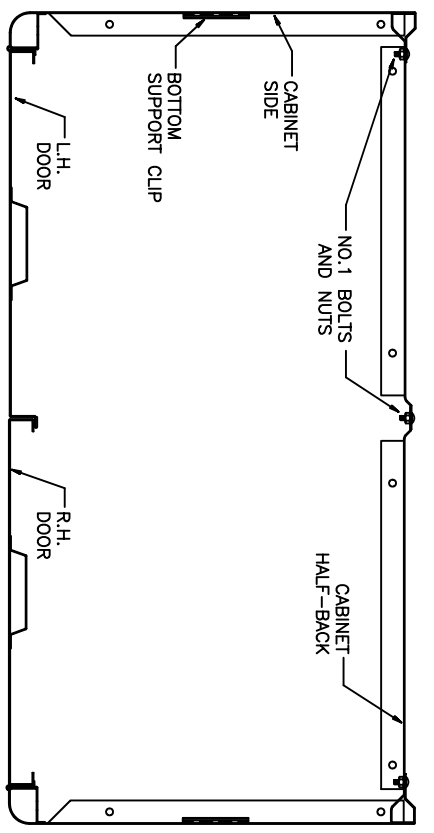
ASSEMBLY OPERATIONS

- 1.) LAY TWO HALF-BACKS ON SAW HORSES AND BOLT THEM TOGETHER WITH (8) NO.1 BOLTS AND NUTS (SEE PLAN SECTION)
- 2.) SET THE CABINET TOP INSIDE THE FLANGES ON THE BACK. BOLT THE TOP TO THE BACK FLANGES USING (4) NO. 1 BOLTS AND NUTS.
- 3.) BOLT A CABINET SIDE TO EACH EDGE OF THE BACK ASSEMBLY, AND TO THE CABINET TOP. USE (10) NO.1 BOLTS AND NUTS FOR EACH SIDE.
- 4.) ATTACH THE TOP CHANNEL BETWEEN THE FRONT EDGES OF THE SIDES USING (2) NO.3 THREAD CUTTING SCREWS AND LOCKWASHERS UNDER THE HEADS OF EACH SCREW. BE SURE THAT THE TOP CHANNEL IS FLUSH WITH THE SIDES. (SEE DETAIL "B").
- 5.) BOLT THE TOP TO THE INSIDE OF THE TOP CHANNEL USING (4) NO. 1 BOLTS.
- 6.) SIMILARLY ATTACH THE BOTTOM CHANNEL USING (4) NO.3 THREAD CUTTING SCREWS AND LOCKWASHERS UNDER THE HEADS OF EACH SCREW.
- 7.) INSERT THE CABINET BOTTOM INTO THE SUPPORT CLIPS WELDED TO THE BOTTOM OF EACH SIDE. BOLT THE CABINET BOTTOM TO THE BACK AND THE BOTTOM CHANNEL USING (8) NO.1 BOLTS AND NUTS.
- 8.) INSERT THE PLASTIC SNAP-IN GROMMET INTO THE RECTANGULAR HOLES IN THE TOP AND BOTTOM FLANGES OF THE RIGHT DOOR (SEE DETAIL "D").
- 9.) BOLT THE DOORS TO THE HINGES ON EACH CABINET SIDE. USE (2) NO.2 CARRIAGE BOLTS. PLACE A LOCKWASHER UNDER EACH NUT. (SEE DETAIL "A").
- 10.) INSTALL THE LOCKING MECHANISM INTO THE CABINET. ATTACH (4) FELT PADS TO THE LOCKBAR. THE FELT PADS ARE TO BE CENTERED VERTICALLY ON EACH LOCK ROD. THE FELT PADS ARE ADHESIVE BACKED FOR INSTALLATION. (SEE DETAIL "C").
- 11.) COMPLETE THE LOCKING MECHANISM INSTALLATION BY ATTACHING THE CABINET HANDLE TO THE LOCKBAR ASSEMBLY (SEE DETAIL "C").
- 12.) SET THE CABINET UPRIGHT. INSTALL THE SHELVES BY INSERTING THE REAR CORNERS OF THE SHELF INTO THE SHELF ADJUSTMENT SLOTS. SUPPORT THE FRONT CORNERS OF THE SHELF ON THE SHELF BRACKETS INSERTED IN THE ADJUSTMENT SLOTS ON THE CABINET SIDES.
- 13.) SET THE CABINET IN ITS PERMANENT LOCATION AND LEVEL IT BY PLACING SHIMS UNDER THE CORNERS WHERE REQUIRED. DOORS SHOULD OPERATE FREELY.

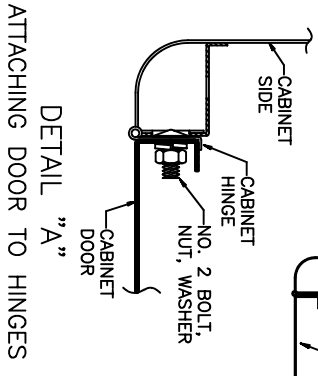
NOTE:
THESE INSTRUCTIONS ARE TO BE FOLLOWED IN PART FOR ALL CABINETS. REFER TO SPECIFIC INSTRUCTIONS ON THE REVERSE SIDE OF THIS SHEET.

HARDWARE:

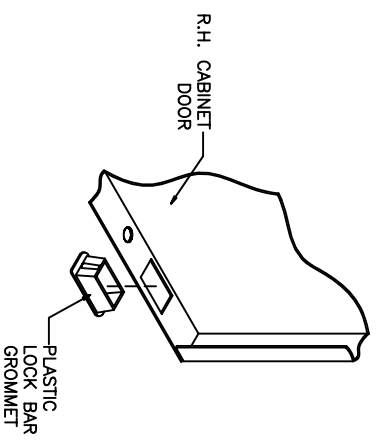
- No.1 BOLT & NUT #10x3/8" ROUND HEAD
- No.2 BOLT & NUT 1/4" x 9/16" w/ LOCKWASHER
- No.3 SCREW 1/4-20 x 1/2" SLOTTED HEX HEAD THREAD CUTTING SCREW w/ LOCKWASHER
- No.4 SCREW 1/4-20 x 1/2" SLOTTED TRUSS HEAD MACHINE SCREW w/ LOCKWASHER
- SHELF BRACKET
- SPRING CLIP
- LOCK BAR ASSEMBLY (including LOCK WASHER, SPRING CLIP, LOCK BARREL, LOCK, CAM, and THIN WASHER)



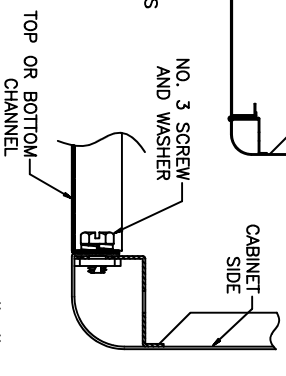
PLAN SECTION THRU ALL CABINETS
SHOWS ASSEMBLY OF BACK, SIDES, BOTTOM AND DOORS



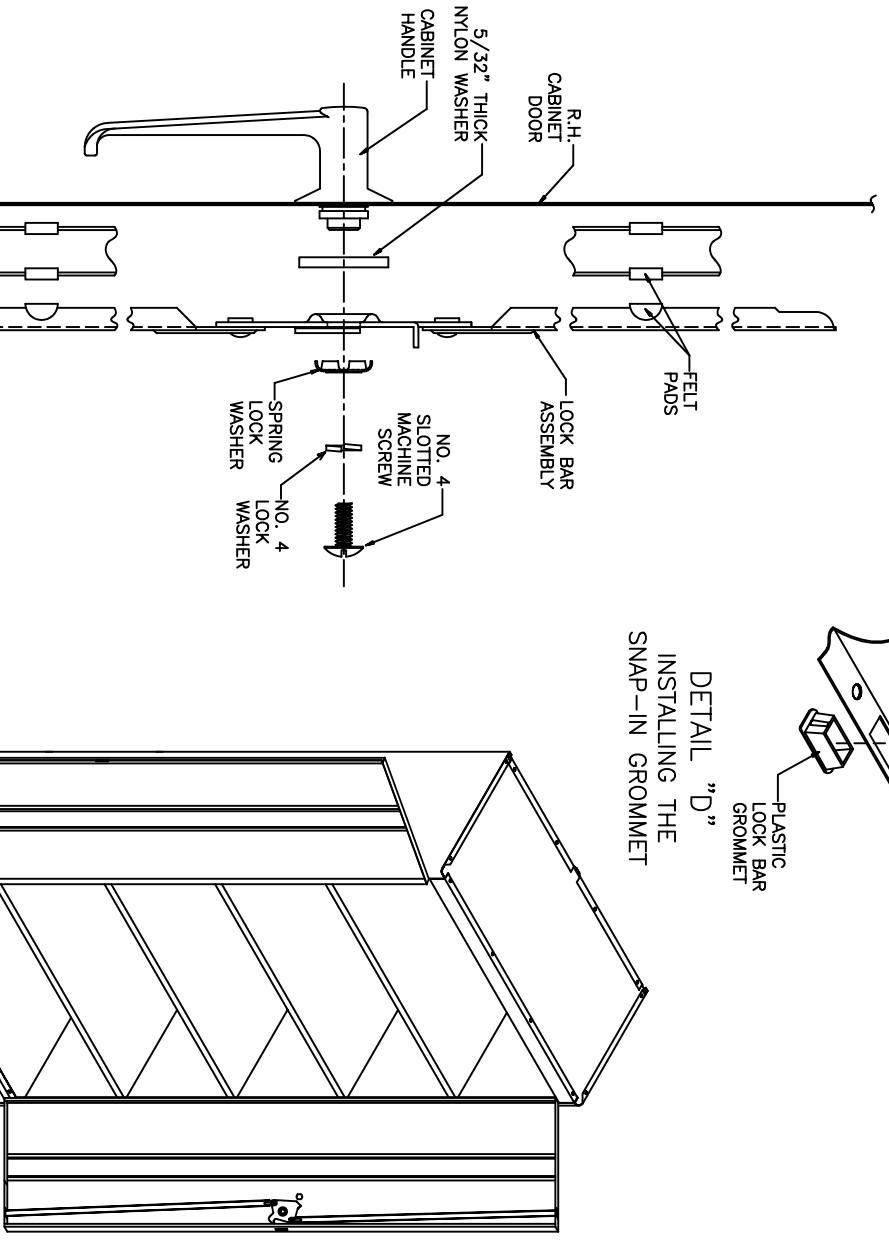
DETAIL "A"
ATTACHING DOOR TO HINGES



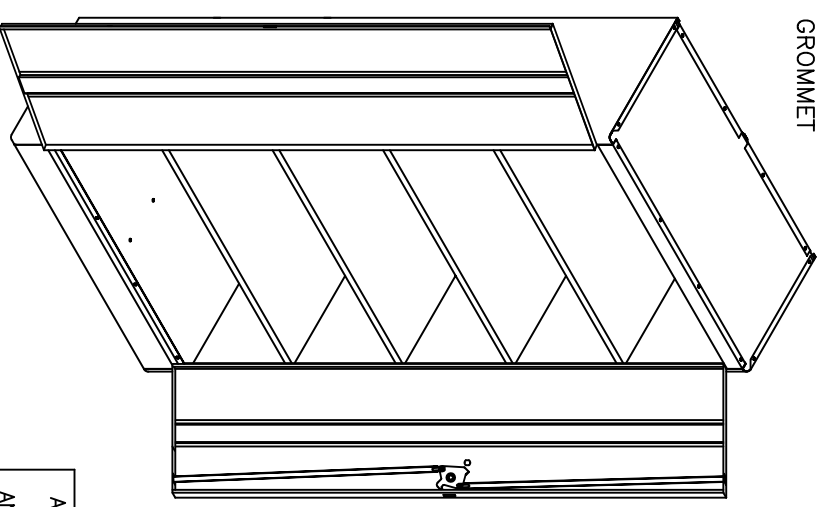
DETAIL "D"
INSTALLING THE SNAP-IN GROMMET



DETAIL "B"
ATTACHING TOP & BOTTOM CHANNELS



DETAIL "C"
INSTALLING THE LOCKING MECHANISM



COMPLETED ASSEMBLY

CONTINUED ON BACK SIDE OF THIS SHEET

ASSEMBLY INSTRUCTIONS FOR STORAGE AND WARDROBE CABINETS

LYON METAL PRODUCTS
P.O. BOX 671
AURORA, ILL. 60507

REVISIONS: ENG E-11278-01
ENG E-07897-01

8874-AA

