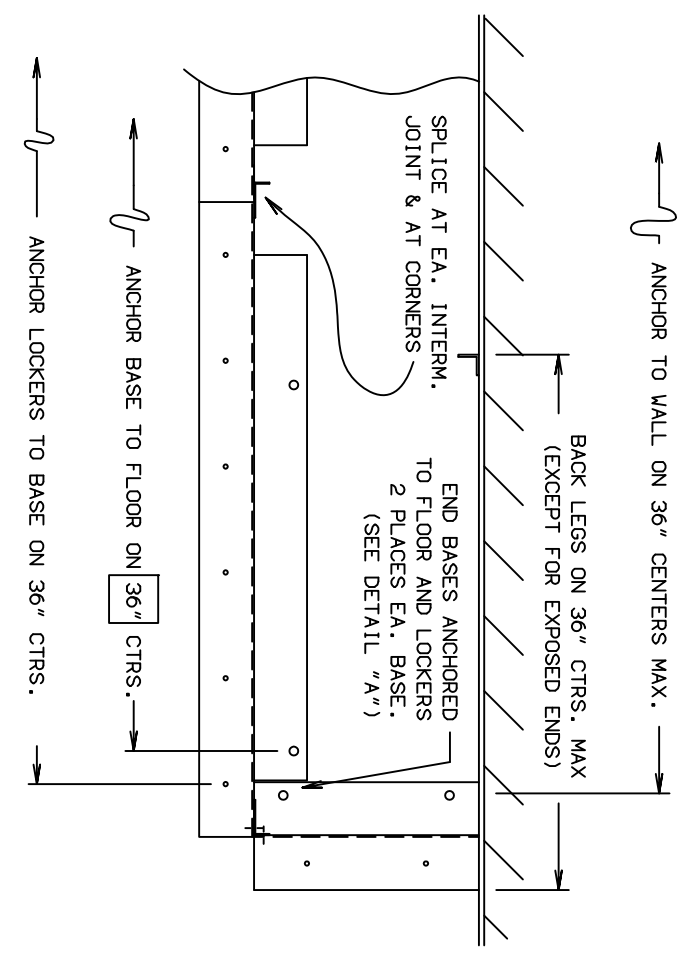
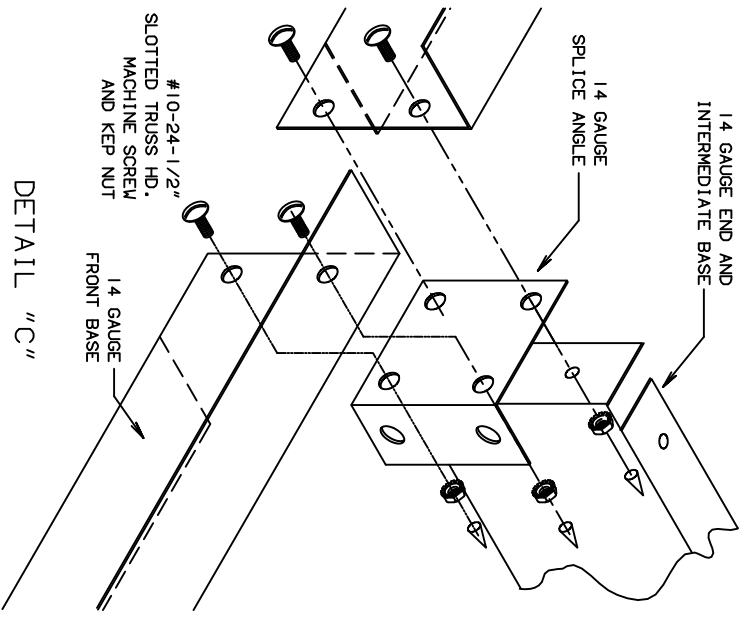
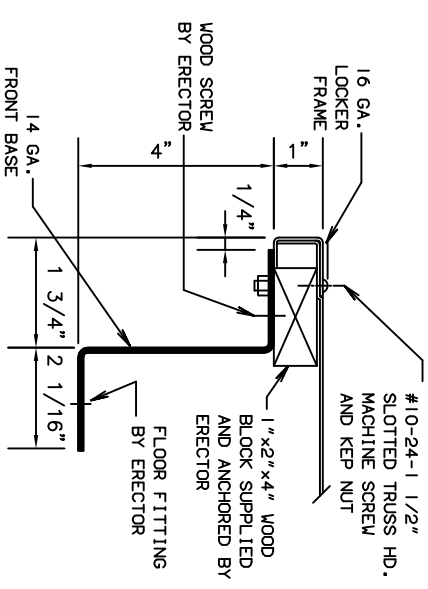
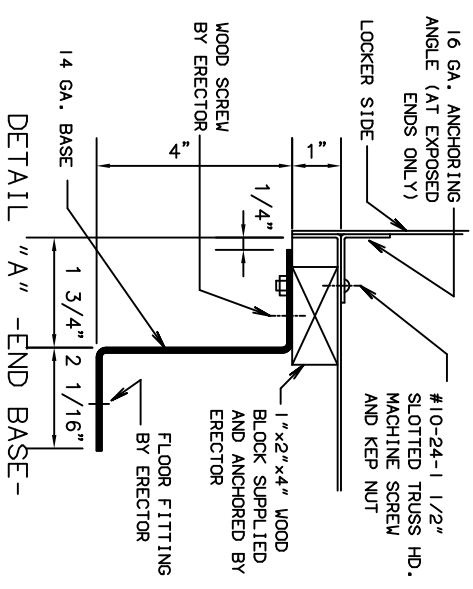
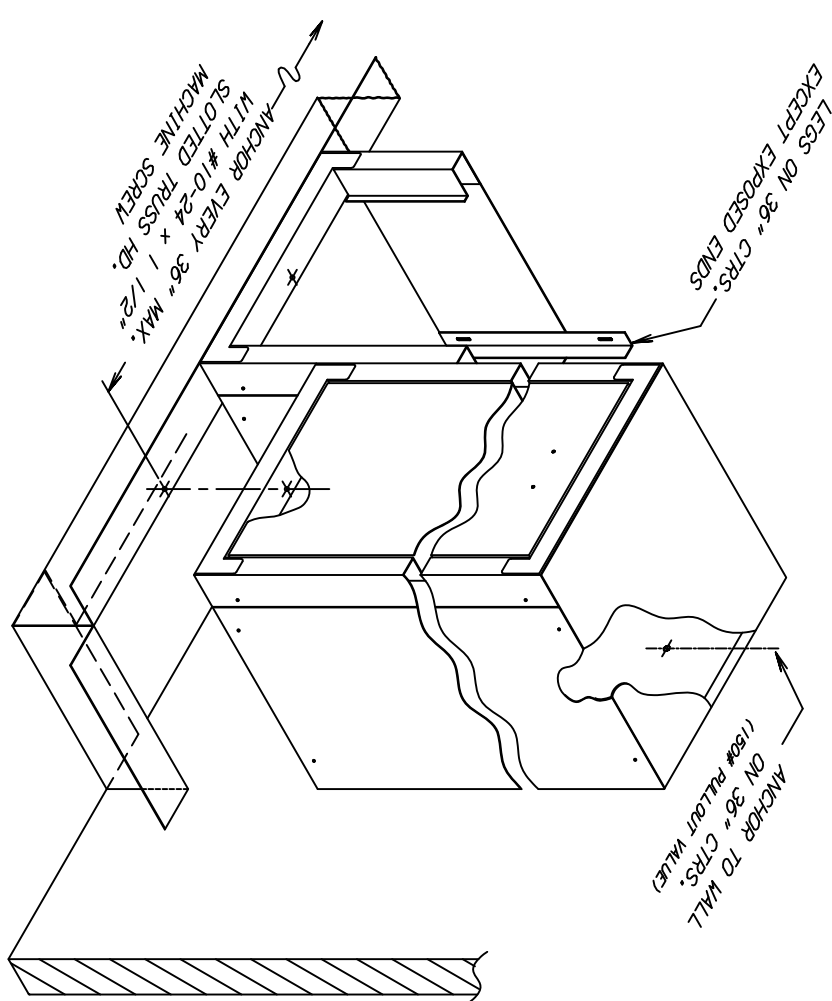


GENERAL DETAILS

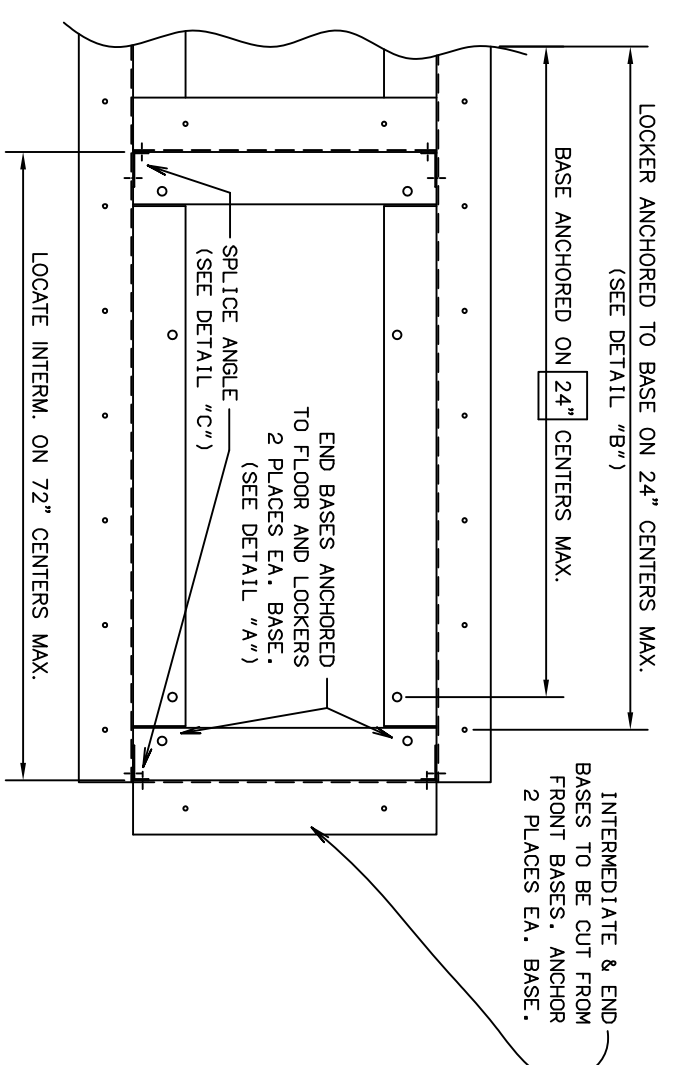
FRONT BASES FURNISHED 72" LONG
ERECTOR TO CUT AS REQUIRED
END BASES AT EXPOSED ENDS TO BE CUT
FROM 72" FRONT BASES DRILL IF NECESSARY
AND ANCHOR TO FLOOR MIN. 2 PLACES.
WARNING
WOOD SCREWS BY ERECTOR MUST HAVE A MIN
PULLOUT VALUE OF 120#, AND FLOOR ANCHORS
MUST HAVE A PULLOUT VALUE OF 190# MIN.



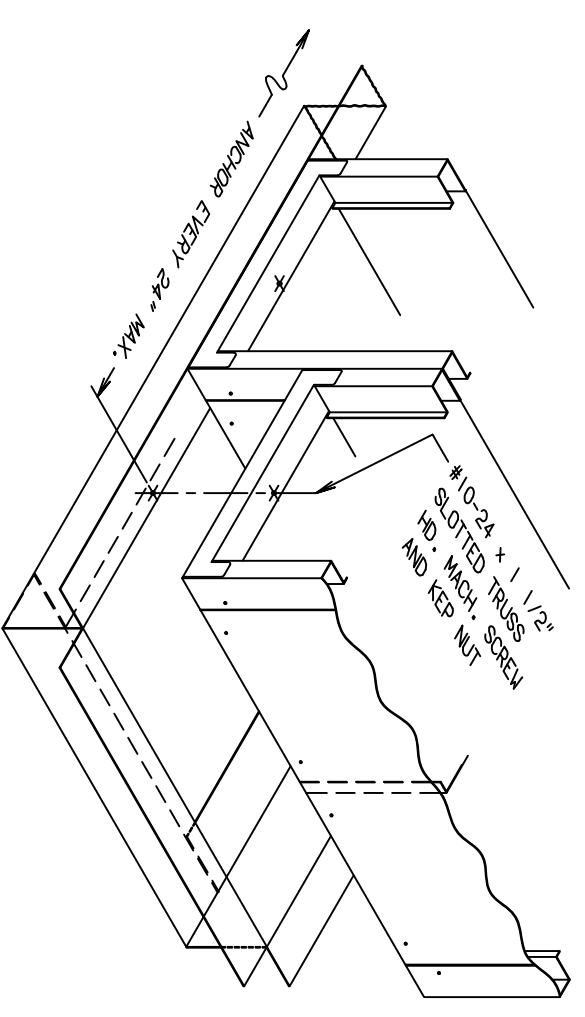
PARTIAL PLAN VIEW OF "Z" BASE



"Z" BASE ASSEMBLY
FOR SINGLE ROW LOCKERS



PARTIAL PLAN VIEW OF "Z" BASE



"Z" BASE ASSEMBLY
FOR DOUBLE ROW LOCKERS

ASSEMBLY INSTRUCTIONS

FOR Z-BASE

LYON
LYON METAL PRODUCTS, INC.
P.O. BOX 671
AURORA, IL 60507

9109-AA 1
REDESIGNED 11-12-91
EON# E-031096-01
ECN# E-090124-1