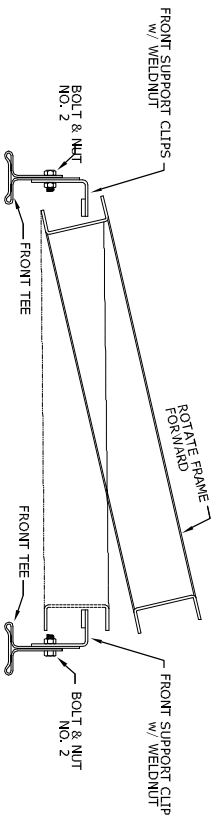


STEP #3 FRONT FRAME ASSEMBLY (CONT.)

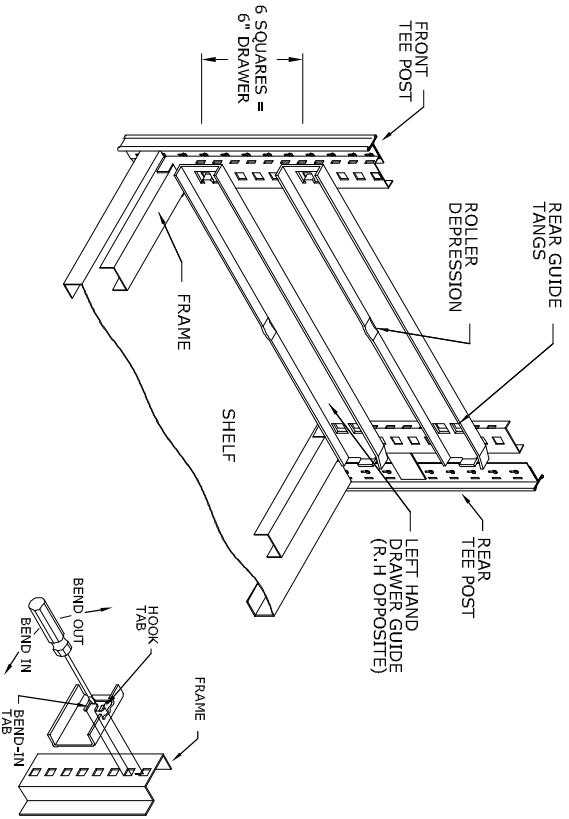
- 1) POSITION THE FRONT FRAME INTO SHELVING BY LOCATING THE FRAME'S VERTICAL CHANNEL OVER THE PRE-ASSEMBLED SUPPORT CLIPS ON THE LEFT.



- 2) ROTATE RIGHT SIDE OF FRAME FORWARD AND INSTALL SUPPORT CLIPS TO THE TEE POST w/ BOLT NO. 2. SNUG, DO NOT TIGHTEN.
- 3) ANCHOR FRONT FRAME TO THE SUPPORT CLIPS ON BOTH SIDES WITH BOLT NO. 1.
- 4) ALIGN FRAME AND TIGHTEN ALL FASTENERS.

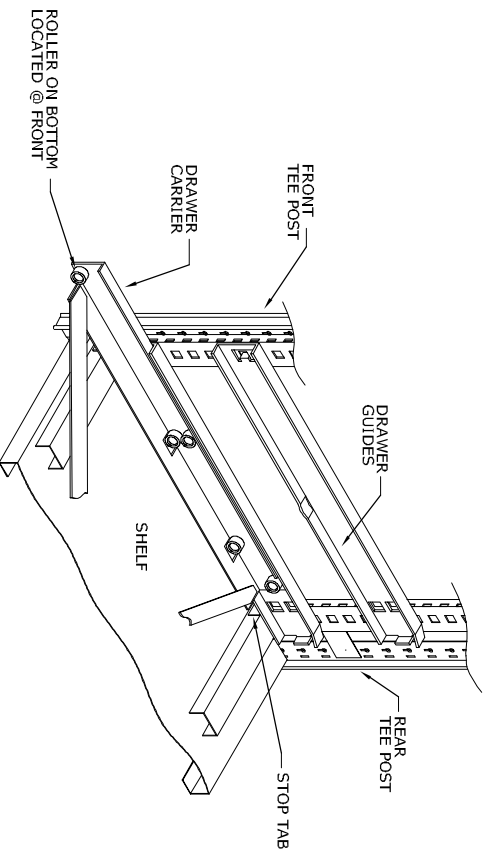
STEP #4 DRAWER GUIDE ASSEMBLY

- 1) INSERT BOTH LEFT HAND AND RIGHT HAND DRAWER GUIDES @ THE BOTTOM MOST LOCATION. (ROLLER DEPRESSION LOCATION IDENTIFIES HANDING, THE REAR GUIDE TANGS FIT IN THE BOTTOM FRAME SLOTS, AND THE FRONT TANG FITS IN THE SECOND SLOT FROM THE BOTTOM.)
- 2) DRAWER GUIDE SPACING IS DETERMINED BY THE NOMINAL HEIGHT OF THE DRAWER. COUNT ONE SQUARE HOLE FOR EACH INCH OF NOMINAL HEIGHT OF THE DRAWER. (REFER TO CHARTS IN GENERAL INSTRUCTIONS FOR NOMINAL HEIGHTS).
- 3) TO LOCK GUIDES IN PLACE, INSERT SCREWDRIVER AND BEND THE TAB AS SHOWN BELOW.



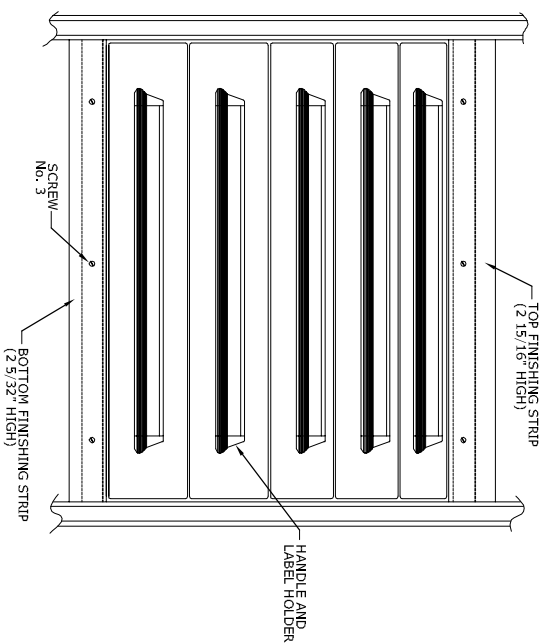
STEP #5 DRAWER CARRIER ASSEMBLY

- 1) INSERT THE DRAWER CARRIERS INTO THE DRAWER GUIDES NOTING ROLLER LOCATION (BELOW) AND LIFT UP AT THE FRONT TO CLEAR THE TABS.
- 2) ROTATE STOP TABS @ BACK ON BOTH SIDES TO LOCK CARRIERS IN THEIR LOCATION



STEP #6 FINISHING STRIP AND DRAWER ASSEMBLY

- 1) ATTACH TOP & BOTTOM FINISHING STRIPS TO THE SHELVES USING SCREW NO. 2.
- 2) INSERT DRAWERS INTO CARRIERS LIFTING UP @ FRONT TO CLEAR THE STOPS.



LYON

P.O. Box 671
AURORA, IL 60507-0671
PHONE: 630-992-8941
FAX: 800-867-8681

NOTICE: THIS IS A CONFIDENTIAL DISCLOSED LOANED BY LYON WORKSPACE FOR REFERENCE PURPOSES ONLY

DATE	DRAWN BY	CHECKED BY
08-15-12	JR	DWV

DESCRIPTION

INSTALLATION
36W DRAWERS IN SHELVING
MDC

SHEET	DRAWING NUMBER	REV
2	9113-MSSCA	1

GENERAL INSTRUCTIONS

- BEFORE INSTALLING MODULAR DRAWER UNITS, IT MUST BE VERIFIED THAT THE TEE POSTS ARE PLUMB AND THE SHELVES ARE LEVEL. THE SHELVING UNIT MUST ALSO BE PROPERLY ANCHORED AS DESCRIBED IN THE INSTALLATION SHEET PROVIDED WITH THE SHELVING UNIT. IF NEEDED, CONTACT LYON WORKSPACE PRODUCTS CUSTOMER SERVICE FOR PROPER ANCHORING METHODS. DRAWERS WILL NOT OPERATE CORRECTLY IF THE ABOVE CRITERIA IS NOT MET.
- EACH UNIT MUST HAVE A SHELF ABOVE AND BELOW THE UNIT. TWO UNITS IN ONE SHELVING SECTION MUST BE SEPARATED BY A SHELF. ONE 18" HIGH UNIT REQUIRES SPACING OF 22-1/2", ONE 32" HIGH UNIT REQUIRES SHELF SPACING OF 37-1/2", AND ONE 36" HIGH UNIT REQUIRES SHELF SPACING OF 40-1/2". THIS SPACE IS MEASURED FROM THE TOP OF ONE SHELF TO THE TOP OF THE NEXT SHELF.
- MODULAR DRAWERS ARE AVAILABLE IN THE FOLLOWING SIZES:

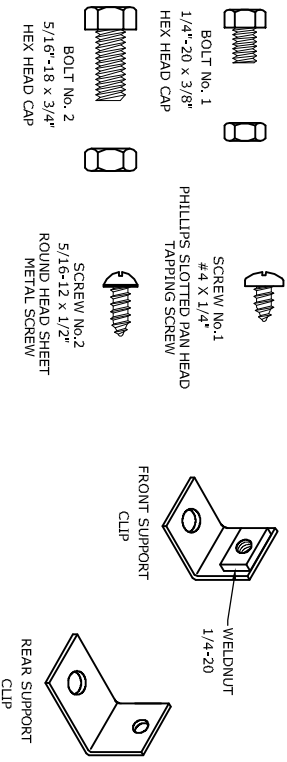
18" DEEP SHELVING

PART #	NOMINAL HEIGHT	FRONT HEIGHT	USABLE HEIGHT
8913	3"	2-7/8"	2"
8914	4"	3-7/8"	2-1/2"
8915	5"	4-7/8"	3-1/2"
8916	6"	5-7/8"	4-1/2"
8917	7"	6-7/8"	5-1/2"

24" DEEP SHELVING

PART #	NOMINAL HEIGHT	FRONT HEIGHT	USABLE HEIGHT
8933	3"	2-7/8"	2"
8934	4"	3-7/8"	2-1/2"
8935	5"	4-7/8"	3-1/2"
8936	6"	5-7/8"	4-1/2"
8937	7"	6-7/8"	5-1/2"

ANY COMBINATION OF DRAWER HEIGHTS TOTALING 18 FOR THE 18" HIGH UNIT, 32 FOR THE 32" HIGH UNIT, OR 36 FOR THE 36" HIGH UNIT MAY BE USED.

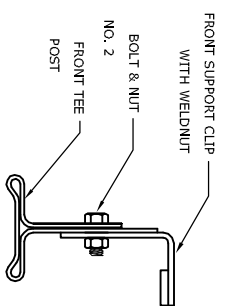
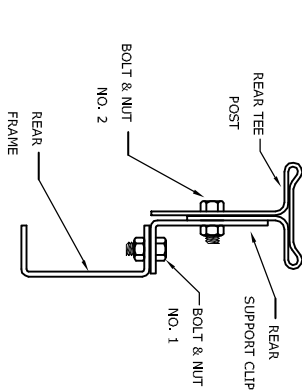
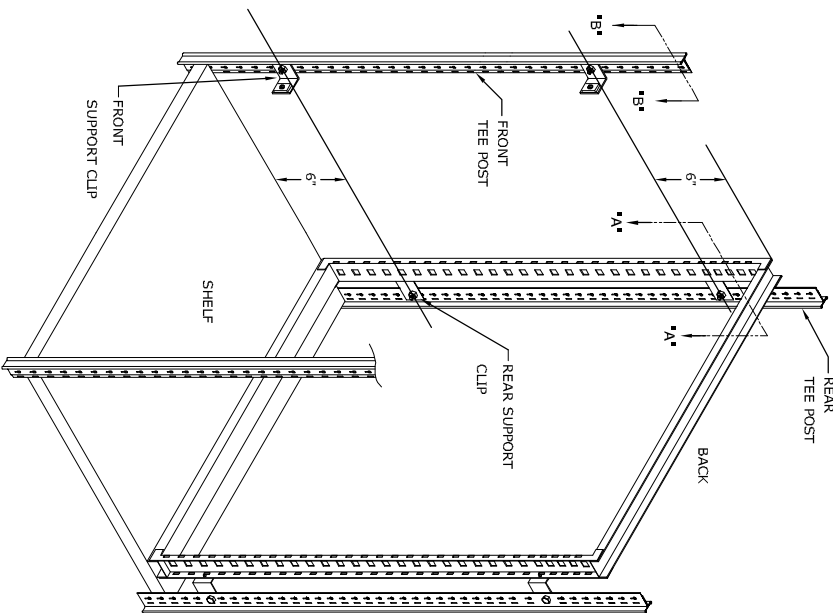


SUPPLIED FASTENERS

ASSEMBLY OPERATIONS

STEP #1 REAR FRAME ASSEMBLY

- PLACE A FRAME AT THE REAR POSITION IN SHELVING. BOLT THE SUPPORT CLIPS TO THE FRAME WITH BOLT NO. 1 AND TO THE TEE POSTS WITH BOLT NO. 2 (REFER TO SECTION "A"- "A").
 - 18" HIGH UNIT = (2) SUPPORT CLIPS ON EACH TEE @ APPROXIMATELY 6" FROM THE TOP AND BOTTOM OF THE FRAME.
 - 32" OR 36" HIGH UNITS = (3) SUPPORT CLIPS ON EACH TEE @ APPROXIMATELY 6" FROM THE TOP AND BOTTOM OF THE FRAME WITH AN ADDITIONAL SUPPORT CLIP IN THE CENTER.



STEP #2 FRONT FRAME ASSEMBLY

- ATTACH THE FRONT CLIPS (CLIPS W/ WELD NUTS) TO ONLY THE LEFT SIDE OF THE TEE POST MATCHING THE SAME VERTICAL LOCATIONS AS THE REAR CLIPS WITH BOLT AND NUT NO. 2. (REFER TO SECTION "B"- "B"). SMUG, DO NOT TIGHTEN.

LYON

P.O. Box 671
AURORA, IL 60507-0671
PHONE: 630-992-8841
FAX: 800-867-4681

NOTICE: THIS IS A CONFIDENTIAL DISCLOSURE LOANED BY LYON WORKSPACE FOR REFERENCE PURPOSES ONLY

DATE	DRAWN BY	CHECKED BY
08-15-12	JR	DWV

DESCRIPTION

INSTALLATION
36W DRAWERS IN SHELVING
MDC

SHEET	DRAWING NUMBER	REV
1	9113-MSSCA	1