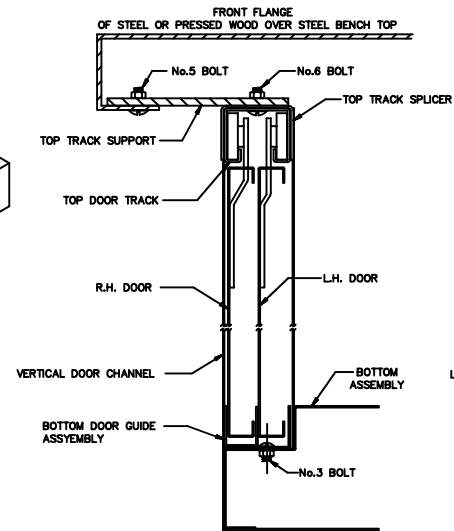


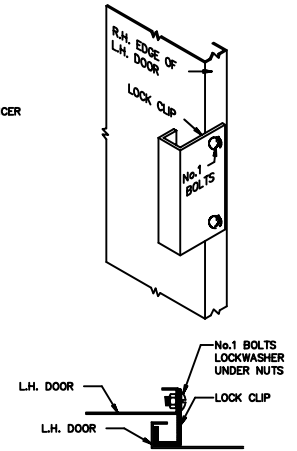
DETAIL "A"

SHOWING ASSEMBLY OF TOP DOOR TRACK AND ATTACHMENT TO A STEEL OR PRESSED WOOD OVER STEEL BENCH TOP.



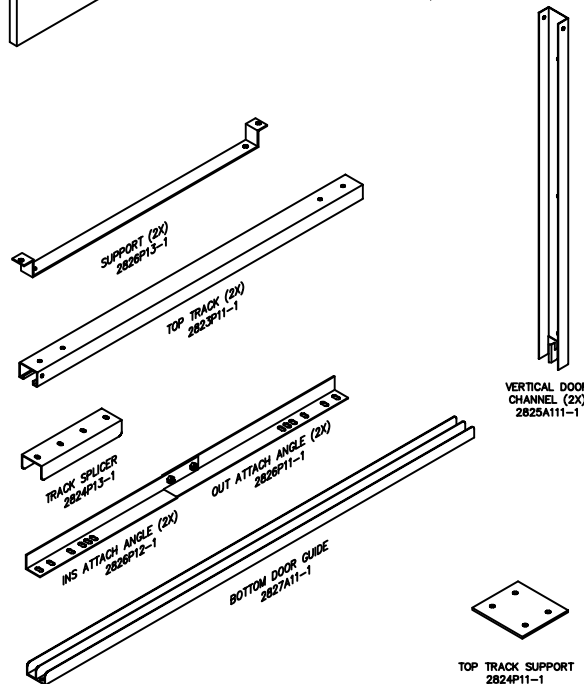
DETAIL "B"

VERTICAL SECTION THROUGH DOORS SHOWING THEIR ATTACHMENT TO BENCH



DETAIL "C"

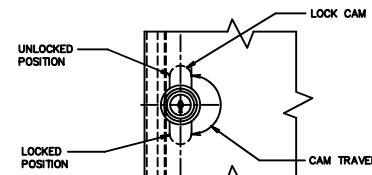
PLAN SECTION THROUGH DOORS, IN CLOSED POSITION, SHOWING APPLICATION OF LOCK CLIP



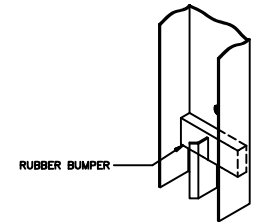
GENERAL INSTRUCTIONS

1. THESE INSTRUCTIONS COVER THE INSTALLATION OF No.2860 AND No.2861 SLIDING DOORS TO CABINET BENCHES. FOR ASSEMBLY OF THE BENCH, SEE INSTRUCTION No.9207-AA PACKED WITH THE BENCH.
2. USE LOCKWASHERS UNDER ALL NUTS.
3. WHEN DOORS ARE INSTALLED ON A BENCH WITH A WOOD TOP, THE TRACK SPLICER AND THE TRACK SUPPORT ARE NOT USED. THE TWO PIECES OF TRACK ARE ATTACHED DIRECTLY TO THE WOOD TOP WITH No.14 WOOD SCREWS (NOT FURNISHED BY LYON.)

BEFORE ATTEMPTING TO DRIVE THE WOOD SCREWS INTO THE WOOD TOP, DRILL A 5/32" PILOT HOLE APPROXIMATELY 1" IN DEPTH AND LUBRICATE THE THREADS.



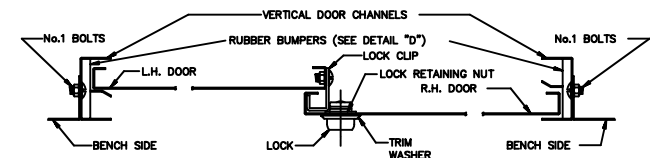
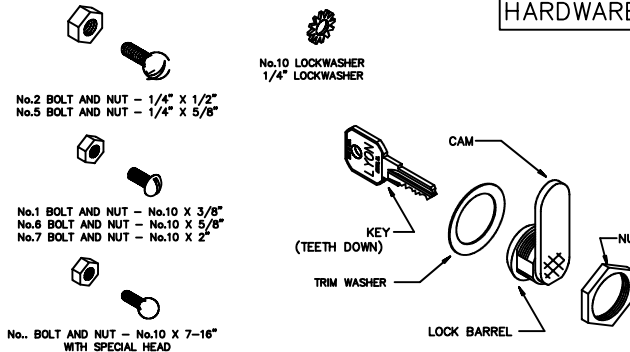
DETAIL "F"



DETAIL "D"

SHOWING RUBBER BUMPER IN BOTTOM END OF EACH VERTICAL DOOR CHANNEL

HARDWARE



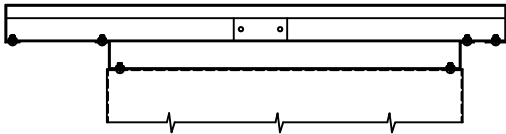
DETAIL "E"

HORIZONTAL SECTION THROUGH DOORS INSTALLED ON A BENCH SHOWING RELATIVE POSITION OF PARTS. USE LOCKWASHERS UNDER ALL NUTS.

ASSEMBLY INSTRUCTIONS  
SLIDING DOORS FOR  
CABINET TYPE BENCHES

DRAWN BY: MATT	DATE: 2-13-68
REVISED	DATE
REDRAWN	2-13-68

9208-AA  
SHEET 1 OF 2



SECTION THROUGH BENCH TOP, FRONT TO BACK, SHOWING ATTACHMENT OF BENCH DRAWER TO A STEEL TOP BENCH EQUIPPED WITH DOOR.



SECTION THROUGH BENCH TOP, SIDE TO SIDE, SHOWING ATTACHMENT OF A BENCH DRAWER TO A STEEL TOP BENCH EQUIPPED WITH DOORS.

TO INSTALL A BENCH DRAWER UNDER A STEEL BENCH TOP THAT IS EQUIPPED WITH SLIDING DOOR:

1. BOLT TWO ATTACHMENT ANGLE ASSEMBLIES TO THE FLANGES OF THE BENCH TOP, SPACING THEM ON 14" CENTERS FOR A NO. 2788 DRAWER AND ON 20" CENTERS FOR A NO. 2789 DRAWER.
2. BOLT A BENCH DRAWER SUPPORT TO EACH ATTACHMENT ANGLE ASSEMBLY AS INDICATED.
3. ATTACH THE LOCK CLIP AND DRAWER STOP ASSEMBLY TO THE BENCH DRAWER CASE PER INSTRUCTION NO 10645-BA PACKED WITH THE BENCH DRAWER.
4. BOLT THE BENCH CASE TO THE BENCH DRAWER SUPPORTS AS SHOWN.



SECTION THROUGH BENCH TOP, FRONT TO BACK, SHOWING ATTACHMENT OF BENCH DRAWER TO A STEEL TOP BENCH EQUIPPED WITH DOOR.



SECTION THROUGH BENCH TOP, SIDE TO SIDE, SHOWING ATTACHMENT OF A BENCH DRAWER TO A STEEL TOP BENCH EQUIPPED WITH DOORS.

TO INSTALL A BENCH DRAWER UNDER A WOOD BENCH TOP THAT IS EQUIPPED WITH SLIDING DOORS:

1. ATTACH TWO BENCH DRAWER SUPPORTS DIRECTLY TO THE BENCH TOP, USING NO. 14 X 1" WOOD SCREWS WITH A 3/16" CUT WASHER UNDER THE HEAD. (THE WOOD SCREWS AND CUT WASHERS ARE NOT FINISHED BY LYON.)

THE BENCH DRAWER SUPPORTS ARE TO BE SPACED ON 14" CENTERS FOR A NO 2788 DRAWER AND ON 20" CENTERS FOR A NO 2789 DRAWER.

2. ATTACH THE BENCH DRAWER TO THE BENCH DRAWER SUPPORTS AS DESCRIBED IN 3 AND 4 STEEL TOPS ABOVE.