

GENERAL INSTRUCTIONS

- BEFORE INSTALLING MODULAR DRAWER UNITS, IT MUST BE VERIFIED THAT THE UPRIGHTS ARE PLUMB AND THE SHELVES ARE LEVEL. THE SHELVING UNIT MUST ALSO BE PROPERLY ANCHORED AS DESCRIBED IN THE INSTALLATION SHEET PROVIDED WITH THE SHELVING UNIT. IF NEED BE, CONTACT LYON METAL PRODUCTS CUSTOMER SERVICE FOR PROPER ANCHORING METHODS. DRAWERS WILL NOT OPERATE CORRECTLY IF THE ABOVE CRITERIA IS NOT MET.
- EACH UNIT MUST HAVE A SHELF ABOVE AND BELOW THE UNIT. TWO UNITS IN ONE SHELVING SECTION MUST BE SEPARATED BY A SHELF. ONE 18" UNIT (25 segments) REQUIRES A SPACE OF 22 1/2", AND ONE 36" UNIT (48 segments) REQUIRES A SPACE OF 40 1/2". THIS SPACE IS MEASURED FROM TOP OF SHELF TO TOP OF SHELF.
- MODULAR DRAWERS ARE AVAILABLE IN THE FOLLOWING SIZES:

PART #	FRONT HEIGHT	USEABLE HEIGHT	SEGMENTS
890040	3 1/16"	2 1/4"	4
890050	3 7/8"	3"	5
890060	4 5/16"	3 7/8"	6
890070	5 7/16"	4 5/8"	7
890080	6 3/16"	5 3/8"	8
890090	7"	6 1/4"	9
890100	7 3/4"	7"	10
890110	8 9/16"	7 3/4"	11
890120	9 3/8"	8 1/2"	12
890130	10 1/4"	9 3/8"	13
890140	10 7/8"	10 1/8"	14
890150	11 3/4"	10 7/8"	15
890160	12 1/2"	11 3/4"	16
890170	13 5/16"	12 1/2"	17
890180	14 1/16"	13 1/4"	18

ANY COMBINATION OF DRAWER SEGMENTS TOTALING 25 FOR THE 18" UNIT OR 48 FOR THE 36" UNIT MAY BE USED.

ASSEMBLY OPERATIONS

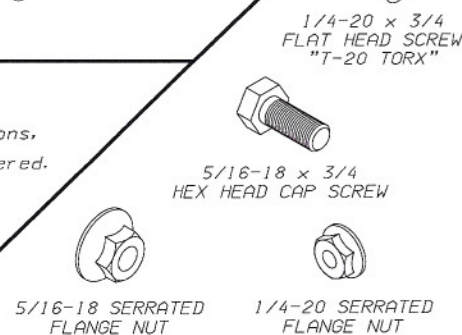
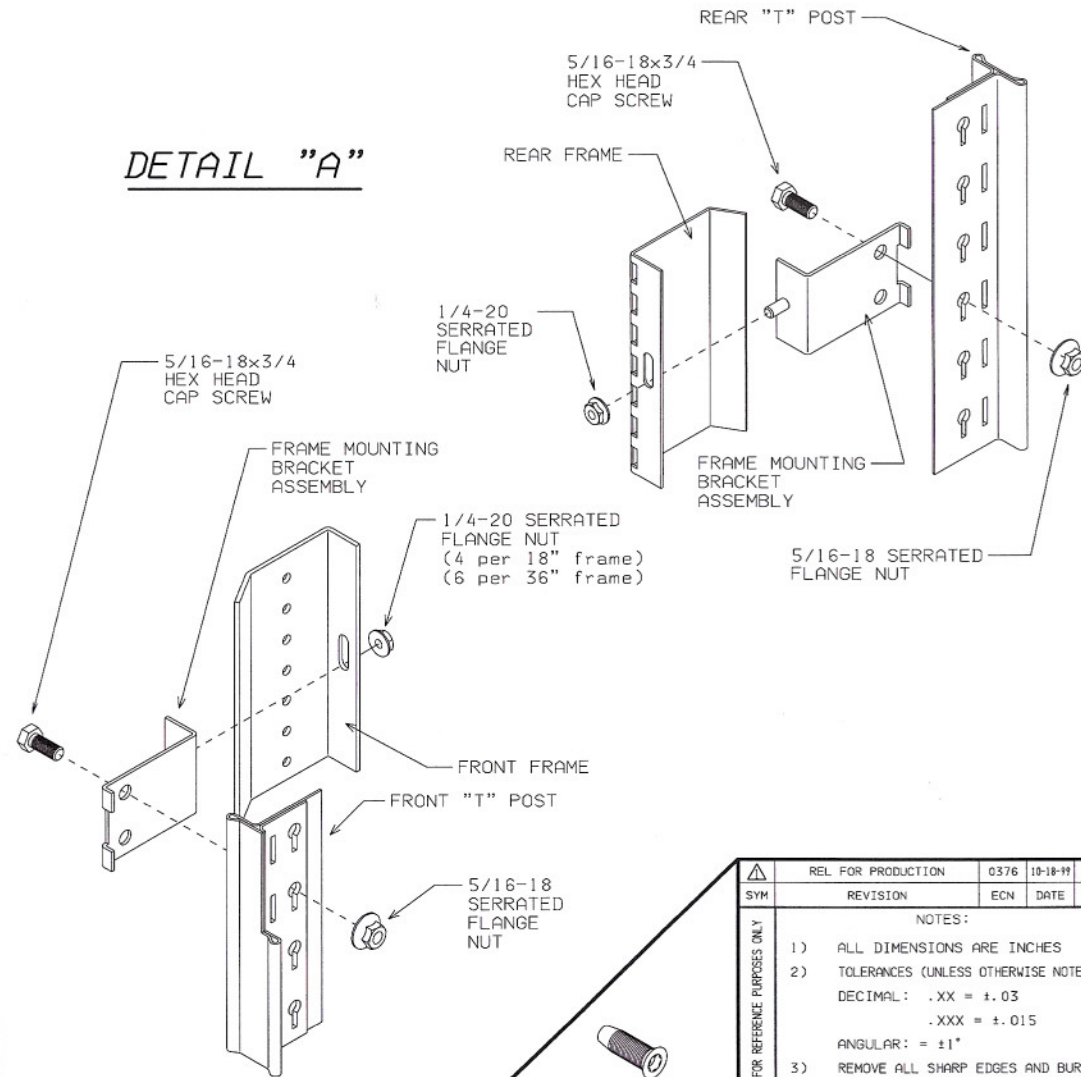
OPERATION NUMBER 1

- AFTER READING THE GENERAL INSTRUCTIONS ABOVE AND WHEN ALL SHELVES ARE INSTALLED, ASSEMBLE FRAME MOUNTING BRACKET ASSEMBLIES TO SHELVING UPRIGHTS AND TIGHTEN FASTENERS. SEE DETAIL "A"
- INSTALL FRAME ASSEMBLIES TO FRAME MOUNTING BRACKETS. SEE DETAIL B. LEAVE FASTENERS LOOSE.

NOTE:

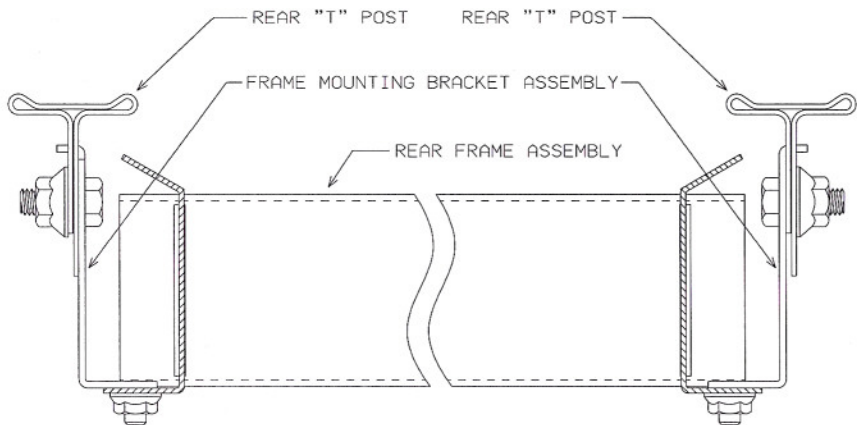
For add-on units with matching frame locations, frame mounting bracket assemblies are staggered.

DETAIL "A"

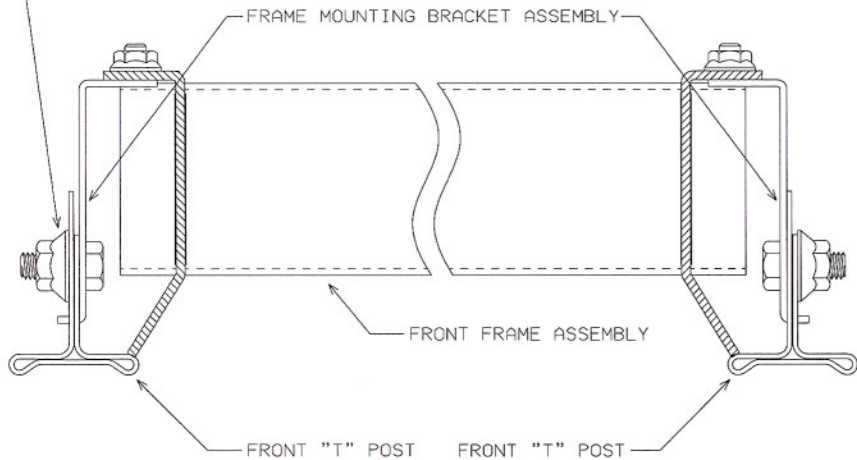


SUPPLIED FASTENERS

NOTICE: THIS IS A CONFIDENTIAL DISCLOSURE OWNED BY LYON METAL PRODUCTS FOR REFERENCE PURPOSES ONLY	REL FOR PRODUCTION	0376	10-18-99	RE	
	SYM	REVISION	ECN	DATE	BY
	NOTES:				
	1) ALL DIMENSIONS ARE INCHES				
	2) TOLERANCES (UNLESS OTHERWISE NOTED)				
	DECIMAL: .XX = ±.03				
	.XXX = ±.015				
	ANGULAR: = ±1°				
	3) REMOVE ALL SHARP EDGES AND BURRS				
	MATERIAL				
SEE DRAWING					
RAW P/N	WEIGHT(LB)	FINISH:			
102194	---	---			
DATE	DRAWN BY	CHECKED BY			
07-22-99	RE	DV			
LYON		LYON METAL PRODUCTS			
		PO BOX 671 AURORA, IL 60507			
		(800) 323-0082 FAX: (800) 367-6681			
DESCRIPTION					
MDC	INSTALL MDC DRAWERS/8000 SHELVING				
SHEET	DWG NUMBER			REV	
1	SS0505-AA			1	



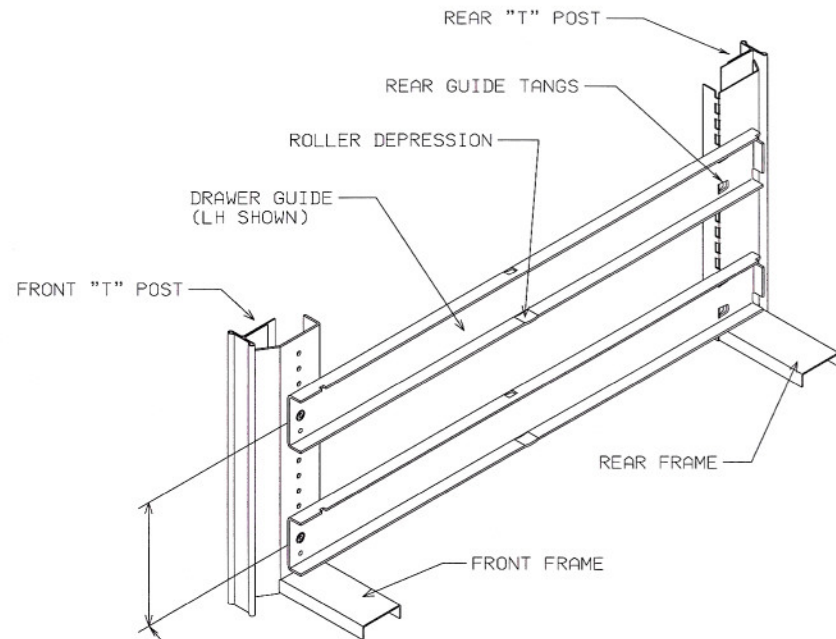
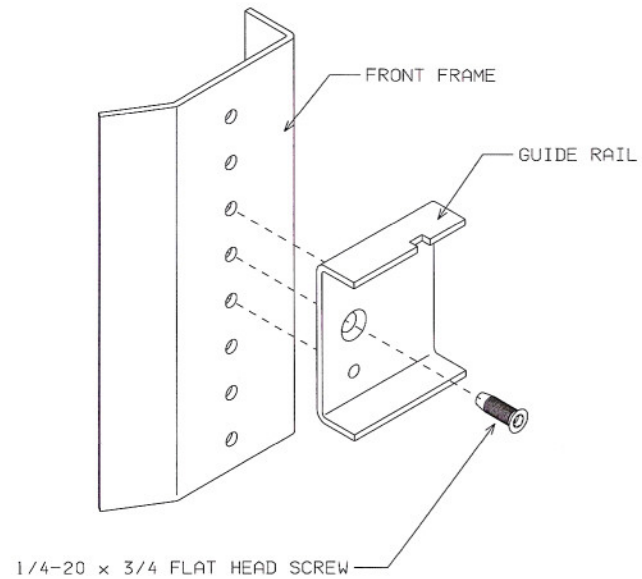
5/16-18 x 3/4" HEX HEAD CAP SCREW WITH
5/16-18 SERRATED FLANGE NUT (1 per bracket)
(4 per 18" frame)
(6 per 36" frame)



DETAIL "B"

OPERATION NUMBER 2

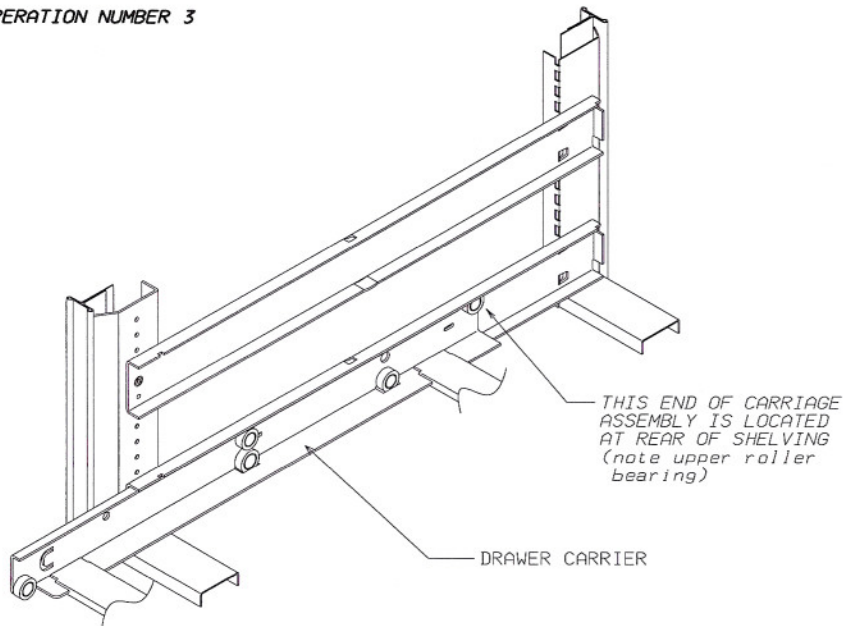
- 1) INSERT THE REAR TANGS OF ONE (1) LEFT HAND AND ONE (1) RIGHT HAND DRAWER GUIDE IN THE BOTTOM REAR FRAME SLOTS. THEIR FRONT DIMPLES FIT INTO THE FRONT FRAME HOLES AND ARE ATTACHED WITH A 1/4-20 x 3/4 FLAT HEAD SCREW. DRAWER GUIDES HANDS ARE MARKED AND ROLLER DEPRESSIONS ARE ON THE BOTTOM WHEN PROPERLY INSTALLED.
- 2) CONTINUE DRAWER GUIDE INSTALLATION. THE SPACING IS DETERMINED BY THE HEIGHT OF THE DRAWER FRONT BELOW. THEREFORE, COUNT ONE (1) HOLE FOR EACH SEGMENT OF THE DRAWER FRONT BELOW TO LOCATE THE HOLES FOR THE NEXT PAIR OF GUIDES ABOVE. (REFER TO CHART IN GENERAL INSTRUCTIONS)
- 3) WHEN INSTALLATION OF GUIDES IS COMPLETE, TIGHTEN ALL FRAME FASTENERS.



8 HOLES (SEGMENTS)
= 6 3/16" DRAWER
FRONT or
890080 DRAWER

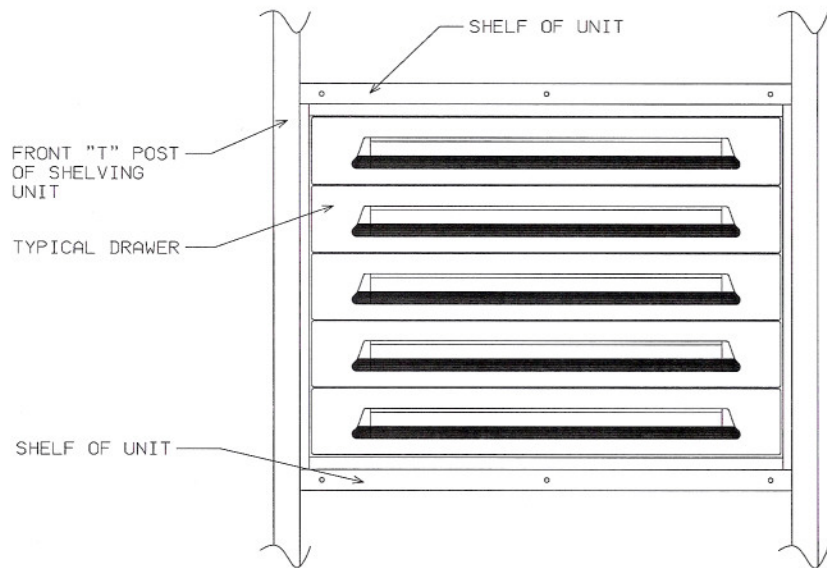
LYON		
LYON METAL PRODUCTS PO BOX 671 AURORA, IL 60507 (800) 323-0082 FAX: (800) 367-6681		
DESCRIPTION		
MDC	INSTALL MDC DRAWERS/8000 SHELVING	
SHEET	DWG NUMBER	REV
2	SS0505-AA	1

OPERATION NUMBER 3



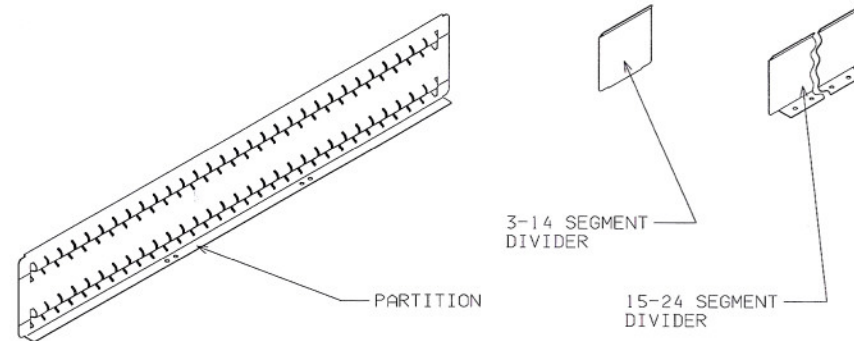
1) INSERT THE DRAWER CARRIERS INTO THE DRAWER GUIDES AND LIFT UP AT FRONT TO CLEAR STOP TABS.

OPERATION NUMBER 4



1) INSERT THE DRAWERS INTO THE CARRIERS AND LIFT UP AT FRONT TO CLEAR STOP TABS.

PARTITIONS and DIVIDERS (ordered seperately)



CAUTION

ALL DRAWER SIZES ARE DESIGNED TO CARRY A 400 lb MAXIMUM LOAD. HOWEVER, THIS CAPACITY IS BASED ON AN EVENLY DISTRIBUTED LOAD WITH PARTITIONS SCREWED IN PLACE FOR STRUCTURAL SUPPORT. THE SPECIFIC QUANTITY AND LOCATION OF THE PARTITION(S) WILL VARY FROM APPLICATION. A GOOD RULE OF THUMB IS TO MINIMIZE THE DEFLECTION AT THE CENTER OF THE DRAWER TO LESS THAN 1/4". (MOST APPLICATIONS REQUIRE ONLY ONE OR TWO PARTITIONS)

PARTITION INSTALLATION

INSERT PARTITION ENDS THROUGH RIB SLOTS AROUND PERIMETER OF DRAWER WHERE REQUIRED, MAKING SURE THAT THE PARTITION BOTTOM FLANGE IS LOCATED TO THE RIGHT OR REAR OF THE DRAWER. EACH PARTITION MUST BE ATTACHED TO THE DRAWER BOTTOM AT EACH SLOT PROVIDED USING SCREWS SUPPLIED WITH THE PARTITION. PARTITIONS ARE AVAILABLE IN FOUR (4) HEIGHTS TO MATCH HEIGHTS OF DRAWER SIDES.

DIVIDER INSTALLATION

INSERT DIVIDER ENDS THROUGH SLOTS IN DRAWER-PARTITION WHERE REQUIRED. LONGER DIVIDERS (15-24 SEGMENT) WILL HAVE A BOTTOM FLANGE TO ALLOW FOR ATTACHMENT OF THE DIVIDERS TO THE DRAWER BOTTOM. INSTALL WITH BOTTOM FLANGE TO THE RIGHT OR REAR OF THE DRAWER. USE ONE (1) SCREW SUPPLIED WITH THE DIVIDER IN EACH EXPOSED BOTTOM HOLE. DIVIDERS ARE AVAILABLE IN FOUR (4) HEIGHTS TO MATCH HEIGHTS OF PARTITIONS AND DRAWER SIDES.

LYON		
LYON METAL PRODUCTS PO BOX 671 AURORA, IL 60507 (800) 323-0082 FAX: (800) 367-6681		
MDC	DESCRIPTION INSTALL MDC DRAWERS/8000 SHELVING	
SHEET 3	DWG NUMBER SS0505-AA	REV 1