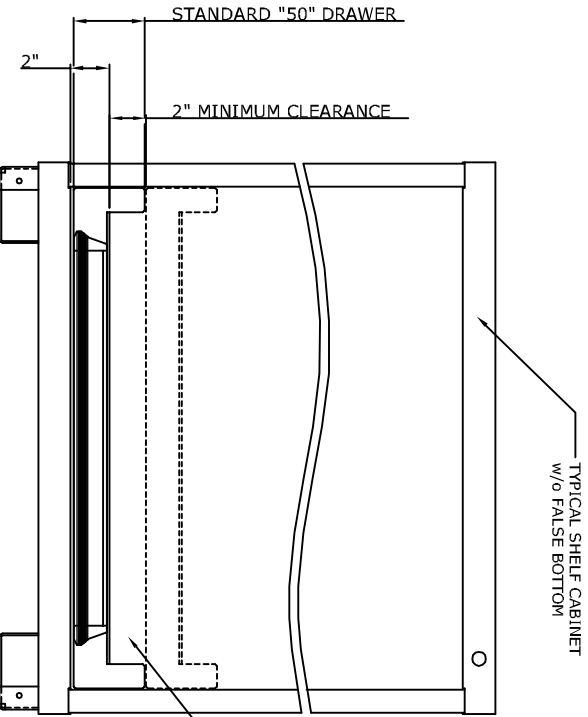
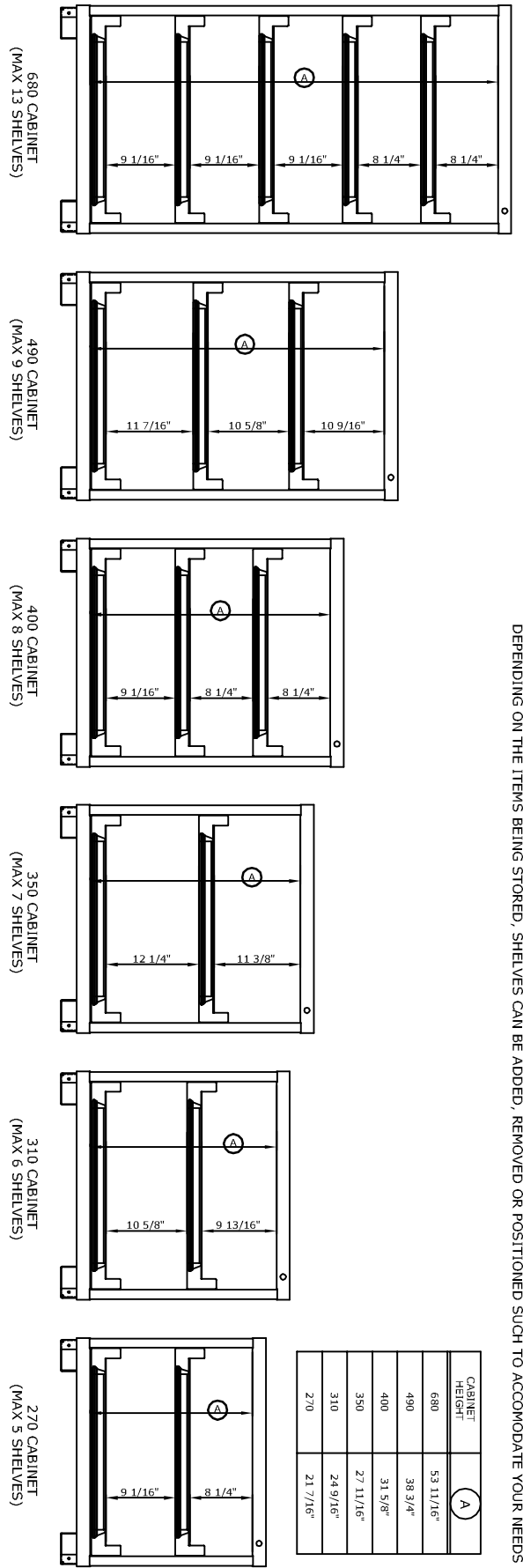
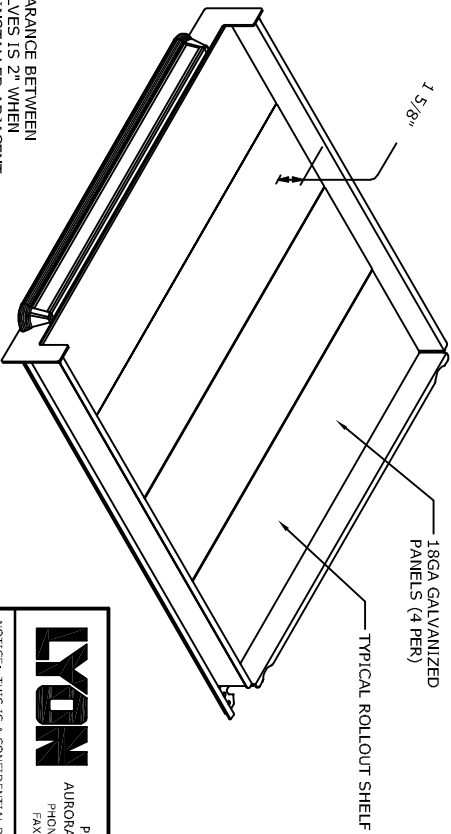


EXAMPLES OF ROLLOUT SHELF QUANTITIES, LOCATIONS and CLEARANCES BY CABINET HEIGHT

ROLLOUT SHELVES CANNOT BE USED IN CONJUNCTION WITH SWING DOORS. LATCH-IN/LATCH-OUT CAN BE ADDED TO ROLLOUT SHELVES DEPENDING ON THE ITEMS BEING STORED, SHELVES CAN BE ADDED, REMOVED OR POSITIONED SUCH TO ACCOMMODATE YOUR NEEDS



MINIMUM CLEARANCE BETWEEN ROLLOUT SHELVES IS 2" WHEN SHELVES ARE INSTALLED ADJACENT TO EACH OTHER. CLEARANCE WILL INCREASE BY APPROX 3/4" THEREAFTER.



		P.O. Box 671 AURORA, IL 60507-0671 PHONE: 630-892-8941 FAX: 800-367-6681	
NOTICE: THIS IS A CONFIDENTIAL DISCLOSURE, LOANED BY LYON WORKSPACE FOR REFERENCE PURPOSES ONLY.			
DATE	DRAWN BY	CHECKED BY	
07-19-12	JR	DWV	
DESCRIPTION INSTALLATION ROLLOUT SHELVES MDC			
SHEET	DRAWING NUMBER	REV	
1	SS1124	1	