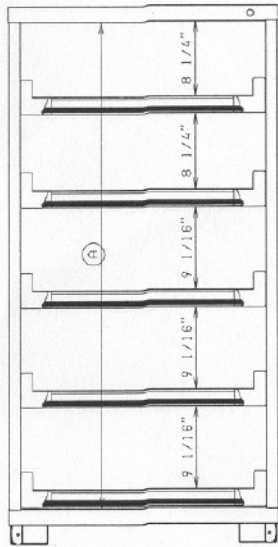
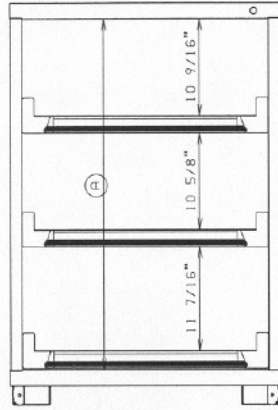


# EXAMPLES OF ROLLOUT SHELF QUANTITIES, LOCATIONS and CLEARANCES BY CABINET HEIGHT

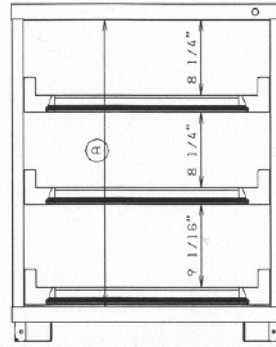
ROLLOUT SHELVES CANNOT BE USED IN CONJUNCTION WITH SWING DOORS. LATCH-IN/LATCH-OUT CAN BE ADDED TO ROLLOUT SHELVES DEPENDING ON THE ITEMS BEING STORED, SHELVES CAN BE ADDED, REMOVED OR POSITIONED SUCH TO ACCOMMODATE YOUR NEEDS



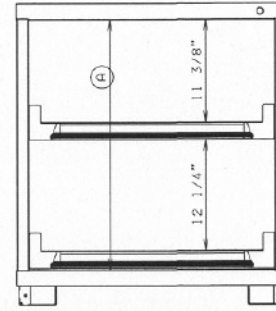
680 CABINET  
(MAX 13 SHELVES)



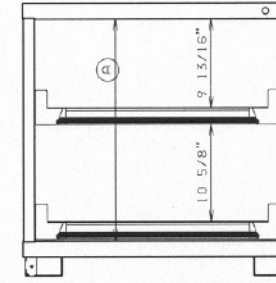
490 CABINET  
(MAX 9 SHELVES)



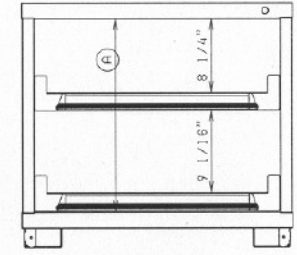
400 CABINET  
(MAX 8 SHELVES)



350 CABINET  
(MAX 7 SHELVES)

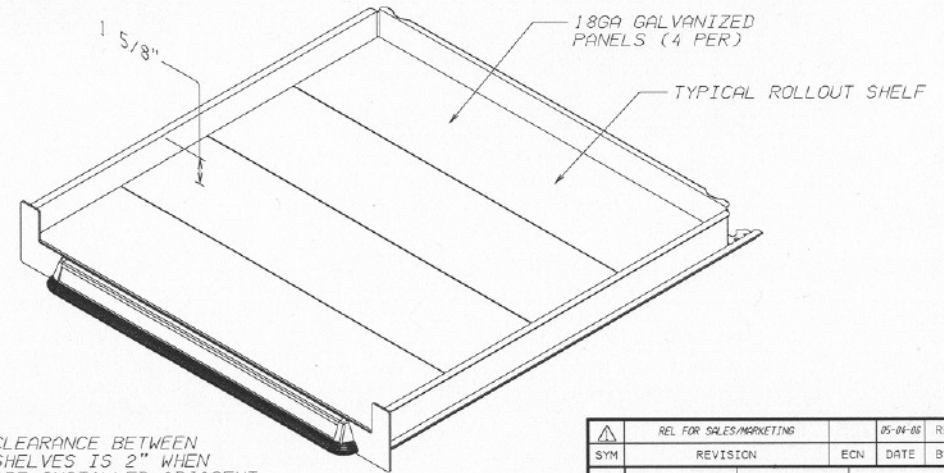
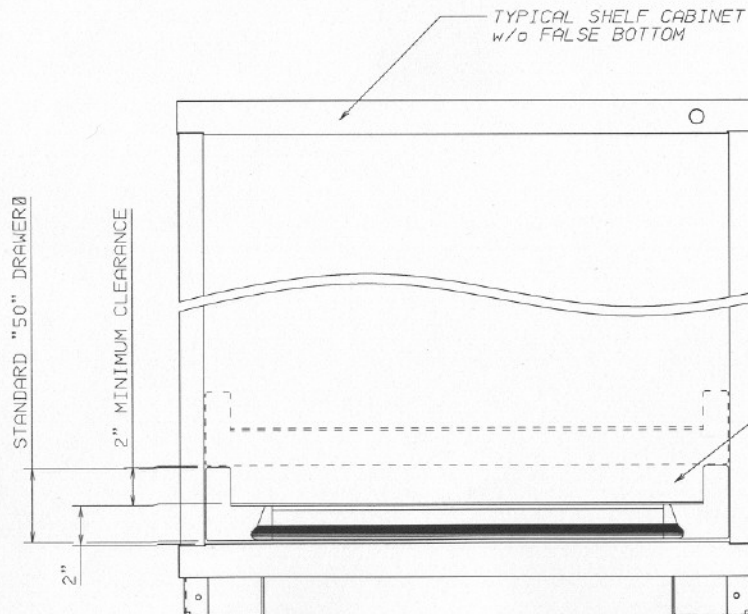


310 CABINET  
(MAX 6 SHELVES)



270 CABINET  
(MAX 5 SHELVES)

CABINET HEIGHT	(A)
680	53 11/16"
490	38 3/4"
400	31 5/8"
350	27 11/16"
310	24 9/16"
270	21 7/16"



MINIMUM CLEARANCE BETWEEN ROLLOUT SHELVES IS 2" WHEN SHELVES ARE INSTALLED ADJACENT TO EACH OTHER. CLEARANCE WILL INCREASE BY APPROX 3/4" THEREAFTER.

REL FOR SALES/MARKETING	05-04-06	RE
SYN	REVISION	ECN DATE BY
DATE	DRAWN BY	CHECKED BY
05-04-06	RE	DV
SYCAMORE SYSTEMS 449 N CALIFORNIA ST SYCAMORE, IL 60178 (815) 895-8522 FAX: 895-8188		
MDC	DESCRIPTION	
	ROLLOUT SHELVES	
SHEET	DWG NUMBER	REV
	SS1124	1

NOTICE: THIS IS A CONFIDENTIAL DISCLOSED LOANED BY STORAGE SYSTEMS FOR REFERENCE PURPOSES ONLY