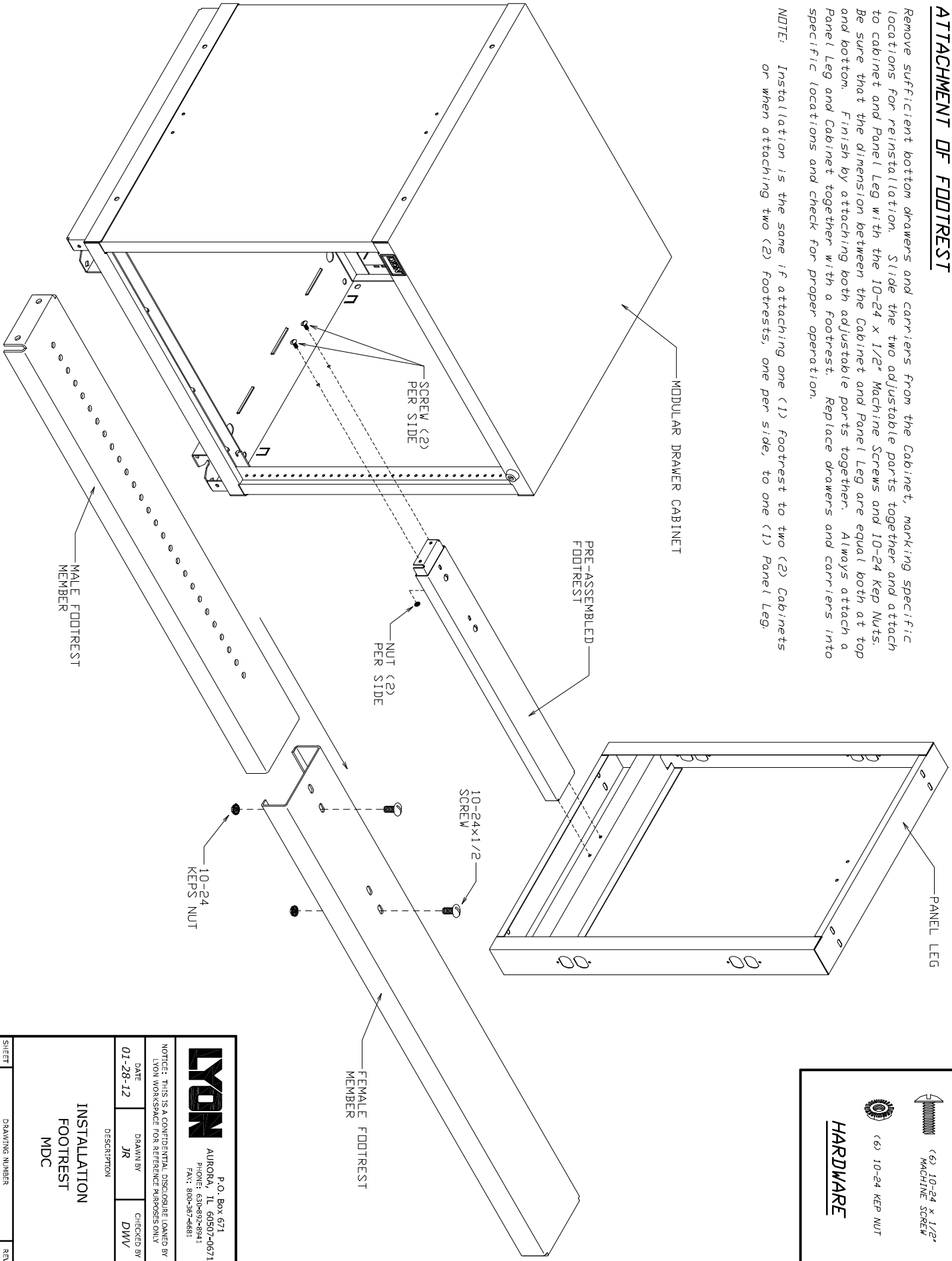



ATTACHMENT OF FOOTREST


Remove sufficient bottom drawers and carriers from the Cabinet, marking specific locations for reinstallation. Slide the two adjustable parts together and attach to cabinet and Panel Leg with the 10-24 x 1/2" Machine Screws and 10-24 Kep Nuts. Be sure that the dimension between the Cabinet and Panel Leg are equal both at top and bottom. Finish by attaching both adjustable parts together. Always attach a Panel Leg and Cabinet together with a footrest. Replace drawers and carriers into specific locations and check for proper operation.

NOTE: Installation is the same if attaching one (1) Footrest to two (2) Cabinets or when attaching two (2) footrests, one per side, to one (1) Panel Leg.





 (6) 10-24 x 1/2" MACHINE SCREW



 (6) 10-24 KEP NUT

HARDWARE

LYON

 P.O. Box 671

 AURORA, IL 60507-0671

 PHONE: 630-992-8841

 FAX: 800-367-4681

 NOTICE: THIS IS A CONFIDENTIAL DISCOUNT LOANED BY LYON WORKSPACE FOR REFERENCE PURPOSES ONLY

 DATE: 01-28-12

 DRAWN BY: JR

 CHECKED BY: DWV

 DESCRIPTION:

INSTALLATION FOOTREST MDC

SHEET	DRAWING NUMBER	REV
-	SS13229	1