


ATTACHMENT OF FOOTREST

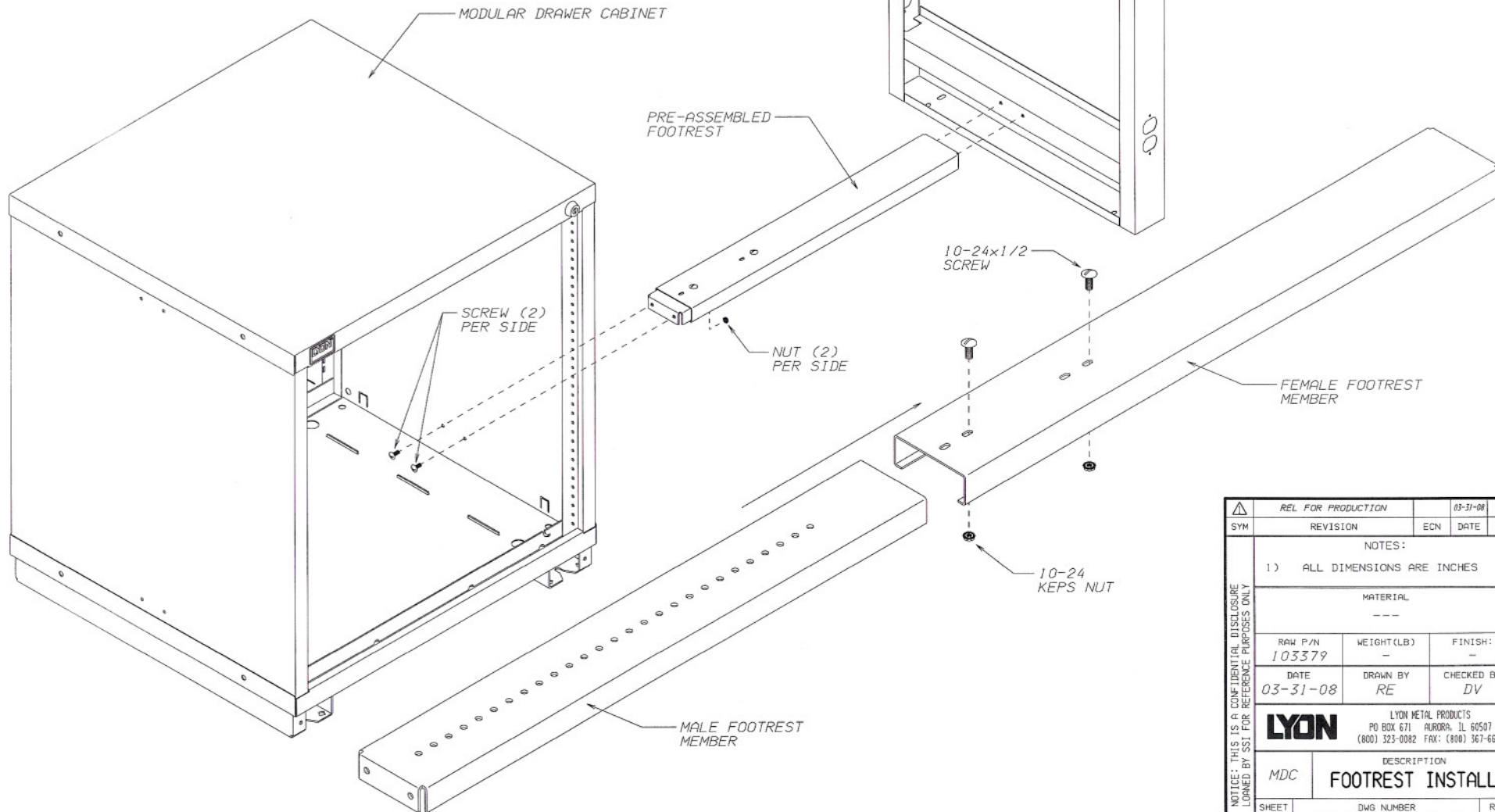
Remove sufficient bottom drawers and carriers from the Cabinet, marking specific locations for reinstallation. Slide the two adjustable parts together and attach to cabinet and Panel Leg with the 10-24 x 1/2" Machine Screws and 10-24 Kep Nuts. Be sure that the dimension between the Cabinet and Panel Leg are equal both at top and bottom. Finish by attaching both adjustable parts together. Always attach a Panel Leg and Cabinet together with a footrest. Replace drawers and carriers into specific locations and check for proper operation.

NOTE: Installation is the same if attaching one (1) footrest to two (2) Cabinets or when attaching two (2) footrests, one per side, to one (1) Panel Leg.

 (6) 10-24 x 1/2" MACHINE SCREW

 (6) 10-24 KEP NUT

HARDWARE



SYM	REL FOR PRODUCTION	03-31-08	RE
	REVISION	ECN	DATE BY
NOTICE: THIS IS A CONFIDENTIAL DISCLOSURE LOANED BY SST FOR REFERENCE PURPOSES ONLY	NOTES:		
	1) ALL DIMENSIONS ARE INCHES		
	MATERIAL		

RAW P/N	WEIGHT(LB)	FINISH:	
103379	-	-	
DATE	DRAWN BY	CHECKED BY	
03-31-08	RE	DV	
LYON	LYON METAL PRODUCTS		
	PO BOX 671 AURORA, IL 60507 (800) 323-0082 FAX: (800) 367-6681		
MDC	DESCRIPTION		
	FOOTREST INSTALL		
SHEET	DWG NUMBER	REV	
	SS1329	1	