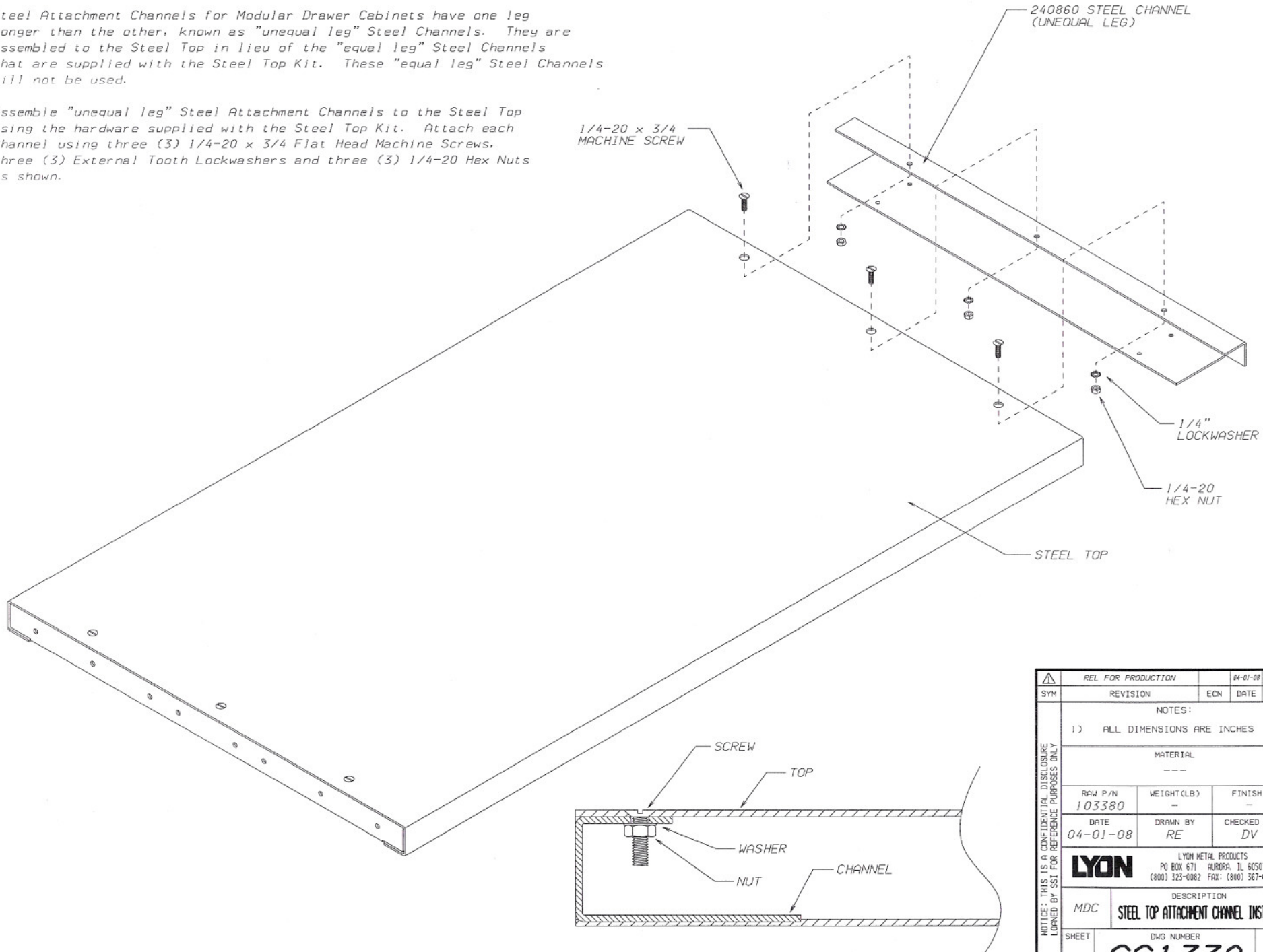


ATTACHMENT OF STEEL TOP CHANNELS

Steel Attachment Channels for Modular Drawer Cabinets have one leg longer than the other, known as "unequal leg" Steel Channels. They are assembled to the Steel Top in lieu of the "equal leg" Steel Channels that are supplied with the Steel Top Kit. These "equal leg" Steel Channels will not be used.

Assemble "unequal leg" Steel Attachment Channels to the Steel Top using the hardware supplied with the Steel Top Kit. Attach each Channel using three (3) 1/4-20 x 3/4 Flat Head Machine Screws, three (3) External Tooth Lockwashers and three (3) 1/4-20 Hex Nuts as shown.



SYM	REL FOR PRODUCTION	04-01-08	RE
	REVISION	ECN	DATE BY
NOTICE: THIS IS A CONFIDENTIAL DISCLOSURE LOANED BY SST FOR REFERENCE PURPOSES ONLY	NOTES:		
	1) ALL DIMENSIONS ARE INCHES		
	MATERIAL		

RAW P/N	WEIGHT(LB)	FINISH:	
103380	-	-	
DATE	DRAWN BY	CHECKED BY	
04-01-08	RE	DV	
MDC	LYON METAL PRODUCTS		
	PO BOX 671 AURORA, IL 60507 (800) 323-0082 FAX: (800) 367-6681		
SHEET	DESCRIPTION		
	STEEL TOP ATTACHMENT CHANNEL INSTALL		
1	DWG NUMBER	REV	
	SS1330	1	