

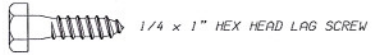
CABINET TOP DRILLING

Regardless of the type of Top you will be attaching to the Cabinet, the drill pattern will be the same. Remove sufficient top drawers and carriers from the Cabinet, marking specific locations for reinstallation. Drill two (2) 5/16" diameter holes in the locations as shown below.

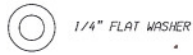
WOOD, SHOP TOP, LAMINATE, STAINLESS STEEL TOP ATTACHMENT

Drill four (4) 13/16" diameter 1" deep holes on the underside of the Wood Top as shown. Align the holes in the top of the Cabinet and Panel Leg with the holes in the Wood Top. Attach with the 1/4" x 1" Lag Screws and 1/4" Flat Washers. (Lubricate the screw threads prior to assembly). Replace drawers and carriers into specific locations and check for proper drawer operation.

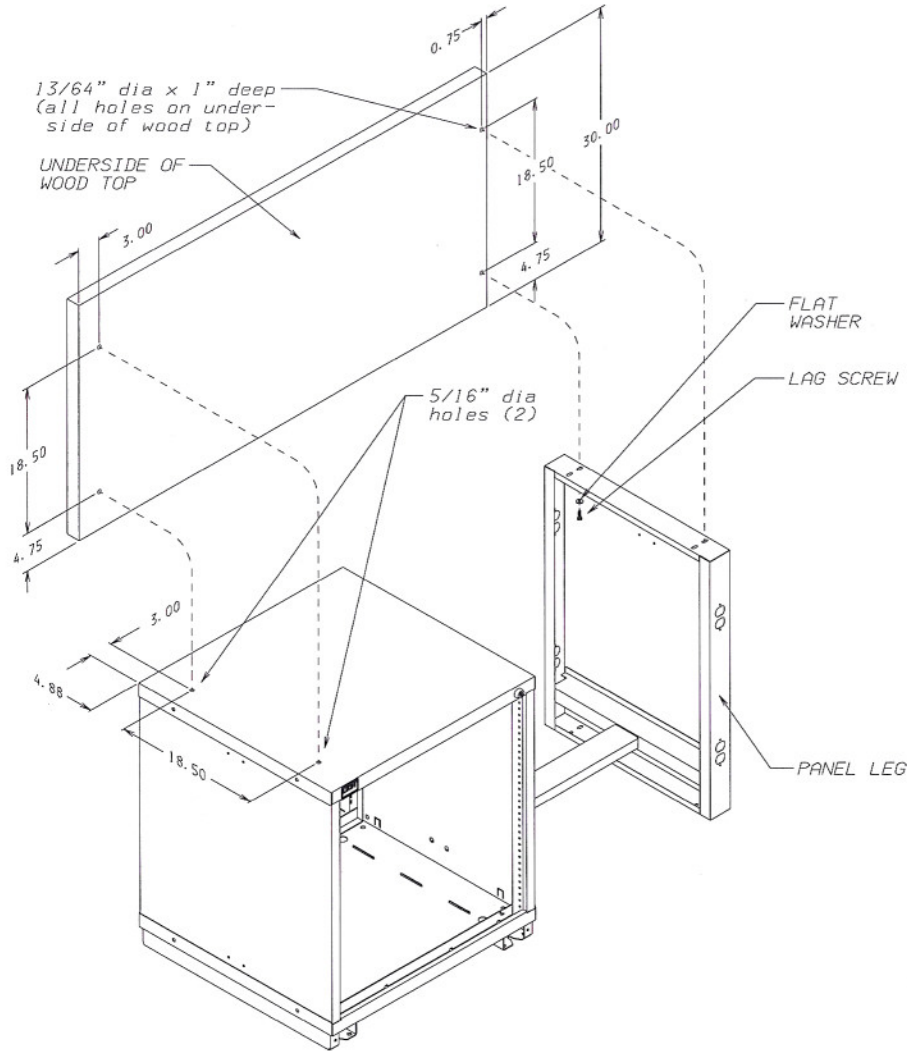
SUPPLIED
HARDWARE
(for WOOD TOP)



1/4 x 1" HEX HEAD LAG SCREW



1/4" FLAT WASHER



ONE WOOD TOP TO ONE
CABINET AND PANEL LEG

STEEL TOP ATTACHMENT

Align the holes in the top of the Cabinet and Panel Leg with the holes in the Steel Top. Attach with the 1/4-20 x 1" Thread Cutting Screws and #12 Countersunk Washers. Replace drawers and carriers into specific locations and check for proper drawer operation.

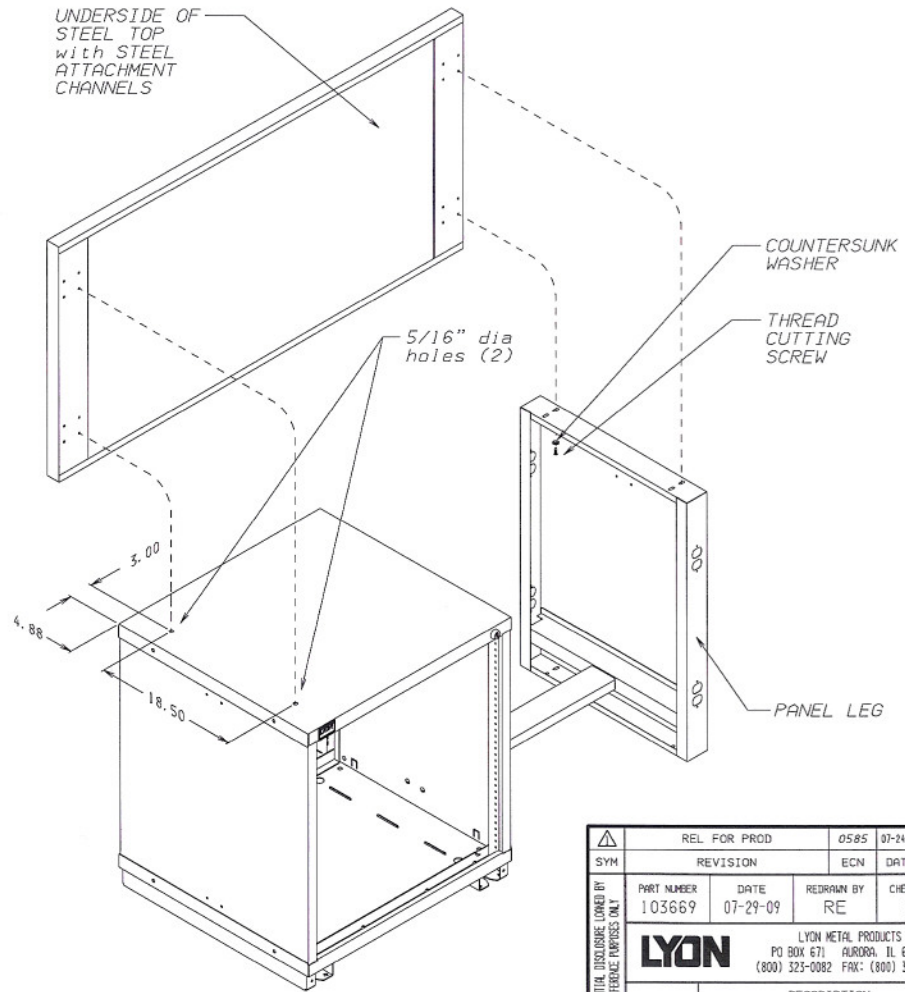
SUPPLIED
HARDWARE
(for STEEL TOP)



1/4-20 x 3/4" T20 TORX FLAT
HEAD THREAD CUTTING SCREW



#12 COUNTERSUNK WASHER



ONE STEEL TOP TO ONE
CABINET AND PANEL LEG

SYM	REL FOR PROD	0585	07-21-09	RE
	REVISION	ECN	DATE	BY
PART NUMBER	103669	DATE	07-29-09	RE
	RE	RE	RE	DV
LYON LYON METAL PRODUCTS PO BOX 671 AURORA, IL 60507 (800) 325-0082 FAX: (800) 367-6881				
DESCRIPTION				
MDCII	INSTALL - 300 TOP to CBT & PANEL LEG			
SHEET	DWG NUMBER			REV
1	SS1436			1

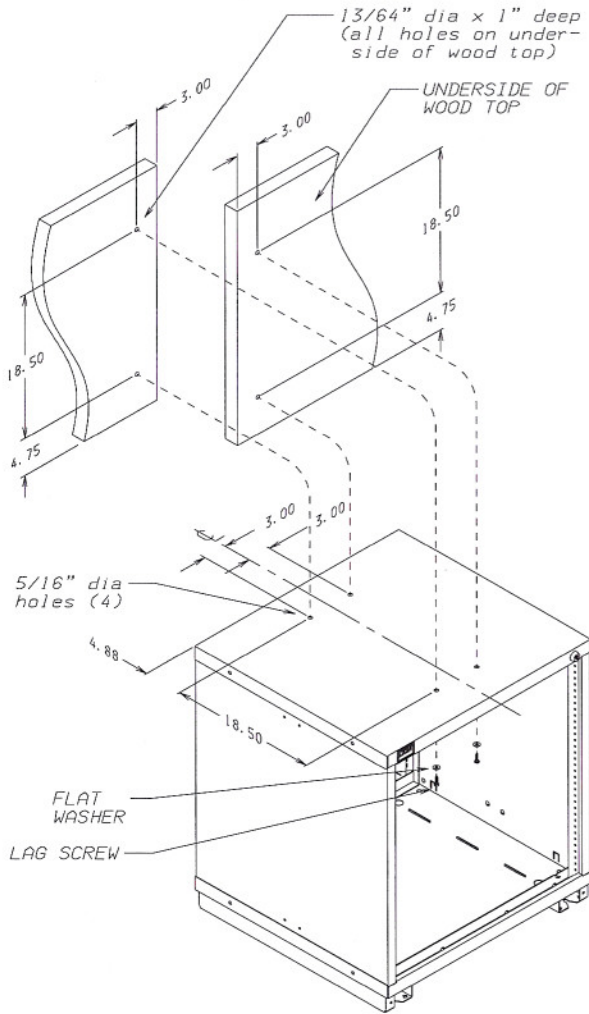
NOTICE: THIS IS A CONFIDENTIAL DISCLOSED DRAWING. IT IS THE PROPERTY OF LYON METAL PRODUCTS. REPRODUCTION OR DISTRIBUTION IS PROHIBITED WITHOUT THE WRITTEN PERMISSION OF LYON METAL PRODUCTS.

CABINET TOP DRILLING

Regardless of the type of Top you will be attaching to the Cabinet, the drill pattern will be the same. Remove sufficient top drawers and carriers from the Cabinet, marking specific locations for reinstallation. Drill four (4) 5/16" diameter holes in the locations as shown below.

WOOD TOP ATTACHMENT

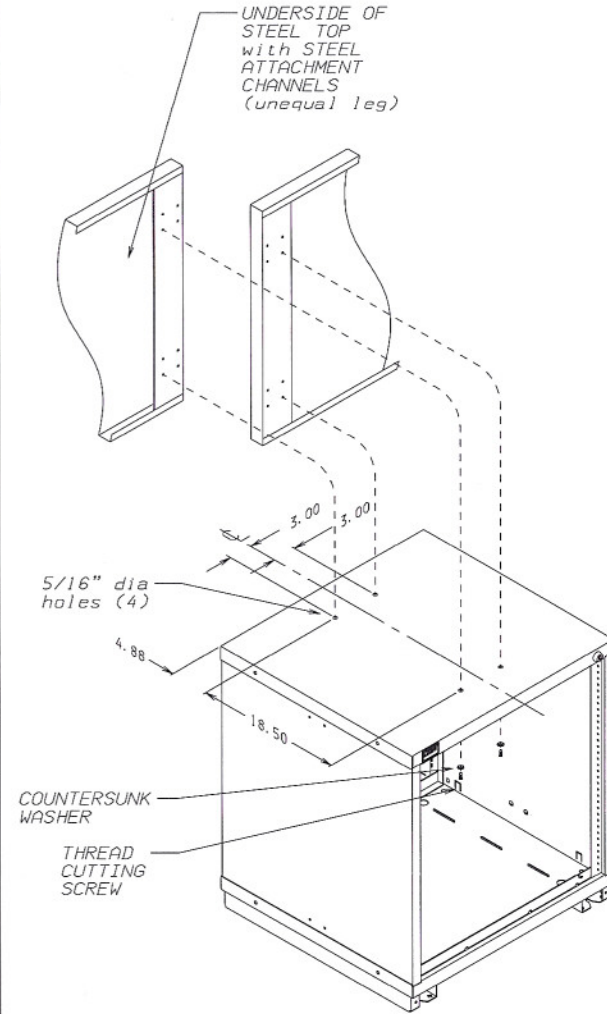
Drill two (2) 13/16" diameter 1" deep holes on each underside of the Wood Tops as shown. Align the holes in the top of the Cabinet with the holes in the Wood Tops. Attach with the 1/4" x 1" Lag Screws and 1/4" Flat Washers. (Lubricate the screw threads prior to assembly). Replace drawers and carriers into specific locations and check for proper drawer operation.



TWO WOOD TOPS TO ONE CABINET

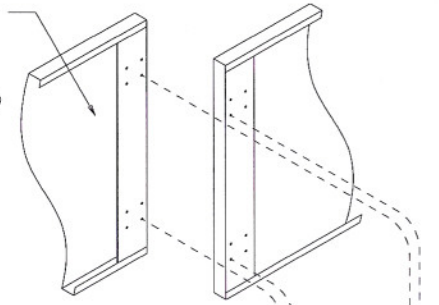
STEEL TOP ATTACHMENT

Align the holes in the top of the Cabinet with the holes in the Steel Tops. Attach with the 1/4"-20 x 1" Thread Cutting Screws and #12 Countersunk Washers. Replace drawers and carriers into specific locations and check for proper drawer operation.



TWO STEEL TOPS TO ONE CABINET

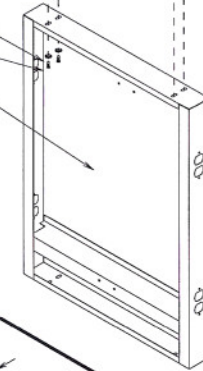
UNDERSIDE OF STEEL TOP with STEEL ATTACHMENT CHANNELS (unequal leg)



COUNTERSUNK WASHER
THREAD CUTTING SCREW
PANEL LEG

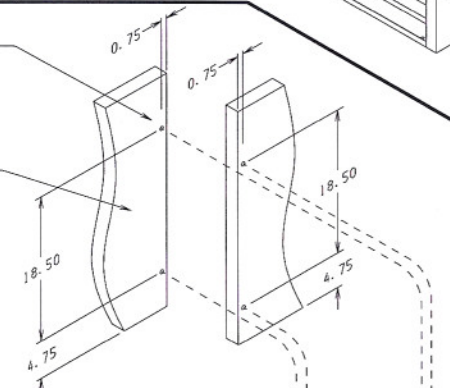
STEEL TOP ATTACHMENT

Align the holes in the top of of the Panel Leg with the holes in the Steel Top. Attach with the 1/4"-20 x 1" Thread Cutting Screws and #12 Countersunk Washers.



13/64" dia x 1" deep (all holes on underside of wood top)

UNDERSIDE OF WOOD TOP



FLAT WASHER
LAG SCREW
PANEL LEG

WOOD TOP ATTACHMENT

Drill two (2) 13/16" diameter 1" deep holes on each underside of the Wood Tops as shown. Align the holes on the top of the Cabinet with the holes in the Wood Tops. Attach with the 1/4" x 1" Lag Screws and 1/4" Flat Washers. (Lubricate the screw threads prior to assembly).

