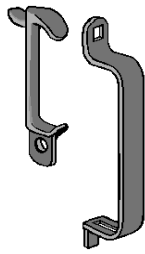


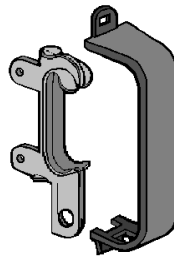
THESE PRE-1957 HANDLES AND PARTS ARE **NOT AVAILABLE** FROM LYON - SEE PAGE 4



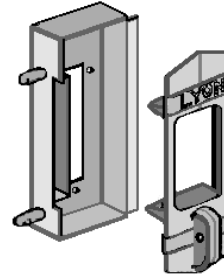
PRE 1933



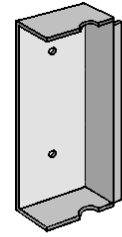
1933-1935



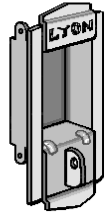
1935-1946



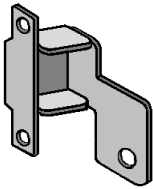
1946-1952



1953-JAN 1957



JANUARY 1957 TO NOVEMBER 1965



unavailable as of 2016  
#6739-RH (Shown) Lift  
#6769-LH Lift



#6738 Stationary Handle



#6740  
Rubber Bumper

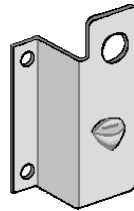


#6772  
Chrome Padlock Strike  
APRIL 1953 TO AUG 1981

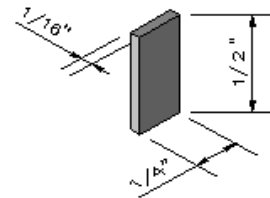
APRIL 1960 TO OCTOBER 1965 (Los Angeles Board Handle)



#6761 Stationary Handle

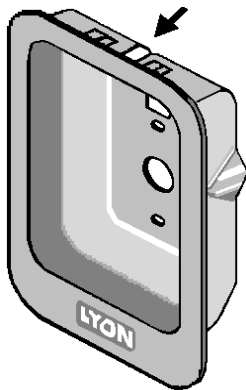


#6762 RH Handle Lift

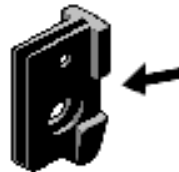


With (2) Bumpers

JANUARY 1988 TO SEPTEMBER 2004

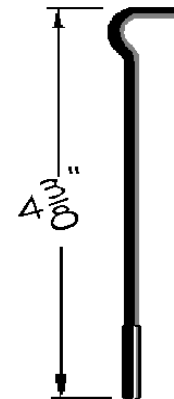


Recessed Handle (Zinc Alloy)



Black Plastic Finger Lift

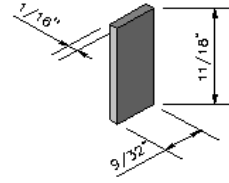
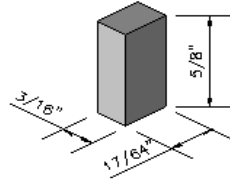
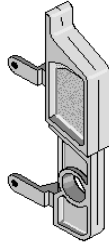
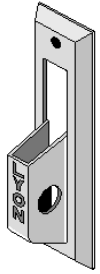
FEBRUARY 1980 TO SEPTEMBER 2004



#6786 Wire Catch  
AVAILABLE

**THIS HANDLE AND LIFT ARE NOT AVAILABLE FROM LYON  
SEE PAGE 4. CONTACT LYON FOR INTERCHANGE SPECIFICS**

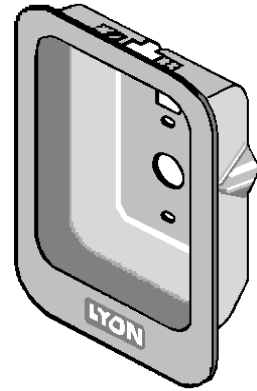
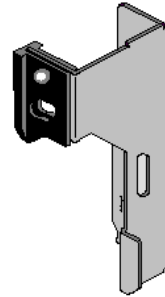
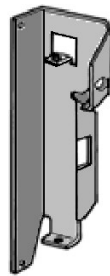
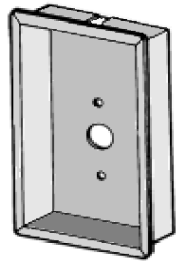
NOV 1965 TO SEPTEMBER 1981



#6741 Stationary Handle #6742 RH Lift (shown) #6756 LH Lift #6743 Upper Bumper #6744 Lower Bumper

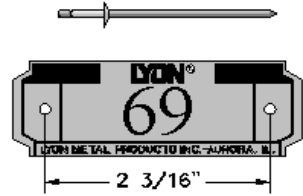
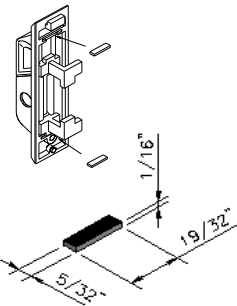
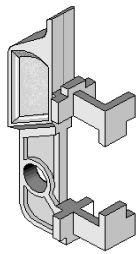
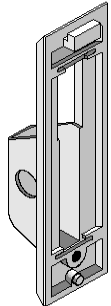
MAY 1983 TO JAN 1988

SEPTEMBER 2004 TO PRESENT



#6745 Stainless Steel Recessed Handle #6746 RH Lift (shown) #6749 RH Lift (shown) #6751 Black Plastic Finger Lift #6747 LH Lift #6750 LH Lift #6748 Recessed Handle

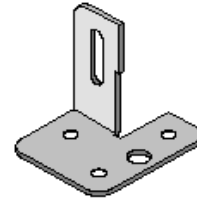
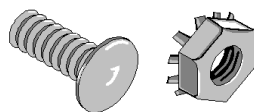
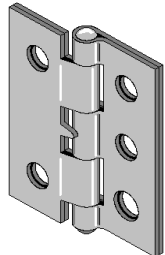
SEPTEMBER 1981 TO PRESENT



#5829 Number Plate for Lockers (rivets incl) #5839 Number Plate for Basket Rack with (nuts & bolts not incl)

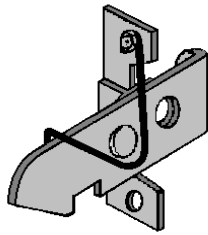
#6781 Stationary Handle #6782 RH Lift (shown) #6783 LH Lift #6784 Rubber Bumper #6785 Rubber Bumper

APRIL 1953 TO PRESENT

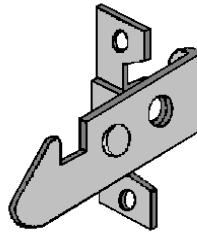


#6752 Locker Hinge #6710 (shown) 10/24 x 1/2" Bolt and Kep Nut #6767 10/24 x 3/8" w/ Standard Nut #6768 10/24 x 1/2" w/ Standard Nut #6700 Locker Foot #6701 Pal Nut For Foot

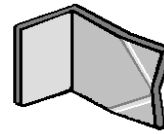
MAY 1962 TO JUNE 1972



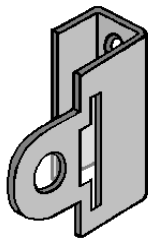
Spring Actuated Latch  
**NOT AVAILABLE FROM LYON**



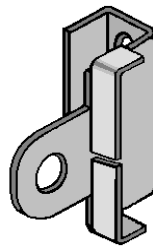
#6758  
Gravity Latch



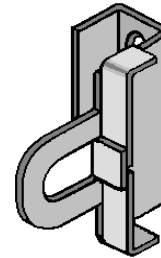
#6759  
Gravity Clip



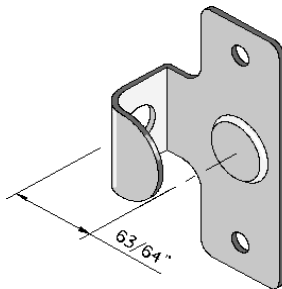
Box Locker Clip  
APRIL 1953 TO APRIL 1958  
**NOT AVAILABLE FROM LYON**



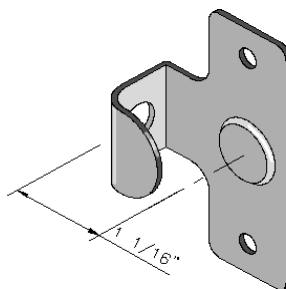
Box Locker Clip  
APRIL 1958 TO NOV 1958  
**REPLACE WITH 6763**



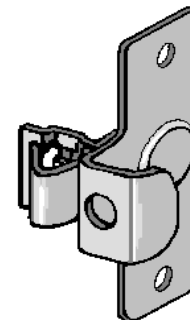
#6763  
Box Locker Lock Clip  
NOV 1958 TO PRESENT



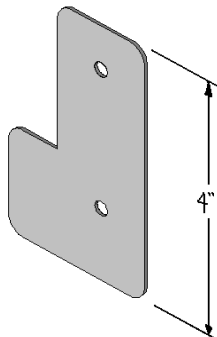
Box Locker Door Pull  
APRIL 1953 TO APRIL 1958  
**NOT AVAILABLE FROM LYON**



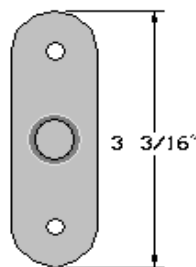
#6719  
Box Locker Door Pull  
NOV 1958 TO PRESENT



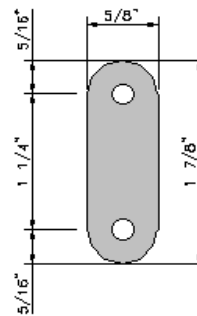
#6753  
Box Locker Roll Point Catch  
JUNE 1972 TO PRESENT



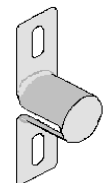
#6720  
Box Locker SS Padlock Strike  
1953 TO PRESENT



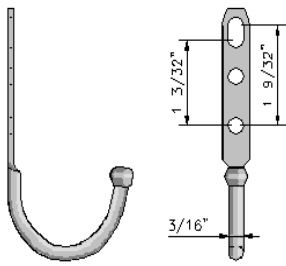
#6734  
Lock Hole Filler  
1946 TO PRESENT



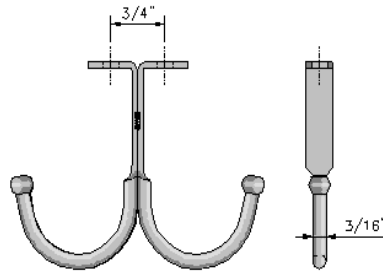
#6765  
Expanded Metal Hook Strap  
MARCH 1973 TO PRESENT



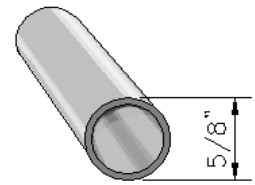
#6708  
Coat Rod Support  
1946 TO PRESENT



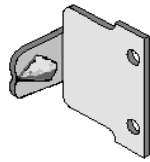
#6711  
Single Prong Hook  
1935 TO PRESENT



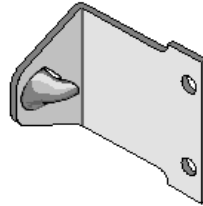
#6712  
Double Prong Hook  
1955 TO PRESENT



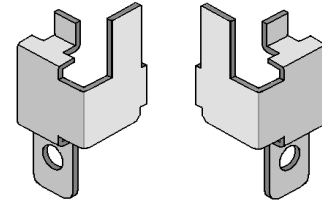
#6703-12" Coat Rod  
#6704-15" Coat Rod  
#6705-18" Coat Rod  
#6707-24" Coat Rod  
1946 TO PRESENT



#6755  
Two Person Upper Latch  
APRIL 1953 TO AUG 1970



#6754  
Two Person Upper Latch  
AUG 1970 TO PRESENT



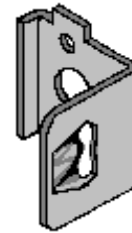
#6774 LH / # 6773 RH  
Two Person Lockwire Strap  
1975 TO PRESENT



#6722 RH (Shown)  
Door Jamb  
Includes 6731 Bumper  
#6723 LH  
APRIL 1953 TO NOV 1958

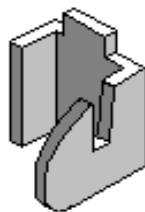


#6724 RH (Shown)  
Door Jamb  
Includes 6732 Bumper  
#6725 LH  
NOV 1958 to FEB 1980

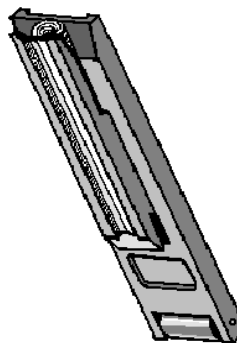


#6726  
Door Jamb  
Includes 6785 Bumper  
FEB 1980 TO SEPT 2004  
(EXCHANGE MASTER FROM 1978)

SEPTEMBER 2004 TO PRESENT



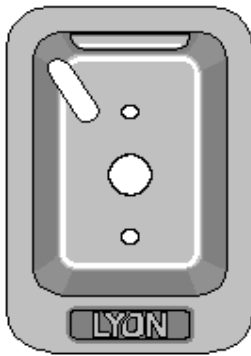
#6727 RH (Shown)  
Door Jamb



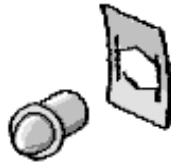
#6799 Nano Roller  
Lockbar Catch



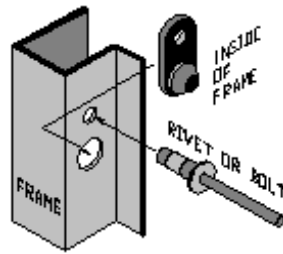
#6800  
Black Nylon Lockbar Retainer



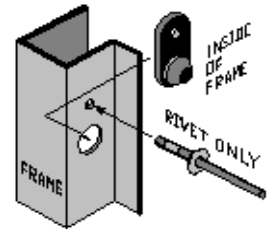
#6778 Single Point Handle  
JULY 1993 TO PRESENT



#6771 Bullet Catch With Tinnerman Nut  
4-1994 TO 3-2003

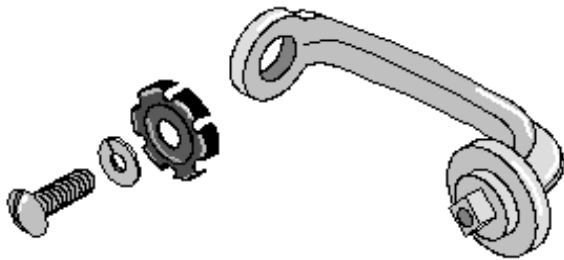


#6801 For Larger #10 Hole Black Nylon Catch  
3-2003 TO 12-2008

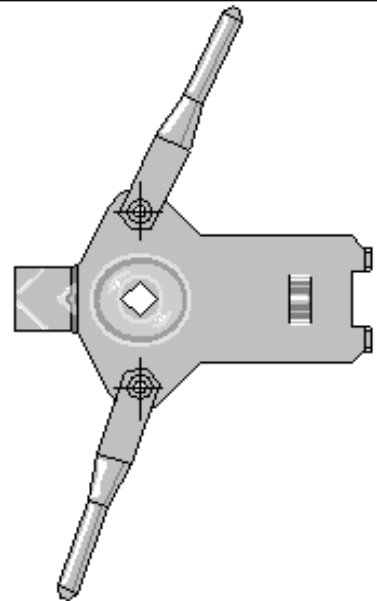


#6807 Smaller Rivet Black Nylon Catch  
2009 TO PRESENT

MARCH 1973 TO PRESENT



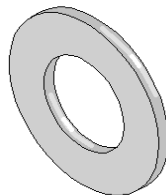
#6764 Turn Handle W/ Attachment Hardware For Expanded Metal Lockers



Lockrod Assembly For Expanded Metal Lockers  
#676620 For 20" Door #676636 For 36" Door  
#676624 For 24" Door #676660 For 60" Door  
#676630 For 30" Door #676672 For 72" Door



#6802 Replacement Spring Washer

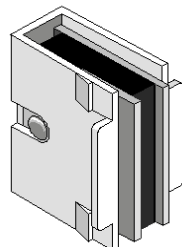


#6805 Replacement Nylon Washer (Solid Doors)

APRIL 1997 TO PRESENT

JUNE 2006 TO PRESENT

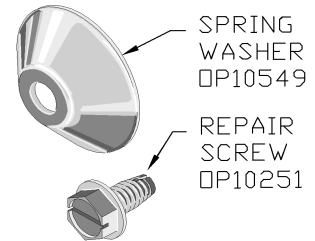
1981 TO PRESENT



#6804 Magnetic Catch for IFAW



#6803 Bumper for Angle Iron



#6806 Handle Repair Hardware  
Larger screw is for use when standard screw is stripped out