

# WORK BENCH CONCEPTIONS

- Choose pre-engineered units (*single part number*) or build your own by modifying the "consist of" lists.
- Component details can be found on pages 66-69
- All pre-engineered units feature empty drawers (*no layouts*) and multiple drawer locking system
- All concepts can be assembled either left or right side
- Field assembled only (*easy to follow instructions provided*)
- Specify framework/housing color and drawer color, same as steps 1 and 2 on page 6.

Example = **DD251WBC01**  
 (for dove gray frame/housing and dove gray drawers)

<b>AA</b>	<b>BB</b>	<b>DD</b>	<b>HH</b>	<b>JJ</b>	<b>KK</b>	<b>PP</b>
Ash	Wedgewood Blue	Dove Gray	Red Baron	Hunter Green	Vulcan Black	Putty



## CONCEPT 1

Cat. No. ■■251WBC01

Consists of:		
Qty.	Cat. No.	Description
1	<b>M352230000A0L</b>	Bench Slender Pre-Engineered Cabinet
1	<b>251OPL350</b>	Bench Open Panel Leg
1	<b>240853</b>	Adjustable Footrest
1	<b>251WHD60</b>	Hardwood Work Surface, 60"w



## CONCEPT 2

Cat. No. ■■251WBC02

Consists of:		
Qty.	Cat. No.	Description
1	<b>M352230000A0L</b>	Bench Slender Pre-Engineered Cabinet
1	<b>251OPL350</b>	Bench Open Panel Leg
1	<b>240853</b>	Adjustable Footrest
1	<b>251WHD60</b>	Hardwood Work Surface, 60"w
1	<b>251WBS60</b>	Back Stop, 60"w
1	<b>251WSSR</b>	Side Stop, RH
1	<b>251WSSL</b>	Side Stop, LH
1	<b>2625</b>	12"h Shelf Riser, 60"w



### CONCEPT 3

Cat. No. ■■251WBC03

Consists of:

Qty.	Cat. No.	Description
1	<b>M352230000A0L</b>	Bench Slender Pre-Engineered Cabinet
1	<b>M352230000B0L</b>	Bench Slender Pre-Engineered Cabinet
1	<b>251WHD72</b>	Hardwood Work Surface, 72"w



### CONCEPT 4

Cat. No. ■■251WBC04

Consists of:

Qty.	Cat. No.	Description
1	<b>M352230000A0L</b>	Bench Slender Pre-Engineered Cabinet
1	<b>M352230000B0L</b>	Bench Slender Pre-Engineered Cabinet
1	<b>251WHD72</b>	Hardwood Work Surface, 72"w
1	<b>251WBS72</b>	Back Stop, 72"w
1	<b>251WSSR</b>	Side Stop, RH
1	<b>251WSSL</b>	Side Stop, LH
1	<b>2629</b>	18"h Shelf Riser, 72"w
1	<b>2631</b>	Pick Rack, 72"w



### CONCEPT 5

Cat. No. ■■251WBC05

Consists of:

Qty.	Cat. No.	Description
1	<b>M352230000B0L</b>	Bench Slender Pre-Engineered Cabinet
2	<b>251OPL350</b>	Bench Open Panel Leg
2	<b>251STR36</b>	Stringer
1	<b>251WHD72</b>	Hardwood Work Surface, 72"w



### CONCEPT 6

Cat. No. ■■251WBC06

Consists of:

Qty.	Cat. No.	Description
1	<b>M352230000B0L</b>	Bench Slender Pre-Engineered Cabinet
2	<b>251OPL350</b>	Bench Open Panel Leg
2	<b>251STR36</b>	Stringer
1	<b>251WHD72</b>	Hardwood Work Surface, 72"w
1	<b>251WBS72</b>	Back Stop, 60"w
1	<b>251WSSR</b>	Side Stop, RH
1	<b>251WSSL</b>	Side Stop, LH
1	<b>2629</b>	18"h Shelf Riser, 72"w
1	<b>2631</b>	Pick Rack, 72"w



# WORK BENCH CONCEPTIONS

- Choose pre-engineered units (*single part number*) or build your own by modifying the "consist of" lists.
- Component details can be found on pages 66-69
- All pre-engineered units feature empty drawers (*no layouts*) and multiple drawer locking system
- All concepts can be assembled either left or right side
- Field assembled only (*easy to follow instructions provided*)
- Specify framework/housing color and drawer color, same as step 2 on page 6.

Example = **DD251WBC01**  
 (for dove gray frame/housing and dove gray drawers)

<b>AA</b>	<b>BB</b>	<b>DD</b>	<b>HH</b>	<b>JJ</b>	<b>KK</b>	<b>PP</b>
Ash	Wedgewood Blue	Dove Gray	Red Baron	Hunter Green	Vulcan Black	Putty



## CONCEPT 7

Cat. No. ■■251WBC07

Consists of:

Qty.	Cat. No.	Description
1	<b>M68303010140L</b>	Eye-Level Standard Pre-Engineered Cabinet
1	<b>251OPL350</b>	Bench Open Panel Leg
1	<b>251UCSD60</b>	Under-Counter Shelf (set of 2)
1	<b>250HILO</b>	Hi-Lo Bracket Kit
1	<b>251WHD60</b>	Hardwood Work Surface, 60"w



## CONCEPT 8

Cat. No. ■■251WBC08

Consists of:

Qty.	Cat. No.	Description
1	<b>M68303010140L</b>	Eye-Level Standard Pre-Engineered Cabinet
1	<b>251OPL350</b>	Bench Open Panel Leg
1	<b>251UCSD60</b>	Under-Counter Shelf (set of 2)
1	<b>250HILO</b>	Hi-Lo Bracket Kit
1	<b>251WHD60</b>	Hardwood Work Surface, 60"w
1	<b>251WBS60</b>	Back Stop 60"w
1	<b>251WSSL</b>	Side Stop, LH
1	<b>2625</b>	12"h Shelf Riser, 60"w



### CONCEPT 9

Cat. No. ■■251WBC09

Consists of:

Qty.	Cat. No.	Description
1	<b>M68303010140L</b>	Eye-Level Standard Pre-Engineered Cabinet
1	<b>M353030000B0L</b>	Bench Standard Pre-Engineered Cabinet
1	<b>250HILO</b>	Hi-Lo Bracket Kit
1	<b>251WHD72</b>	Hardwood Work Surface, 72"w



### CONCEPT 10

Cat. No. ■■251WBC10

Consists of:

Qty.	Cat. No.	Description
1	<b>M68303010140L</b>	Eye-Level Standard Pre-Engineered Cabinet
1	<b>M353030000B0L</b>	Bench Standard Pre-Engineered Cabinet
1	<b>250HILO</b>	Hi-Lo Bracket Kit
1	<b>251WHD72</b>	Hardwood Work Surface, 72"w
1	<b>251WBS72</b>	Back Stop 72"w
1	<b>251WSSL</b>	Side Stop, LH
1	<b>2629</b>	18"h Shelf Riser, 72"w
1	<b>2631</b>	Pick Rack, 72"w



### CONCEPT 11

Cat. No. ■■251WBC11

Consists of:

Qty.	Cat. No.	Description
1	<b>M353030000A0L</b>	Bench Standard Pre-Engineered Cabinet
1	<b>251CPL350</b>	Bench Closed Panel Leg
2	<b>251UCS72</b>	Under-Counter Shelf
1	<b>251MDP72350</b>	Bench Modesty Panel
1	<b>251WHD72</b>	Hardwood Work Surface, 72"w



### CONCEPT 12

Cat. No. ■■251WBC12

Consists of:

Qty.	Cat. No.	Description
1	<b>M353030000A0L</b>	Bench Standard Pre-Engineered Cabinet
1	<b>251CPL350</b>	Bench Closed Panel Leg
2	<b>251UCS72</b>	Under-Counter Shelf
1	<b>251MDP72350</b>	Bench Modesty Panel
1	<b>251WHD72</b>	Hardwood Work Surface, 72"w
1	<b>251WSSR</b>	Side Stop, RH
1	<b>251WSSL</b>	Side Stop, LH
1	<b>251BRS7221</b>	21"h Bookcase Riser, 72"w
1	<b>251RBP7221</b>	21"h Bookcase Riser Back Panel, 72"w
1	<b>79020</b>	Light Fixture



# WORK BENCH CONCEPTIONS

- Choose pre-engineered units (*single part number*) or build your own by modifying the "consist of" lists.
- Component details can be found on pages 66-69
- All pre-engineered units feature empty drawers (*no layouts*) and multiple drawer locking system
- All concepts can be assembled either left or right side
- Field assembled only (*easy to follow instructions provided*)
- Specify framework/housing color and drawer color, same as step 2 on page 6.

Example = **DD251WBC01**  
 (for dove gray frame/housing and dove gray drawers)

<b>AA</b>	<b>BB</b>	<b>DD</b>	<b>HH</b>	<b>JJ</b>	<b>KK</b>	<b>PP</b>
Ash	Wedge-wood Blue	Dove Gray	Red Baron	Hunter Green	Vulcan Black	Putty



## CONCEPT 13

Cat. No. ■■251WBC13

Consists of:

Qty.	Cat. No.	Description
1	<b>M353030000A0L</b>	Bench Standard Pre-Engineered Cabinet
1	<b>251CPL350</b>	Bench Closed Panel Leg
2	<b>251UCS72</b>	Under-Counter Shelf
1	<b>251MDP72350</b>	Bench Modesty Panel
1	<b>251WHD72</b>	Hardwood Work Surface, 72"w
1	<b>251WSSR</b>	Side Stop, RH
1	<b>251WSSL</b>	Side Stop, LH
1	<b>251BRS7221</b>	21"h Bookcase Riser, 72"w
1	<b>251RBP7221</b>	21"h Bookcase Riser Back Panel, 72"w
1	<b>79020</b>	Light Fixture
2	<b>251BKCD270M</b>	Bookcase with Doors, 36"w



### CONCEPT 14

Cat. No. ■■251WBC14

Consists of:

Qty.	Cat. No.	Description
1	<b>M353030000AOL</b>	Bench Standard Pre-Engineered Cabinet
1	<b>M353030000BOL</b>	Bench Standard Pre-Engineered Cabinet
1	<b>251WHD90</b>	Hardwood Work Surface, 90"w



### CONCEPT 15

Cat. No. ■■251WBC15

Consists of:

Qty.	Cat. No.	Description
1	<b>M353030000AOL</b>	Bench Standard Pre-Engineered Cabinet
1	<b>M353030000BOL</b>	Bench Standard Pre-Engineered Cabinet
1	<b>251WHD90</b>	Hardwood Work Surface, 90"w
1	<b>251BRS9021</b>	Bookcase Riser



### CONCEPT 16

Cat. No. ■■251WBC16

Consists of:

Qty.	Cat. No.	Description
1	<b>M353030000AOL</b>	Bench Standard Pre-Engineered Cabinet
1	<b>M353030000BOL</b>	Bench Standard Pre-Engineered Cabinet
1	<b>251WHD90</b>	Hardwood Work Surface, 90"w
1	<b>251BRS9021</b>	Bookcase Riser
3	<b>251BKCD270</b>	Bookcase with Doors, 30"w



# WORK BENCH CONCEPTIONS

- Choose pre-engineered units (*single part number*) or build your own by modifying the "consist of" lists.
- Component details can be found on pages 66-69
- All pre-engineered units feature empty drawers (*no layouts*) and multiple drawer locking system
- All concepts can be assembled either left or right side
- Field assembled only (*easy to follow instructions provided*)
- Specify framework/housing color and drawer color, same as step 2 on page 6.

Example = **DD251WBC01**  
 (for dove gray frame/housing and dove gray drawers)

<b>AA</b>	<b>BB</b>	<b>DD</b>	<b>HH</b>	<b>JJ</b>	<b>KK</b>	<b>PP</b>
Ash	Wedgewood Blue	Dove Gray	Red Baron	Hunter Green	Vulcan Black	Putty



## CONCEPT 17

Cat. No. ■■251WBC17

Consists of:

Qty.	Cat. No.	Description
1	<b>M353030000A0L</b>	Bench Standard Pre-Engineered Cabinet
1	<b>M353030000B0L</b>	Bench Standard Pre-Engineered Cabinet
1	<b>251OPL350</b>	Bench Open Panel Leg
1	<b>251WHD90</b>	Hardwood Work Surface, 90"w
1	<b>251WHD60</b>	Hardwood Work Surface, 60"w
1	<b>250SPLICE</b>	Splice Plate Kit





### CONCEPT 18

Cat. No. ■■251WBC18

Consists of:

Qty.	Cat. No.	Description
1	<b>M353030000A0L</b>	Bench Standard Pre-Engineered Cabinet
1	<b>M353030000B0L</b>	Bench Standard Pre-Engineered Cabinet
1	<b>251OPL350</b>	Bench Open Panel Leg
1	<b>251WHD90</b>	Hardwood Work Surface, 90" w
1	<b>251WHD60</b>	Hardwood Work Surface, 60" w
1	<b>250SPICE</b>	Splice Plate Kit
2	<b>251BRS6021</b>	Bookcase Riser
2	<b>251RBP6021</b>	Bookcase Riser Back Panel
1	<b>251BCR3021</b>	Bookcase Corner Riser
2	<b>79020</b>	Light Fixture



### CONCEPT 19

Cat. No. ■■251WBC19

Consists of:

Qty.	Cat. No.	Description
1	<b>M353030000A0L</b>	Bench Standard Pre-Engineered Cabinet
1	<b>M353030000B0L</b>	Bench Standard Pre-Engineered Cabinet
1	<b>251OPL350</b>	Bench Open Panel Leg
1	<b>251WHD90</b>	Hardwood Work Surface, 90" w
1	<b>251WHD60</b>	Hardwood Work Surface, 60" w
1	<b>250SPICE</b>	Splice Plate Kit
2	<b>251BRS6021</b>	Bookcase Riser
2	<b>251RBP6021</b>	Bookcase Riser Back Panel
1	<b>251BCR3021</b>	Bookcase Corner Riser
2	<b>79020</b>	Light Fixture
4	<b>251BKCD270</b>	Bookcase with Doors, 30" w



# WORK BENCH ACCESSORIES

## Color Selection

Determine the color and add the two letter ■ digits as a prefix to part numbers.

<b>AA</b> Ash	<b>BB</b> Wedgewood Blue	<b>DD</b> Dove Gray	<b>HH</b> Red Baron
<b>JJ</b> Hunter Green	<b>KK</b> Vulcan Black	<b>PP</b> Putty	



## (A) Modular Drawer Cabinets

Choose from any Standard Pre-Engineered Cabinet (pages 7-15) or Slender Pre-Engineered Cabinet (pages 18-22) or create your own custom cabinet (pages 40-43).

Note: Consider cabinets with M locking (Multiple Drawer Access), since tipping is highly unlikely.

## (B) Panel Legs

- One-piece, heavy-gauge welded frame pre-punched
- Supplied with knock-outs for customer supplied electrical outlet
- Supplied with leg levelers and mounting hardware
- Match panel leg height to cabinet height chosen

Specify color

**Open Panel Leg** (for industrial applications)

- No. ■ **251OPL270** - Desk, 26-7/8"H
- No. ■ **251OPL310** - Table, 30-1/8"H
- No. ■ **251OPL350** - Bench, 33-1/4"H
- No. ■ **251OPL400** - Mid-Range, 37-3/16"H
- No. ■ **251OPL490** - Counter, 44-1/4"H

**Closed Panel Leg** (for office applications)

- No. ■ **251CPL270** - Desk, 26-7/8"H
- No. ■ **251CPL310** - Table, 30-1/8"H
- No. ■ **251CPL350** - Bench, 33-1/4"H
- No. ■ **251CPL400** - Midrange, 37-3/16"H
- No. ■ **251CPL490** - Counter, 44-1/4"H

**Stringers - Leg to Leg**

- No. ■ **250STR30** - 30" w
- No. ■ **250STR45** - 45" w
- No. ■ **250STR60** - 60" w
- No. ■ **250STR72** - 72" w
- No. ■ **250STR84** - 84" w
- No. ■ **250STR90** - 90" w
- No. ■ **250STR96** - 96" w

## (C) Side Stops

- Helps to keep small parts from rolling off work-surface
- Front tapered to 1-1/2" above work surface with rounded front edge. Extends 3" above work surface
- Includes mounting fasteners

Specify color

- No. ■ **251WSSR** - Right Side
- No. ■ **251WSSL** - Left Side

## (D) Back Stops

- Extends 3" above work surface
- Match the length of the Back Stop to the work surface width chosen
- Includes mounting fasteners

Specify color

- No. ■ **251WBS60** - 60"w
- No. ■ **251WBS72** - 72"w
- No. ■ **251WBS84** - 84"w
- No. ■ **251WBS90** - 90"w

## (E) Shelf Risers

- Match the width of the Shelf Riser to the work surface width chosen

Specify color

- |                                     |                                     |
|-------------------------------------|-------------------------------------|
| <b>60" w Work Surface</b>           | <b>72" w Work Surface</b>           |
| No. ■ <b>2625</b> - 12"h x 10-1/2"d | No. ■ <b>2626</b> - 12"h x 10-1/2"d |
| No. ■ <b>2628</b> - 18"h x 14"d     | No. ■ <b>2629</b> - 18"h x 14"d     |

## (F) Pick Racks

- Allows easy hanging of plastic bins for additional on-hand storage
- Match the width of the Pick Rack to the Shelf Riser width chosen

Specify color

- No. ■ **2630** - 60"w
- No. ■ **2631** - 72"w

## (G) Plastic Bins

- Impervious to most solvents and corrosives
- Color=Blue only
- No. **78203** - 4-1/8"w x 4-1/8"d x 3"h
- No. **78206** - 4-1/8"w x 7-1/4"d x 3"h
- No. **78209** - 5-7/8"w x 11-1/2"d x 5"h

## (H) Stringers

- Formed steel channel attaches panel leg to cabinet with mounting hardware supplied

Specify color

**60" w Work Surface**

- No. ■ **251STR60SL** - 33-1/4"L used with Slender Cabinet
- No. ■ **251STR60** - 26-1/16"L used with Standard Cabinet

**72" w Work Surface**

- No. ■ **251STR72SL** - 45-1/4"L used with Slender Cabinet
- No. ■ **251STR72** - 38-1/16"L used with Standard Cabinet
- No. ■ **251STR36** - 20-5/8"L used with Slender Cabinet

### (J) Bookcase Risers

- Designed to support the weight of up to three, loaded Bookcases
- Attaches to Work Surface with supplied hardware
- Corner Riser used to join two adjacent ends (includes Back Panel)
- Hardware supplied to support the optional

**No. 79020** Light Fixture

*Bookcase Riser Specify color*

**NO. ■ 251BRS6018** - 60" w x 14" d x 18" h

**NO. ■ 251BRS6021** - 60" w x 14" d x 21" h

**NO. ■ 251BRS6024** - 60" w x 14" d x 24" h

**NO. ■ 251BRS7218** - 72" w x 14" d x 18" h

**NO. ■ 251BRS7221** - 72" w x 14" d x 21" h

**NO. ■ 251BRS7224** - 72" w x 14" d x 24" h

**NO. ■ 251BRS9018** - 90" w x 14" d x 18" h

**NO. ■ 251BRS9021** - 90" w x 14" d x 21" h

**NO. ■ 251BRS9024** - 90" w x 14" d x 24" h

*Bookcase Corner Riser Specify color*

**NO. ■ 251BCR3018** - 90" w x 14" d x 18" h

**NO. ■ 251BCR3021** - 90" w x 14" d x 21" h

**NO. ■ 251BCR3024** - 90" w x 14" d x 24" h

### (K) Bookcases

- Similar construction to an MDC "Housing"
- One bottom shelf and one adjustable shelf included with 100 lb. capacity each
- Overhead storage unit attaches to Riser with supplied hardware
- Can be wall-mounted, hardware not included

*30"W without lockable swing doors Specify color*

**NO. ■ 251BKC270** - 30" w x 14" d x 24-3/4" h

**NO. ■ 251BKC350** - 30" w x 14" d x 31-1/8" h

*30"W with lockable swing doors Specify color*

**NO. ■ 251BKCD270** - 30" w x 14" d x 24-3/4" h

**NO. ■ 251BKCD350** - 30" w x 14" d x 31-1/8" h

*36"W without lockable swing doors Specify color*

**NO. ■ 251BKC270M** - 36" w x 14" d x 24-3/4" h

**NO. ■ 251BKC350M** - 36" w x 14" d x 31-1/8" h

*36"W with lockable swing doors Specify color*

**NO. ■ 251BKCD270M** - 36" w x 14" d x 24-3/4" h

**NO. ■ 251BKCD350M** - 36" w x 14" d x 31-1/8" h

### (L) Bookcase Riser Back Panels

- Protected cord access holes in all four corners
- Formed steel panel attaches to Riser with hardware supplied.

*Specify color*

**NO. ■ 251RBP6018** - 60" w x 18" h

**NO. ■ 251RBP6021** - 60" w x 21" h

**NO. ■ 251RBP6024** - 60" w x 24" h

**NO. ■ 251RBP7218** - 72" w x 18" h

**NO. ■ 251RBP7221** - 72" w x 21" h

**NO. ■ 251RBP7224** - 72" w x 24" h

**NO. ■ 251RBP9018** - 90" w x 18" h

**NO. ■ 251RBP9021** - 90" w x 21" h

**NO. ■ 251RBP9024** - 90" w x 24" h



### (M) Modesty Panel

- Provides privacy below for work bench applications
- Formed steel panel attaches panel leg to cabinet with hardware supplied
- Match modesty panel size to width of work surface and cabinet

*Specify color*

*for 60" w Work Surface with Desk/Table Slender Cabinet*

**NO. ■ 251MDP60270SL**

**NO. ■ 251MDP60270**

*for 60" w Work Surface with Bench/Mid-Range Slender Cabinet*

**NO. ■ 251MDP60350SL**

**NO. ■ 251MDP60350**

*for 72" w Work Surface with Desk/Table Slender Cabinet*

**NO. ■ 251MDP72270SL**

**NO. ■ 251MDP72270**

*for 72" w Work Surface with Bench/Mid-Range Slender Cabinet*

**NO. ■ 251MDP72350SL**

**NO. ■ 251MDP72350**

### (N-1) Under-Counter Shelves

- Provides additional storage space below work surface
- 150Lb. evenly distributed weight capacity, 12-1/2" deep
- Formed steel panel attaches to panel leg and cabinet with brackets and hardware supplied

*Specify color*

*for 60" w Work Surface*

**NO. ■ 251UCS60SL** - Slender Cabinet

**NO. ■ 251UCS60** - Standard Cabinet

*for 72" w Work Surface*

**NO. ■ 251UCS72SL** - Slender Cabinet

**NO. ■ 251UCS72** - Standard Cabinet

### (N-2) Under-Counter Shelves Side-Mounted to Cabinet

- Available in pairs for work surfaces side-mounted to the cabinet (Hi-Lo Bracket).

*Specify color*

*for 60" w Work Surface*

**NO. ■ 251UCSD60** - 2 shelves

*for 72" w Work Surface*

**NO. ■ 251UCSD72** - 2 shelves

# WORK BENCH ACCESSORIES

## WORK SURFACES

Available in Laminate, Steel, Hardwood, or Stainless Cover over Industrial Grade Particle Board (ISPB). Custom lengths for all work surfaces are available on special request.

### Color Selection

Determine which color you need and add the two letter   digits as a prefix to part numbers.

AA	BB	DD	HH	JJ	KK	PP
Ash	Wedgewood Blue	Dove Gray	Red Baron	Hunter Green	Vulcan Black	Putty



**Laminate (WLT)** = Particle board core with plastic laminate cover.

- Ideal for light-duty applications
- 180° soft edge, chip resistant
- Color = Putty or Dove Gray Only.

*Specify color*

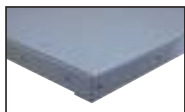
- NO.   **251WLT30** - 30"d x 1-5/8"t x 30"w
- NO.   **251WLT45** - 30"d x 1-5/8"t x 45"w
- NO.   **251WLT60** - 30"d x 1-5/8"t x 60"w
- NO.   **251WLT72** - 30"d x 1-5/8"t x 72"w
- NO.   **251WLT84** - 30"d x 1-5/8"t x 84"w
- NO.   **251WLT90** - 30"d x 1-5/8"t x 90"w
- NO.   **251WLT96** - 30"d x 1-5/8"t x 96"w
- NO.   **251WLT120** - 30"d x 1-5/8"t x 120"w



**Hardwood (WHD)** = Solid-laminated with rounded edges and sealed finish.

- Ideal for precision work
- Sealed Kiln-dried hardwoods
- 3/16" radius edges

- NO. **251WHD30** - 30"d x 1-3/4"t x 30"w
- NO. **251WHD45** - 30"d x 1-3/4"t x 45"w
- NO. **251WHD60** - 30"d x 1-3/4"t x 60"w
- NO. **251WHD72** - 30"d x 1-3/4"t x 72"w
- NO. **251WHD84** - 30"d x 1-3/4"t x 84"w
- NO. **251WHD90** - 30"d x 1-3/4"t x 90"w
- NO. **251WHD96** - 30"d x 1-3/4"t x 96"w
- NO. **251WHD120** - 30"d x 1-3/4"t x 120"w



**Steel (WSL)** = 12 Gauge formed panel with reinforcing channels.

- Ideal for heavy-duty maintenance work
- *Specify color*

- NO.   **251WSL30** - 30"d x 1-3/4"t x 30"w
- NO.   **251WSL45** - 30"d x 1-3/4"t x 45"w
- NO.   **251WSL60** - 30"d x 1-3/4"t x 60"w
- NO.   **251WSL72** - 30"d x 1-3/4"t x 72"w
- NO.   **251WSL84** - 30"d x 1-3/4"t x 84"w
- NO.   **251WSL90** - 30"d x 1-3/4"t x 90"w
- NO.   **251WSL96** - 30"d x 1-3/4"t x 96"w



**Stainless (WST)** = 16-Gauge type 304, #4 finish formed stainless steel cover over Industrial Grade Particle Board (ISPB).

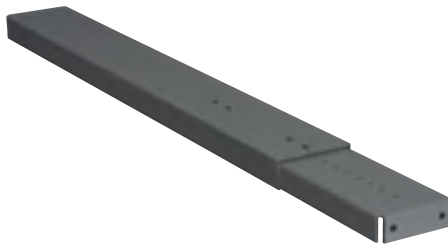
- For the ultimate work bench application
- Edges are wrapped and welded

- NO. **251WST30** - 30"d x 1-5/8"t x 30"w
- NO. **251WST45** - 30"d x 1-5/8"t x 45"w
- NO. **251WST60** - 30"d x 1-5/8"t x 60"w
- NO. **251WST72** - 30"d x 1-5/8"t x 72"w
- NO. **251WST84** - 30"d x 1-5/8"t x 84"w
- NO. **251WST90** - 30"d x 1-5/8"t x 90"w
- NO. **251WST96** - 30"d x 1-5/8"t x 96"w
- NO. **251WST120** - 30"d x 1-5/8"t x 120"w



### Outlet Strip

- Easily attaches to any flanged surface
- UL approved for 15 AMPS @ 125V
- Match the length of the Outlet Strip to the work surface width chosen
- Color = Light Gray only
- **NO. 2662** - 5 outlets - 60" w
- **NO. 2663** - 8 outlets - 72" w

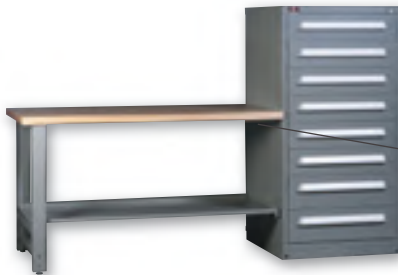


### Adjustable Footrest

- Multi-formed, reinforced steel channels pre-punched for assembly
- Sleeved and adjustable for many length combinations

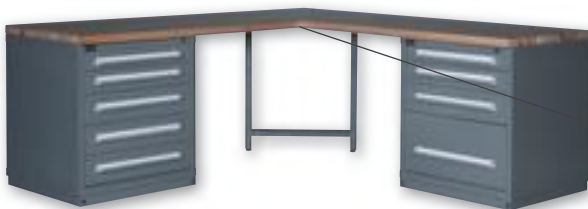
*Specify color*

- **NO. 240853** - 27" to 46-1/4"
- **NO. 240854** - 46-1/4" to 69"
- **NO. 240855** - 18" to 29"



### Hi-Lo Bracket Kit

- Allows for mounting worksurface directly to the side of a cabinet
- Includes mounting fasteners
- Galvanized finish
- **NO. 250HILO**



### Splice Plate Kit

- Allows for attaching two (2) worksurfaces into a corner, creating an "L"
- Includes mounting fasteners
- Galvanized finish
- **NO. 250SPICE**