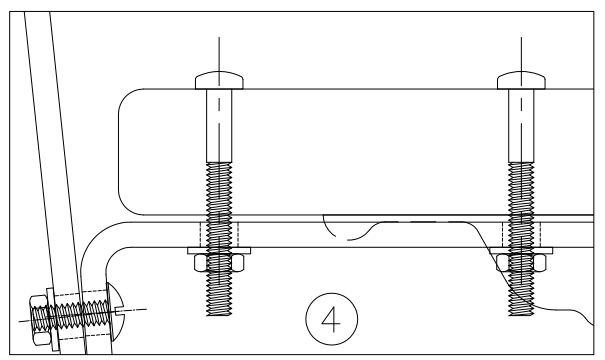
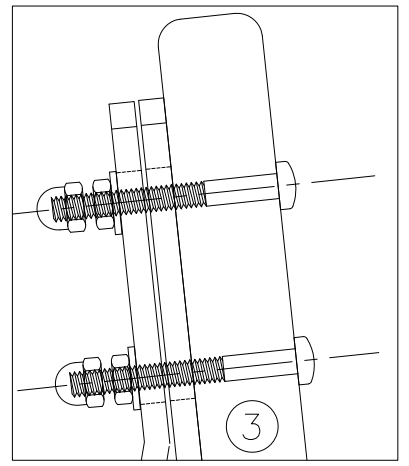
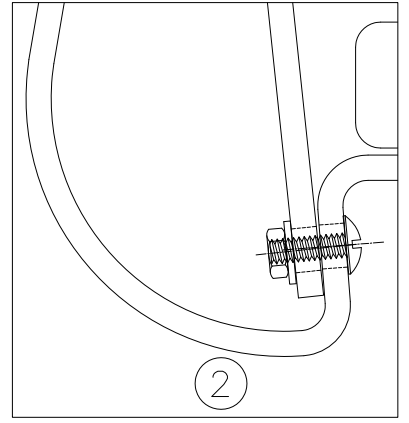
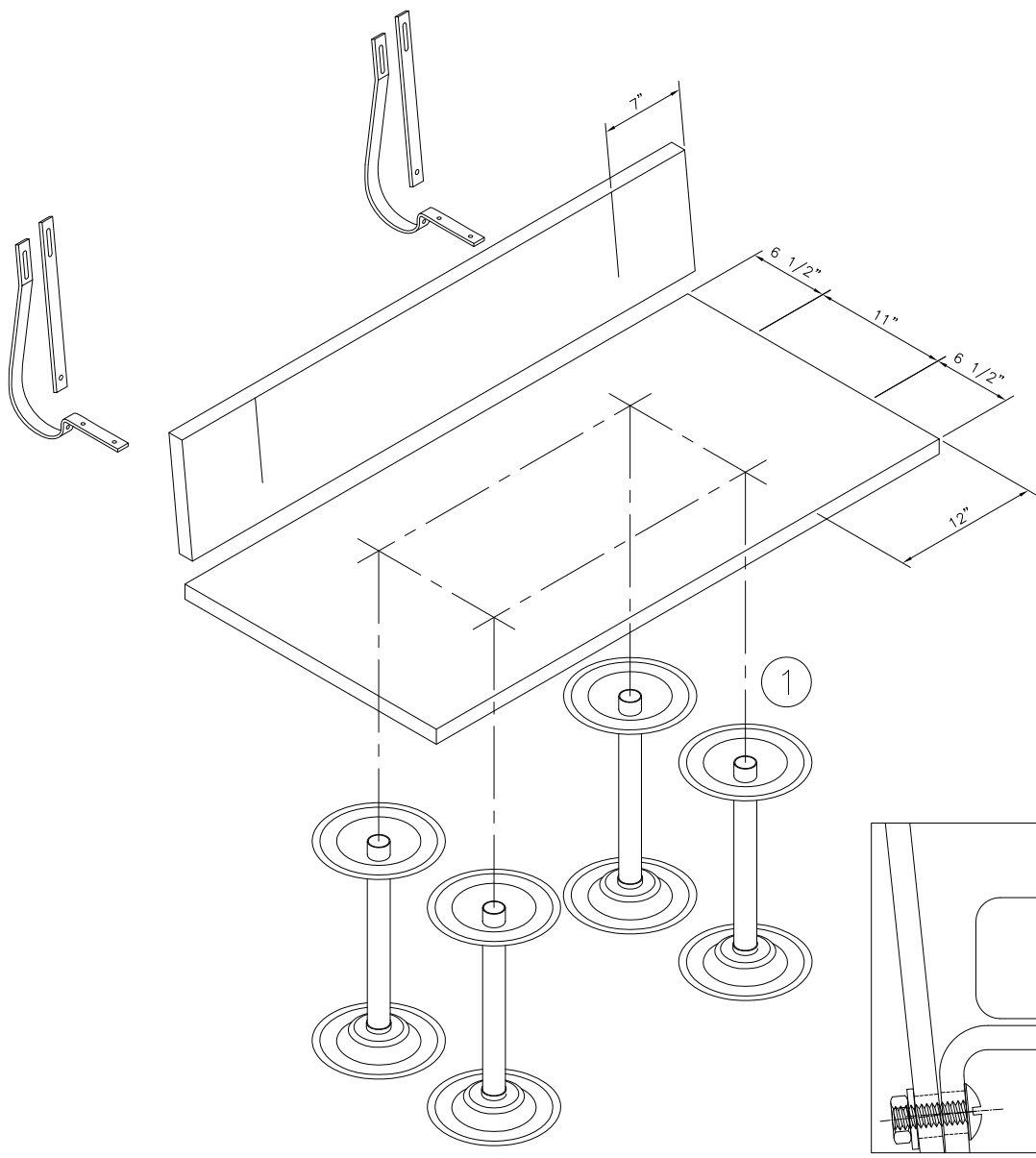


ASSEMBLY OPERATIONS

1. FIRST, MARK PEDESTAL LOCATIONS AND INSTALL PER INSTRUCTION 4777-DA (STANDARD BENCH INSTRUCTIONS) DO NOT ANCHOR AT THIS POINT.
2. ATTACH BRACKET REINFORCEMENT TO MAIN BRACKET PART THROUGH THE BOTTOM HOLE - USING 3/4" BOLT, WASHER AND NUT AS SHOWN.
3. MARK BRACKET HOLE LOCATIONS ON BACKREST MAKING SURE BRACKET WILL CLEAR PEDESTAL FLANGES FOR FINAL POSITION. DRILL 9/32" DIA HOLES THROUGH BACKREST AT MARKED LOCATIONS. ATTACH WITH (2) 1/4-20 X 2 1/4" BOLTS, WASHER, NUTS AND KEP NUTS AS SHOWN.
4. ALIGN BACKREST AND BRACKETS TO UNDERSIDE OF BENCH AND MARK HOLE LOCATIONS. DRILL 9/32" DIA HOLES THROUGH BENCH. ATTACH WITH (2) 1/4-20 X 2 1/4" BOLTS, WASHER AND NUTS AS SHOWN.
5. FLIP BENCH INTO POSITION AND ANCHOR PER INSTRUCTION 4777-DA.



REVISED	DATE	FACTORY NOTE
E-040120-1	3-3-10	ALL DIMENSIONS SHOWN ARE TO BE HELD TO ±1/32" ON FORMATIONS ±1/64" ON HOLE CTRS. UNLESS OTHERWISE SPECIFIED.
		ALL SHARP BURR OR SHEARED EDGES TO BE REMOVED WHERE NOTED.

ASSEMBLY INSTRUCTION FOR BENCH BACK REST LYON LOCKER BENCHES

THIS DWG IN BOOK	LYON LYON WORKSPACE PRODUCTS, INC. P.O. BOX 671 AURORA, IL 60507		
	DATE	DRAWN BY	CHECKED BY
ASSY	3-3-10	ES	
	4777-ADA		SHT. 1