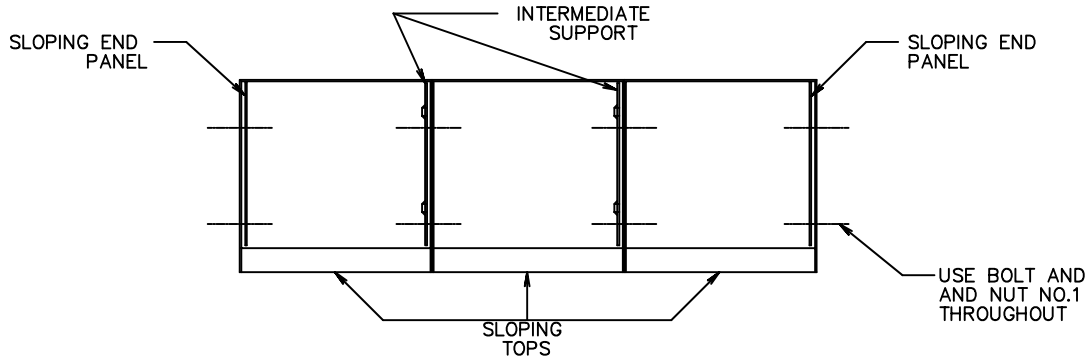
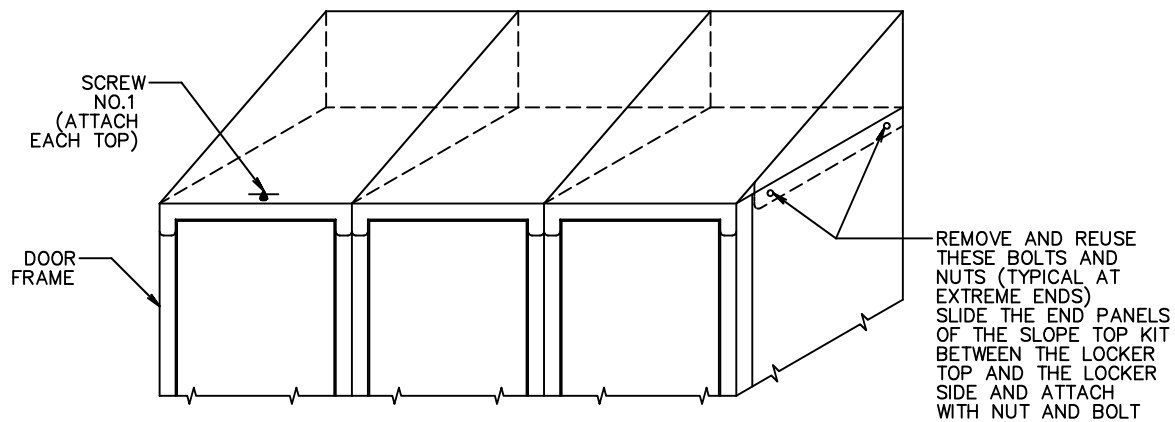
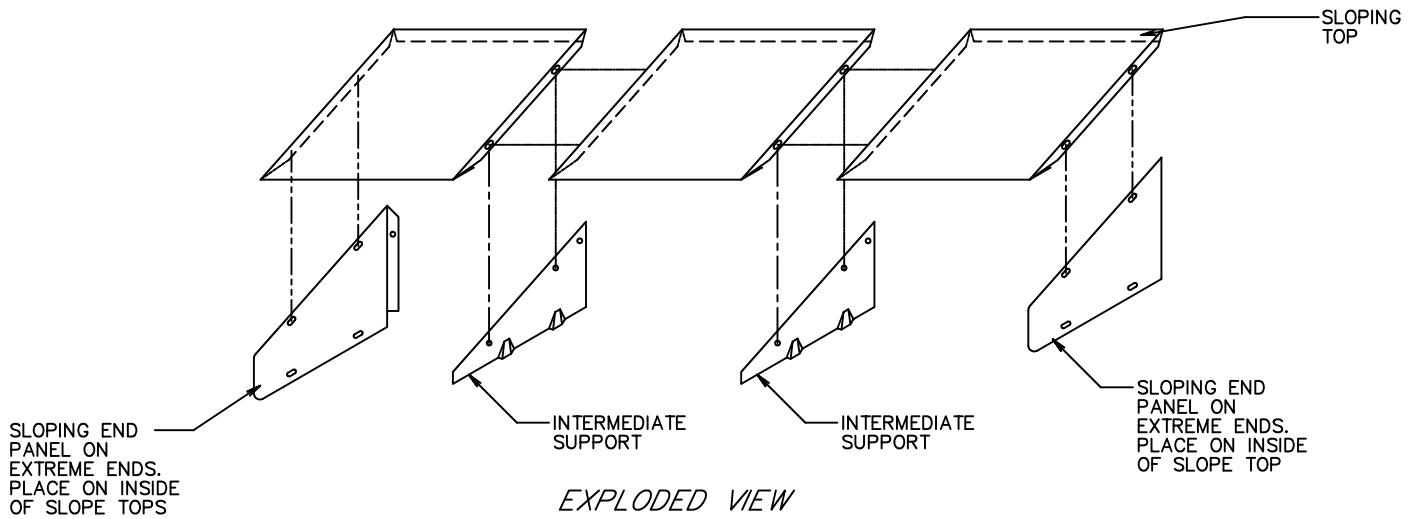


NOTE:
 ALL INTERMEDIATE SUPPORTS ARE TO BE BOLTED TO THE SLOPING TOP ON THE INSIDE OF THE FLANGE AND NOT BETWEEN THE FLANGES OF THE SLOPING TOPS.
 ALL SLOPING END PANELS ARE TO BE BOLTED ON THE INSIDE OF THE FLANGE OF THE SLOPING TOP AND NOT ON THE OUTSIDE.



PLAN SECTION THRU ASSEMBLY



FRONT VIEW

1. REFER TO ASSEMBLY INSTRUCTION FOR ASSEMBLY OF LOCKERS AND ALSO FOR LOCKER ANCHORING INSTRUCTIONS.
2. USING BOLT NO.1 AND NUT NO.1 ASSEMBLE THE SLOPING TOPS, INTERMEDIATE SUPPORTS AND SLOPING END PANELS AS SHOWN IN THE EXPLODED VIEW. MAKE SURE THAT THE INTERMEDIATE SUPPORTS ARE BOLTED TO THE INSIDE OF THE SLOPING TOP FLANGE AND NOT BETWEEN THE FLANGES OF THE TWO SLOPING TOPS. ATTACH THE SLOPING END PANELS AT THE EXTREME ENDS MAKING SURE THEY ARE ON THE INSIDE OF THE FLANGE ON THE SLOPING TOP.
3. AT THE EXTREME ENDS REMOVE THE TWO BOLTS AND NUTS THAT GO THROUGH THE LOCKER SIDE AND THE LOCKER TOP. PLACE THE ASSEMBLED SLOPE TOP KIT ON TOP OF THE LOCKERS AND ATTACH THE SLOPING END PANELS TO THE LOCKER USING BOLTS AND NUTS REMOVED EARLIER. NOTE THAT THE END PANELS ARE PLACED BETWEEN THE TOP AND THE SIDE PANEL. ATTACH BOTH ENDS.
4. USING SCREW NO.1 ATTACH THE FRONT FLANGE OF EACH SLOPING TOP TO THE TOP CROSS MEMBER OF THE DOOR FRAME. GO THROUGH THE HOLE IN THE CROSS MEMBER INTO THE HOLE OF THE SLOPING TOP FRONT FLANGE. USE 1 NO.1 SCREW ON 12" WIDE LOCKERS AND 2 NO.1 SCREWS ON 15" AND 18" WIDE LOCKERS. SEE FRONT VIEW
5. WHEN USED ON DOUBLE ROW, BOLT SLOPING TOPS TOGETHER THROUGH BACK FLANGE WITH BOLT NO.1 AND NUT NO.1.

HARDWARE

BOLT NO.1 = 10-24 X 3/8"
 SPECIAL HEAD MACHINE SCREW
 NUT NO.1 = 10-24 HEX HEAD NUT
 SCREW NO.1 = #10 X 1/2"
 SHEET METAL SCREW

**ASSEMBLY INSTRUCTIONS
 FOR SLOPE TOP KIT**

5158 - DA

DRAWN BY: RICH
 DATE: 2-18-85
 REVISED: 8-16-99
 ECN#: E-081399-01