

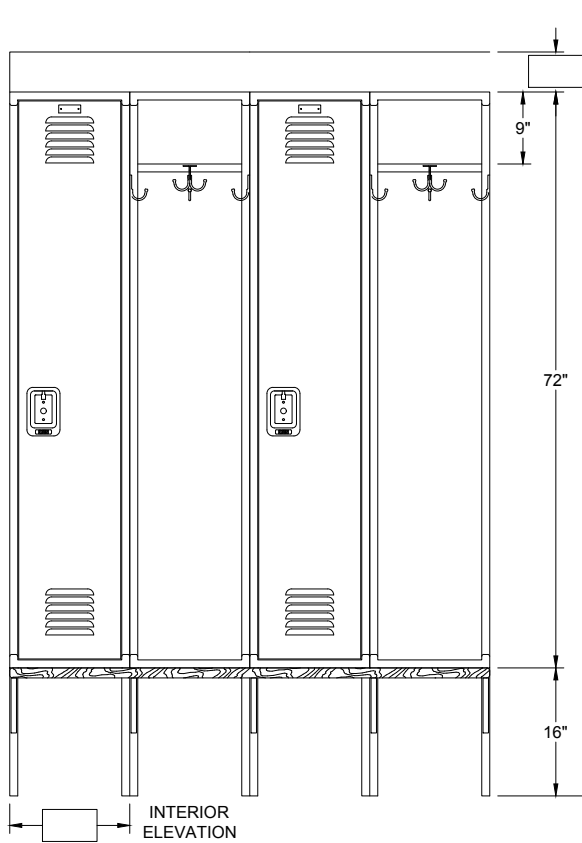
OPTIONAL SLOPING / FLAT TOP  
 OPTIONAL NUMBER PLATE  
 SHELF  
 1-DOUBLE & 3-SINGLE  
 PRONG HOOKS

STAINLESS STEEL  
 RECESSED HANDLE  
 LOCK HOLE FILLER

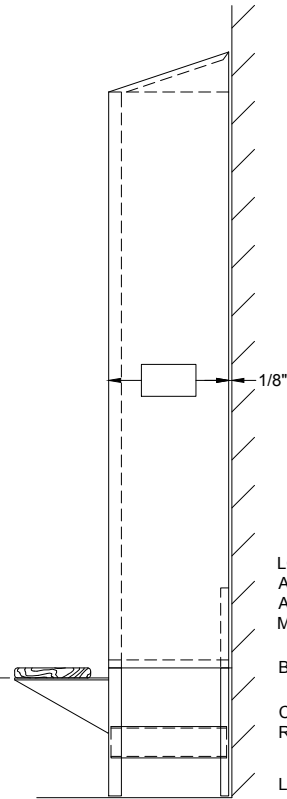
6-6" LOUVERS AT TOP  
 & BOTTOM OF DOOR

BENCH TOP BY  
 OTHERS

BENCH GUSSET



FRONT ELEVATION

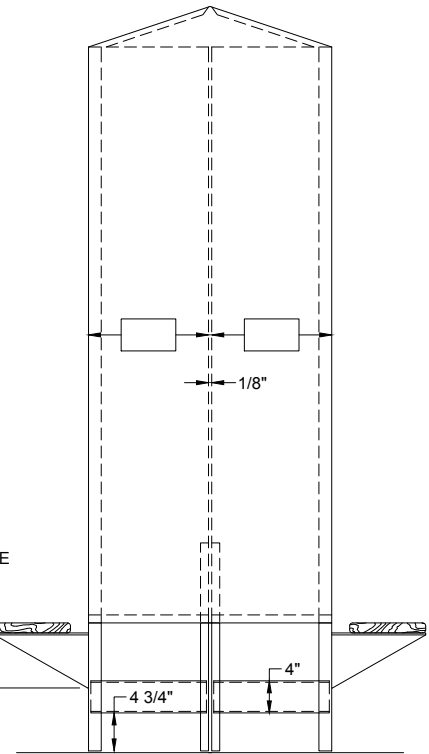


SINGLE ROW  
 END ELEVATION

LOCKERS SHALL BE  
 ANCHORED IN AN  
 APPROVED WORKMANLIKE  
 MANNER

BACK LEG  
 CHANNEL  
 REINFORCEMENT  
 LOCKER FEET

6 7/8"



BACK TO BACK  
 END ELEVATION

BOLT CHANNEL  
 REINFORCEMENT TO LEGS W/  
 10-24 X 3/8" SLOTLESS TR. HD.  
 MACH. SCREWS & HEX NUTS

USE 1 REAR LEG  
 EACH LOCKER

USE 2 REAR LEGS  
 AT RUN END

CHANNEL  
 REINFORCEMENT

LEFT-HAND  
 GUSSETS

11 3/4"

3 15/16"

6 1/2"

1 5/16"

RIGHT-HAND  
 GUSSET

BOLT GUSSETS TO LEGS W/  
 TWO 10-24 X 3/8" SLOTLESS TR.  
 HD. MACH. SCREWS & HEX NUTS

PLAN SECTION



LYON, LLC.  
 P.O. BOX 671  
 AURORA, IL 60507-0671  
 www.lyonworkspace.com

**SPECIAL LEGS, SEAT GUSSETS,  
 & CHANNEL REINFORCEMENTS  
 FOR PACKING HOUSE LOCKERS**

THIS DOCUMENT IS CONFIDENTIAL AND  
 PROPRIETARY. NO PART OF THIS  
 DOCUMENT MAY BE DISCLOSED IN ANY  
 MANNER TO A THIRD PARTY WITHOUT THE  
 PRIOR WRITTEN CONSENT OF LYON L.L.C.