

# SMALL / MEDIUM PARTS

Product stocked in Dove Gray. Other colors available.

Whether you need to store hardware like lug nuts or other small parts like fuses, Lyon has the right solution for your parts department. Cars need plenty of parts that don't need a heavy-duty rack. We have a huge selection of storage options for either smaller or lighter replacement parts.



## PRE-ENGINEERED MODULAR DRAWERS IN SHELVING for 36" Wide 2000 Series Shelving 18" and 24" Deep

- Increase storage density within 18" or 24" deep shelving sections with Modular Drawers for Shelving
- Constructed with beaded front post and angle back posts
- Drawers feature capacity of 400 lbs. and fully extend for visual and physical access
- Shelves feature capacity of 800 lbs. and are adjustable on 1-1/2" centers
- Modular Drawers in Shelving are easy to install using only four brackets. Suspension glide rails lock into brackets, then drawers slide into place
- Existing 36" wide 2000 Series Shelving can be retrofitted with Lyon Modular Drawers

Width	Depth	Upright Height	Type	Item No.	Drawers / Shelves	Bracket Height	Bracket Segment Total	Drawer No. / Drawer Front Height
36"	18"	85" (7'-1")	Starter	<b>J115005</b>	5 Drawers / 5 Shelves	18"	22	(4) 04 / 3-1/16", (1) 06 / 4-5/8"
			Add-On	<b>J115005A</b>	5 Drawers / 5 Shelves			(4) 04 / 3-1/16", (1) 06 / 4-5/8"
	24"		Starter	<b>J115006</b>	5 Drawers / 5 Shelves			(4) 04 / 3-1/16", (1) 06 / 4-5/8"
			Add-On	<b>J115006A</b>	5 Drawers / 5 Shelves			(4) 04 / 3-1/16", (1) 06 / 4-5/8"
36"	18"	85" (7'-1")	Starter	<b>J115015</b>	5 Drawers / 5 Shelves	24"	30	(3) 04 / 3-1/16", (2) 09 / 7"
			Add-On	<b>J115015A</b>	5 Drawers / 5 Shelves			(3) 04 / 3-1/16", (2) 09 / 7"
	24"		Starter	<b>J115016</b>	5 Drawers / 5 Shelves			(3) 04 / 3-1/16", (2) 09 / 7"
			Add-On	<b>J115016A</b>	5 Drawers / 5 Shelves			(3) 04 / 3-1/16", (2) 09 / 7"
36"	18"	85" (7'-1")	Starter	<b>J115025</b>	7 Drawers / 5 Shelves	36"	45	(4) 05 / 3-7/8", (2) 08 / 6-3/16", (1) 09 / 7"
			Add-On	<b>J115025A</b>	7 Drawers / 5 Shelves			(4) 05 / 3-7/8", (2) 08 / 6-3/16", (1) 09 / 7"
	24"		Starter	<b>J115026</b>	7 Drawers / 5 Shelves			(4) 05 / 3-7/8", (2) 08 / 6-3/16", (1) 09 / 7"
			Add-On	<b>J115026A</b>	7 Drawers / 5 Shelves			(4) 05 / 3-7/8", (2) 08 / 6-3/16", (1) 09 / 7"
36"	18"	85" (7'-1")	Starter	<b>J115035</b>	9 Drawers / 5 Shelves	48"	60	(3) 05 / 3-7/8", (5) 07 / 5-7/16", (1) 10 / 7-3/4"
			Add-On	<b>J115035A</b>	9 Drawers / 5 Shelves			(3) 05 / 3-7/8", (5) 07 / 5-7/16", (1) 10 / 7-3/4"
	24"		Starter	<b>J115036</b>	9 Drawers / 5 Shelves			(3) 05 / 3-7/8", (5) 07 / 5-7/16", (1) 10 / 7-3/4"
			Add-On	<b>J115036A</b>	9 Drawers / 5 Shelves			(3) 05 / 3-7/8", (5) 07 / 5-7/16", (1) 10 / 7-3/4"

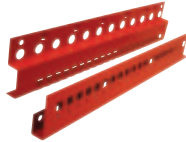
# SMALL / MEDIUM PARTS

## BUILD YOUR OWN 36" WIDE MODULAR DRAWER IN SHELVING



**Step 1**

**Determine Bracket Height** needed from the brackets chart



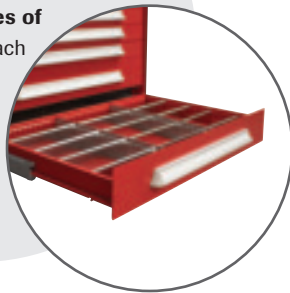
*\*48" High Brackets must be used by mounting two brackets sets stacked with a shelf between them.*

Bracket Height	Bracket Segment Total	Bracket Cat No.
12"	15	JMB3615
18"	22	JMB3622
24"	30	JMB3630
36"	45	JMB3645
48"	60	JMB3660

**Step 2**

**Choose the number of drawers needed,** based on the Drawer No. chart. The total Drawer No.'s. must add up to the bracket segment total.

**THE LYON DRAWER SUSPENSION** features the highest quality glides with drawer **capacities of 400 lbs.** while each shelf yields a weight capacity of 800 lbs.



Product stocked in Dove Gray. Other colors available.

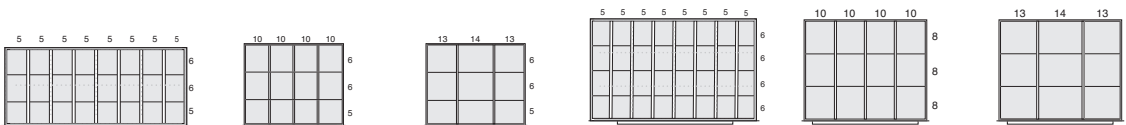
**18" Deep Shelving**

**24" Deep Shelving**

Drawer No.	Usable Height	Front Height	Drawer Cat No.
04	2-1/4"	3-1/16"	N043618NN000K
05	3"	3-7/8"	N053618NN000K
06	3-7/8"	4-5/8"	N063618NN000K
07	4-5/8"	5-7/16"	N073618NN000K
08	5-3/8"	6-3/16"	N083618NN000K
09	6-1/4"	7"	N093618NN000K
10	7"	7-3/4"	N103618NN000K
11	7-3/4"	8-9/16"	N113618NN000K
12	8-1/2"	9-3/8"	N123618NN000K
13	9-3/8"	10-1/8"	N133618NN000K
14	10-1/8"	10-7/8"	N143618NN000K
15	10-7/8"	11-3/4"	N153618NN000K
16	11-3/4"	12-1/2"	N163618NN000K
17	12-1/2"	13-15/16"	N173618NN000K
18	13-1/4"	14-1/16"	N183618NN000K
04	2-1/4"	3-1/16"	N043624NN000K
05	3"	3-7/8"	N053624NN000K
06	3-7/8"	4-5/8"	N063624NN000K
07	4-5/8"	5-7/16"	N073624NN000K
08	5-3/8"	6-3/16"	N083624NN000K
09	6-1/4"	7"	N093624NN000K
10	7"	7-3/4"	N103624NN000K
11	7-3/4"	8-9/16"	N113624NN000K
12	8-1/2"	9-3/8"	N123624NN000K
13	9-3/8"	10-1/8"	N133624NN000K
14	10-1/8"	10-7/8"	N143624NN000K
15	10-7/8"	11-3/4"	N153624NN000K
16	11-3/4"	12-1/2"	N163624NN000K
17	12-1/2"	13-15/16"	N173624NN000K
18	13-1/4"	14-1/16"	N183624NN000K

**Step 3**

**Select Pre-Engineered Layout Kits.** For use with Drawers listed above. For other layouts, order partitions, dividers, and plastic bins from listings below.



Drawer No.	18" Deep Shelving			24" Deep Shelving		
	Layout Kit E 24 Compartments	Layout Kit L 12 Compartments	Layout Kit C 9 Compartments	Layout Kit J 32 Compartments	Layout Kit L 12 Compartments	Layout Kit C 9 Compartments
04 / 05	OE0453618	OL0453618	OL0453618	OJ0453624	OL0453624	OC0453624
06 / 07	OE0673618	OL0673618	OL0673618	OJ0673624	OL0673624	OC0673624
08 / 09	OE0893618	OL0893618	OL0893618	OJ0893624	OL0893624	OC0893624
10 & over	OE1003618	OL1003618	OL1003618	OJ1003624	OL1003624	OC1003624

Compartment Size	3	4	5	6	7	8	9	10	11	12	13	14	15	16	17
Dimension	1-7/8"	2-11/16"	3-1/2"	4-1/4"	5-1/16"	5-7/8"	6-11/16"	7-1/2"	8-1/4"	9-1/16"	9-7/8"	10-11/16"	11-1/2"	12-1/4"	13-1/16"
Compartment Size	18	19	20	21	22	23	24	25	26	27	28	29	30	31	32
Dimension	13-7/8"	14-11/16"	15-1/2"	16-1/4"	17-1/16"	17-7/8"	18-11/16"	19-1/2"	20-1/4"	21-1/16"	21-7/8"	22-11/16"	23-7/16"	24-1/4"	25-1/16"