



# LYON®

**Multi-Level Storage Systems**  
Maximize Your Space Without Moving Out!





## DON'T MOVE WHEN YOU CAN IMPROVE

### Expand Up to Save Big

Upgrading to a multi-level system offers many benefits:

- **Lower Cost:** Avoid construction, relocation, and downtime.
- **Higher Efficiency:** Keep inventory accessible and organized.
- **Optimized Footprint:** Make the most of your existing building space.
- **Scalable Growth:** Add levels or components as your business grows.
- **Improved Safety:** Engineered for strength, stability, and compliance.

## Your Space Has More to Give

Before you think about moving or expanding your building, take a look up. Lyon's industrial storage solutions help you use every inch of your facility - from floor to ceiling.

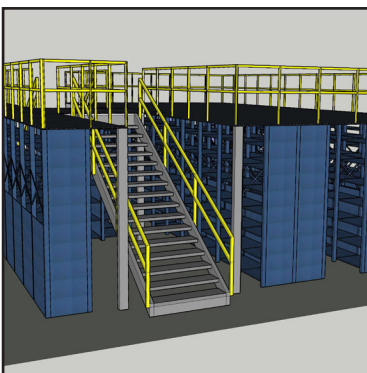
## The Problem and Solution

When your business grows, space gets tight fast. New inventory, added equipment, and more employees can make your warehouse feel smaller every day. But relocating or expanding outward comes with big costs such as new construction, downtime, and lost productivity.

The solution? Instead of spreading out, build up. Lyon offers vertical storage systems that take advantage of unused overhead space. Our heavy-duty shelving, modular drawer cabinets, and multi-level systems help you maximize cubic storage and optimize workflow without increasing your facility's footprint.

## A Higher Level of Service

Lyon is committed to deliver the highest quality product on time for your projects. Our innovative energy is transferred to every project through custom layout an design, agile project management, and turnkey installation.



### Design

Lyon's team works with you to create a customized 3d rendering of your large scale storage systems.



### Project Management

Our collaboration process ensures efficiency at every stage of your storage project.



### Installation

Add value to your next project with our network of expert installers, located nationwide.





## MAXIMIZE VERTICAL SPACE FOR MORE STORAGE

### Is a High Bay System Right for You?

A high bay system may be the best choice if:

- You need to store large, heavy, or bulky items that require durable shelving.
- You operate with forklifts or lift equipment to access upper levels of storage.
- Your facility has high ceilings and you want to maximize every cubic foot.
- You're planning for future growth and want scalable vertical storage.

High bay systems are perfect for manufacturing plants, distribution centers, and industrial warehouses that need high-density, high-capacity storage solutions.

## Reach for the Ceiling

A high bay system is designed to take full advantage of your building's ceiling height. These tall, heavy-duty shelving or racking structures help you store more inventory vertically. This is ideal for warehouses, distribution centers, and facilities managing large or palletized items.

If your floor space is limited but you have plenty of overhead clearance, a high bay system lets you grow upward instead of outward.

## Expand Vertically on Existing Lyon Shelving

Already using Lyon shelving in your facility? You can easily build upward to create a high bay configuration. Lyon's modular shelving design allows you to add vertical extensions or taller upright sections, transforming your current setup into a high bay system without replacing the entire structure. By expanding vertically, you can maximize storage capacity, improve organization, and reduce the need for costly facility expansion.

## Products Commonly Used in High Bay Systems

High bay configurations often use closed shelving units that are easily adjustable and can be fit with dividers to create separate bins. Pallet rack-style configurations are used for mixed inventory or heavier materials.

These systems are engineered for height, strength, and stability, ensuring reliable long-term performance under demanding conditions.



### Industrial Shelving

Add or remove shelves as needed. Several shelf gauges available for various weight capacities.



### Industrial Bin Shelving

Industrial shelving units with added dividers to create smaller bin compartments.



### Pallet Rack Units

Heavy-duty capacity for storing palletized items.





## MAXIMIZE SPACE WITH MULTI-LEVEL ACCESS

### Is a Catwalk System Right for You?

Consider a catwalk system for your space if:

- You need to increase storage density without moving or building out.
- Your inventory includes smaller parts, boxes, or bins that are frequently picked.
- Employees need direct access to upper-level storage without using lifts or ladders.
- You want to keep workflows efficient while maintaining clear floor space for equipment or foot traffic.

Catwalks are especially useful in maintenance facilities, parts departments, and distribution centers where frequent order picking and easy access are priorities.

## Taking It Up A Notch

A catwalk system is a smart way to expand your storage capacity without expanding your footprint. By adding walkways between shelving rows, you can safely access upper levels of inventory while keeping everything organized and within reach. If your warehouse or parts room is running out of floor space but still has unused ceiling height, a catwalk system may be the ideal solution.

## Expand Vertically on Your Existing Lyon Shelving

Already using Lyon shelving? You can easily expand upward by converting your current system into a multi-level catwalk design. Lyon's modular construction allows existing shelving to support upper-level walkways and railings, creating additional storage space while keeping your original investment in place.

With a catwalk system, you can double or even triple your usable storage area within your current facility footprint.

## Products Commonly Used in Catwalk Systems

Catwalk structures typically integrate with industrial shelving systems. Open or closed units create ideal storage space for parts and cartons. Heavy-duty decking materials such as bar grating, plywood, or steel panels are used for the walkways.

These components form the foundation of the system, supporting safe, load-bearing walkways above for employees to move between aisles.



### Industrial Shelving

Add or remove shelves as needed. Drawers can be included to store smaller parts and tools.



### Rivet Rack Shelving

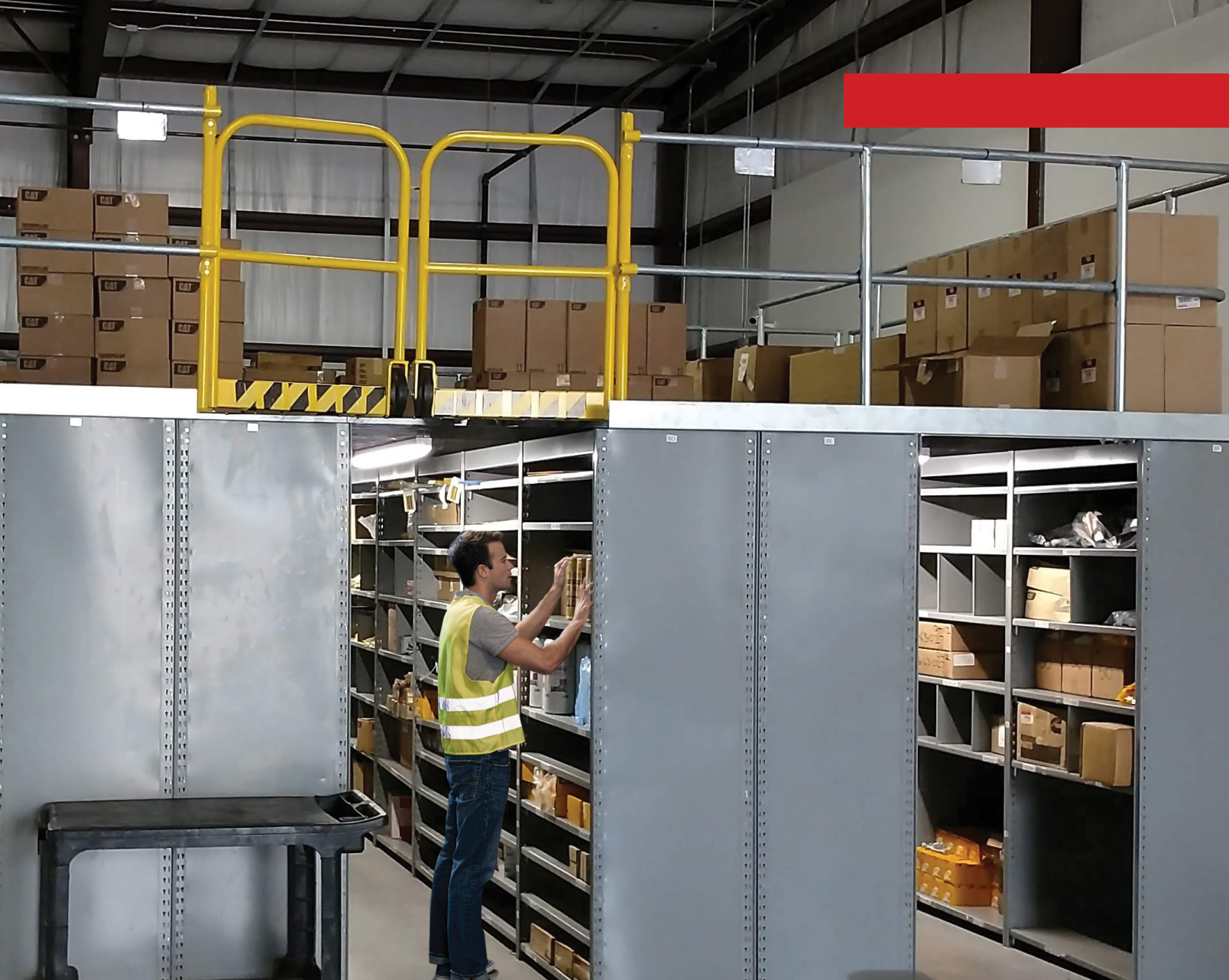
Boltless shelving offers a cost effective option with a higher capacity per level.



### Bulk Storage Rack

Heavy-duty rack with long span beams for storing bulkier items or equipment.





## CREATE A SECOND LEVEL FOR STORAGE OR A WORKSPACE

### Is a Deck Over System Right for You?

A deck over system may be the right solution if:

- You need a continuous, solid upper level for storage or work activities.
- You want to maximize cubic space without reducing floor-level storage.
- Your facility handles larger items, cartons, or boxed goods that don't require open shelving access.
- You prefer a flexible system that can evolve as your storage needs grow.

Deck over systems are often used in warehouses, fulfillment centers, and manufacturing plants that need both efficient storage and additional floor space for operations.



## Double Your Space

A deck over system allows you to create a solid platform above existing shelving or rack structures which turns unused overhead space into valuable storage or workspace. This type of system is ideal for facilities that need additional floor area for bulk storage, packaging stations, or light assembly work without the cost of building expansion.

## Expand Vertically Over Existing Space

One of the biggest advantages of a deck over system is that it can be added above existing shelving or open floor areas. Lyon's modular designs allow for easy integration of deck over platforms, so you can expand vertically without interrupting current operations.

By utilizing the space above your aisles or work zones, you can increase storage capacity, improve workflow, and delay or eliminate the need for a facility expansion.

## Products Commonly Used in Deck Over Systems

Industrial shelving is typically used as the base structure for the deck over. Heavy-duty decking materials such as bar grating, plywood, or steel panels are used for the upper platform. Adding safety railings and stairs ensure safe access between levels.

These components combine to create a sturdy, multi-level solution that expands usable space while maintaining the strength and reliability of Lyon's shelving systems.



### Industrial Shelving

Add or remove shelves as needed. Drawers can be included to store smaller parts and tools.



### Rivet Rack Shelving

Boltless shelving offers a cost effective option with a higher capacity per level.



### Bulk Storage Rack

Heavy-duty rack with long span beams for storing bulkier items or equipment.



## ADD VERTICAL SPACE ABOVE MODULAR CABINETS

### Is a Mini Mezzanine Right for You?

A mini mezzanine may be the ideal solution if:

- You want to add a second level of light storage or work surface above existing cabinets.
- Space is limited on the floor area but has available height to expand vertically.
- You need efficient organization for tools, parts, or maintenance supplies.
- Workflow can be improved by keeping tools below and supplies above in one compact footprint.

Mini mezzanines are a smart choice for maintenance facilities, automotive shops, tool cribs, and parts departments that want to make the most of every inch of space.



### Layer Your Space

A mini mezzanine system is a compact way to expand upward and create extra workspace or light storage above modular drawer cabinets. Designed for smaller areas, these systems help you maximize space in tool rooms, maintenance shops, and parts departments where organization and accessibility are key.

By building up instead of out, you can increase usable space, improve organization, and enhance productivity all within your existing footprint.

### Expand Vertically on Existing Lyon Modular Cabinets

Already have Lyon modular cabinets in place? You can easily add a mini mezzanine platform above your current setup to expand vertically without reconfiguring your entire floor layout. Lyon's modular design allows the cabinets to support an overhead mezzanine, creating a durable and space-saving upper level for storage or light work activities.

### Products Commonly Used in Mini Mezzanine Systems

Modular drawer cabinets are used as the base structure for secure, organized storage. Stairs and light-duty decking turns lower cabinets into a an upper-level platform to access more cabinets or shelving.

These components combine to create a compact yet efficient system that adds functionality and vertical organization to your workspace.



#### Modular Cabinets

Modular drawer cabinets create high density storage for small parts, accessories, and tools.



#### Overhead Units

Overhead units attach directly to the cabinet below to store bulkier items. Available with or without doors.



#### Industrial Shelving

Add or remove shelves as needed. Several shelf gauges available for various weight capacities.



**LYON<sup>®</sup>**

P.O. Box 671  
Aurora, IL 60507-0671

800-323-0082  
[lyon@lyonworkspace.com](mailto:lyon@lyonworkspace.com)  
[lyonworkspace.com](http://lyonworkspace.com)