

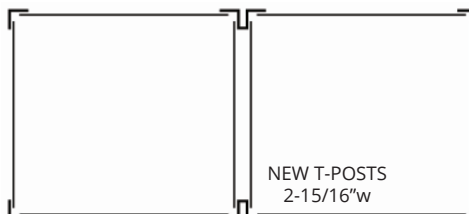
RIVET RACK UPDATE

January 2024

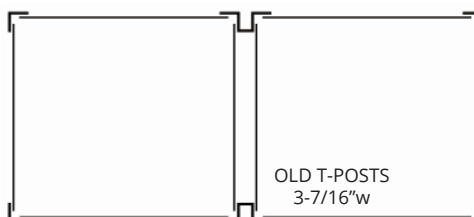
BOLTLESS, ECONOMICAL & EASY CONSTRUCTION

Lyon is updating rivet rack components, reflecting our commitment to continuous improvement and innovation. Here's a quick overview of what to expect:

Compatibility: New posts and beams will be compatible with previous posts and beams. These interchangeable components will allow you to easily replace individual components or add on to existing sections without the need to replace the entire section of rivet rack.



NOTE: There is a variance in the overall width of t-post. If a front t-post is being replaced then it's rear counterpart must be replaced as well.



Rivet Rack with optional Particle Board Decking

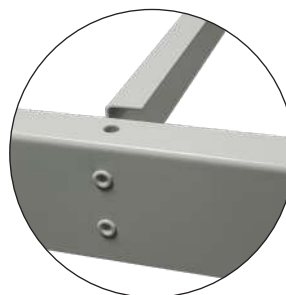
Low Profile Beams: We're bringing back an old favorite! Double rivet low profile beams are coming back to replace the single rivet beams.



The double rivets of these beams allow you to use the same low profile beams top to bottom instead of needing to use the medium-duty beams on the top and bottom levels as stabilizers.

Boltless Center Supports: Previous center supports required bolts to secure them to the beams. Our new style beams include interior rivets on beams 36" w and up. New center supports will attach directly to these rivets creating a truly boltless rack.

NOTE: Old beams must use old center supports and new beams must use new center supports.



Rivets on Beams
36" w and Up



Inside Beam with
Center Support

Pre-designed Units: Starters and add-on units will retain the same base part number, but the components will be updated gradually as the new beams and posts become available. Over the next few months, we'll be transitioning to the new part numbers. Old part numbers will remain available for purchase until stock is depleted.

For any questions or assistance during this transition, please feel free to reach out to our dedicated customer support team. We appreciate your continued partnership and look forward to delivering an even better storage experience with Lyon.



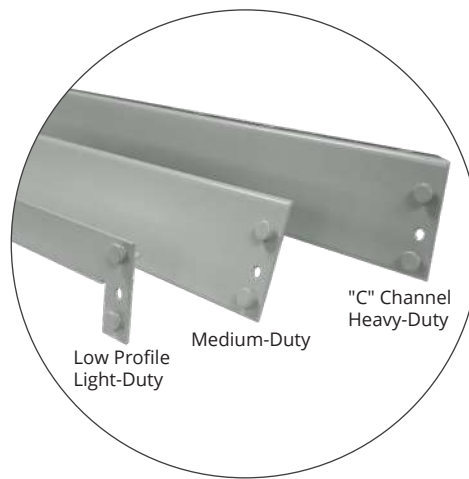
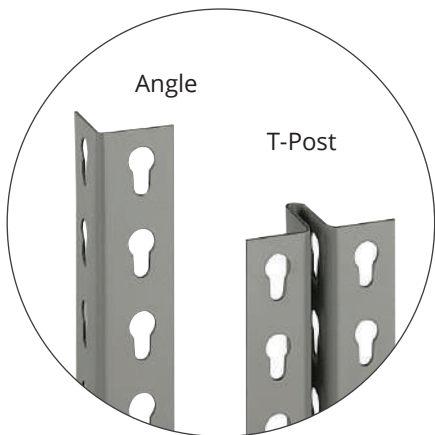
800-323-0082 | lyonworkspace.com

RIVET RACK UPDATE

January 2024

BOLTLESS, ECONOMICAL & EASY CONSTRUCTION

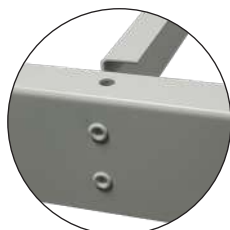
Lyon is updating rivet rack components, reflecting our commitment to continuous improvement and innovation. Reference the tables below for item numbers and their newer counterparts.



POST HEIGHT	ANGLE POST		T-POST	
	NEW SKU	Old Sku	NEW SKU	Old Sku
39"	UL39	72001	-	-
60"	UL60	72003	UT60	72017
72"	UL72	72004	UT72	72018
84"	UL84	72005	UT84	72019
96"	UL96	72006	UT96	72020
120"	UL120	72007	UT120	72021
144"	UL144	72008	UT144	72022
168"	UL168	72009	UT168	72080
192"	UL192	72010	UT192	72081
216"	UL216	72011	UT216	72082
240"	UL240	72012	UT240	72083

BEAM LENGTH	LIGHT-DUTY BEAM		MEDIUM-DUTY BEAM		"C" CHANNEL HEAVY-DUTY BEAM	
	NEW SKU	Old Sku	NEW SKU	Old Sku	NEW SKU	Old Sku
12"	LB12	72025	HB12	72040	-	-
15"	-	-	HB15	72041	-	-
18"	LB18	72028	HB18	72043	-	-
24"	LB24	72029	HB24	72044	-	-
30"	-	-	HB30	72045	-	-
36"	LB36	72031	HB36	72047	-	-
48"	LB48	72033	HB48	72049	-	-
60"	-	-	HB60	72050	-	-
72"	-	-	HB72	72053	CB72	72062
96"	-	-	HB96	72055	CB96	72064

DEPTH	CENTER SUPPORT	
	NEW SKU	Old Sku
12"	CS12	72070
16"	CS16	72072
18"	CS18	72073
24"	CS24	72074
32"	CS32	72076
36"	CS36	72077
48"	CS48	72079



Rivets on Beams 36" w and Up



Inside Beam with Center Support

ITEM	NEW SKU	Old Sku
POST SPLICE	-	NF72098
FOOT PLATE	-	NF72092
ANCHOR	-	NF8861
WALL TIE 9"	BW9	72110
BACK-TO-BACK TIE 18"	BB18	72115
TIE PLATE	MP	72090