

PALLET RACK

IDEAL STORAGE FOR PALLETIZED ITEMS

Pallet rack is our most heavy-duty storage rack! These racks are designed to have pallets loaded and unloaded using forklifts. The teardrop design is interchangeable with all major teardrop-style products on the market today. This allows you to easily upgrade or replace existing sections while using some of your existing components.

The roll-formed uprights with bolted foot plates provide a greater strength-to-weight ratio. Upright structures are shipped assembled with horizontal and diagonal braces already bolted in place.

Roll-formed beams feature an integrated 1-5/8" step for decking and are completely enclosed for clean applications. Each beam has at least three studs to engage the tapered teardrop slots in the upright with a compression fit. Beams can be adjusted on 2" vertical centers. An integral safety lock automatically locks into place when the beam is properly seated.

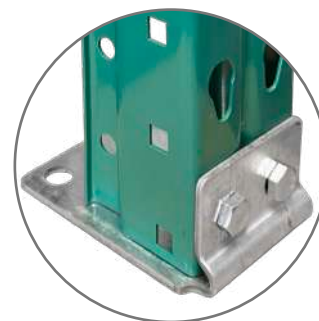
Pallet rack uprights conform to the latest standards set by Rack Manufacturers' Institute LRFD Specifications.



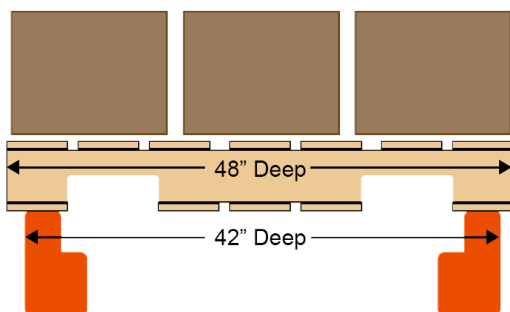
Teardrop Uprights



Beam with Safety Lock



Standard Foot Plate



PALLET RACK DEPTH

42" deep Pallet Rack is the most popular! The most commonly used pallets are 48" deep. Using a 42" deep rack allows the pallet to rest on top of both beams without the need for extra decking. This is also referred to as "Ledge Loading."

PALLET RACK

1 Bolted Uprights

Determine the depth and height needed. Use **2 Uprights** for starter units and for stand-alone sections. Use **1 Upright** for every add-on section.

DEPTH	HEIGHT	CAPACITY (lbs) per Upright	ITEM No.
36"	96"	21,780	25KUF36M096
	120"	21,780	25KUF36M120
	144"	21,780	25KUF36M144
	192"	27,280	25KUF36H192H
	240"	31,201	25KUF36X240H
42"	96"	21,780	25KUF42M096
	120"	21,780	25KUF42M120
	144"	21,780	25KUF42M144
	192"	27,280	25KUF42H192H
	240"	31,201	25KUF42X240H
48"	96"	21,780	25KUF48M096
	120"	21,780	25KUF48M120
	144"	21,780	25KUF48M144
	192"	27,280	25KUF48H192H
	240"	31,201	25KUF48X240H

NOTE: All uprights include a foot plate. 192" and 240" high uprights include heavy-duty foot plates in lieu of standard foot plates.

4 Accessories and Anchoring

ACCESSORIES	DIMENSIONS	ITEM No.
Wall Spacer	6"d	25K06WS
	8"d	25K08WS
Row Spacer	8"d	25K08RS
Floor Mount Column Guard	12"h	SOK12CG
	24"h	SOK24CG
Floor Shim	3.5" x 5"	GVK35FS
Wedge Anchor	.5 x 3-3/4"	NF25163

SEISMIC ZONE	DIMENSIONS	ITEM No.
Floor Shim	5" x 8"	GVK58FS
Heavy-Duty Foot Plate	5" x 8" x 3/8"	25K5838FP

NOTE: In the interest of safety, Lyon strongly recommends that racks be floor and/or wall anchored.

- 25 - Kingfisher Green Uprights
- SO - Safety Orange Beams

2 Beams

Determine the width needed. Use **2 Beams** for each level.

WIDTH	BEAM-FACE HEIGHT	CAPACITY (lbs) per Pair	ITEM No.
96"	4.5"	5,459	SOK96M
108"	5.5"	7,186	SOK108M
120"	5.5"	6,985	SOK120M
144"	6"	6,375	SOK144M

Capacities shown are maximum safe evenly distributed static loads per pair of beams.

3 Front-to-Back Supports OR Decking

Add either front-to-back supports, wire decking, or solid decking to each level.

FTB SUPPORT	DEPTH	ITEM No.	BEAM	QTY PER LEVEL
	36"	GVK36FB	96"w	2
	42"	GVK42FB	108"w	2
			120"w	3
	48"	GVK48FB	144"w	3

WIRE DECKING - GALVANIZED	WIDTH	DEPTH	ITEM No.
	46"	36"	GVKWD4636
	52"		GVKWD5236
	58"		GVKWD5836
	46"	42"	GVKWD4642
	52"		GVKWD5242
	58"		GVKWD5842
	46"	48"	GVKWD4648
	52"		GVKWD5248
	58"		GVKWD5848

SOLID DECKING	WIDTH	DEPTH	ITEM No.
	48"	42"	SODP4842
	60"		SODP6042
	48"	48"	SODP4848
	60"		SODP6048

Decking Sizes to Fit Pallet Rack Beams		
BEAM WIDTH	WIRE DECKING	SOLID DECKING
96"	(2) 46"w	(2) 48"w
108"	(2) 52"w	(1) 48"w + (1) 60"w
120"	(2) 58"w	(2) 60"w
144"	(3) 46"w	(3) 48"w