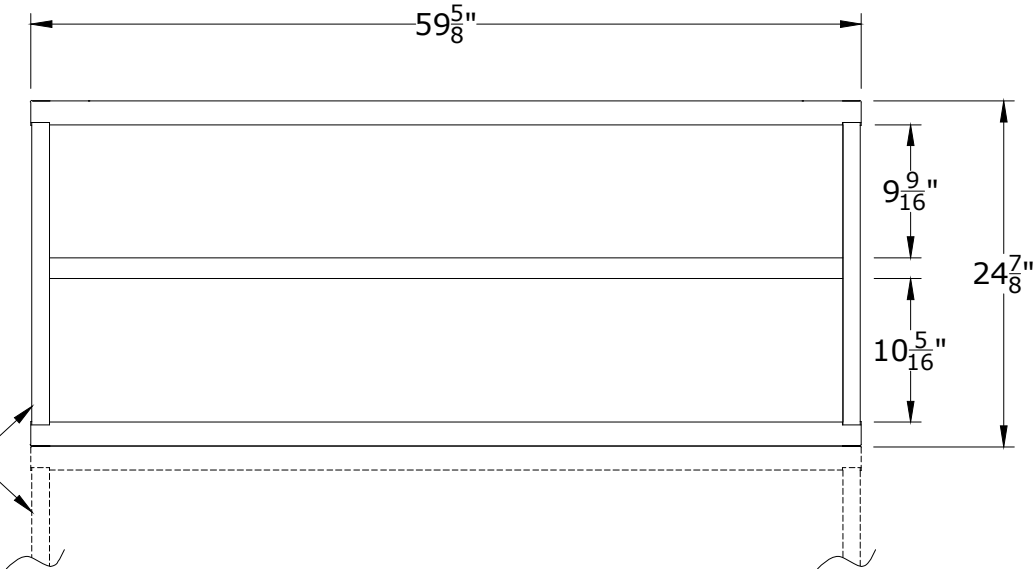


PART NUMBER OPTIONS;

**N27603010500N**

FEATURES;

BASE SHELF AND ADJUSTABLE SHELF @ 3/4" O.C.  
 FLAT BOTTOM ATTACHES DIRECTLY TO CABINET TOP BELOW  
 SHIPPED PRE-ASSEMBLED TO LOWER CABINET IF ORDERED TOGETHER



NOTE:  
 OVERHEAD CABINET WIDTH MUST MATCH  
 WIDTH OF LOWER CABINET. DOUBLE OVERHEAD  
 CABINETS CAN BE ASSEMBLED OVER TWO (2) STANDARD  
 30W CABINETS. FIELD INSTALLATION ONLY. THIS WILL  
 PRODUCE A 3/8" GAP ON EITHER SIDE OF THE OVERHEAD  
 UNIT.

CABINET DEPTH @ 28-1/4"  
 w/ 400lb. CAPACITY SHELVES  
 EACH @ 58-1/8"W x 25"D USABLE

<b>LYON</b>		
P.O. Box 671 AURORA, IL 60507-0671 PHONE: 800-323-0082 www.lyonworkspace.com		
NOTICE: THIS DOCUMENT IS CONFIDENTIAL AND PROPRIETARY. NO PART OF THIS DOCUMENT MAY BE DISCLOSED TO A THIRD PARTY WITHOUT THE PRIOR WRITTEN CONSENT OF LYON LLC		
DATE 07/27/17	DRAWN BY JR	CHECKED BY DWV
DESCRIPTION		
PRE-ENGINEERED OVERHEAD UNIT DESK - DOUBLE		
SHEET	DRAWING NUMBER 2760301050	REV 1