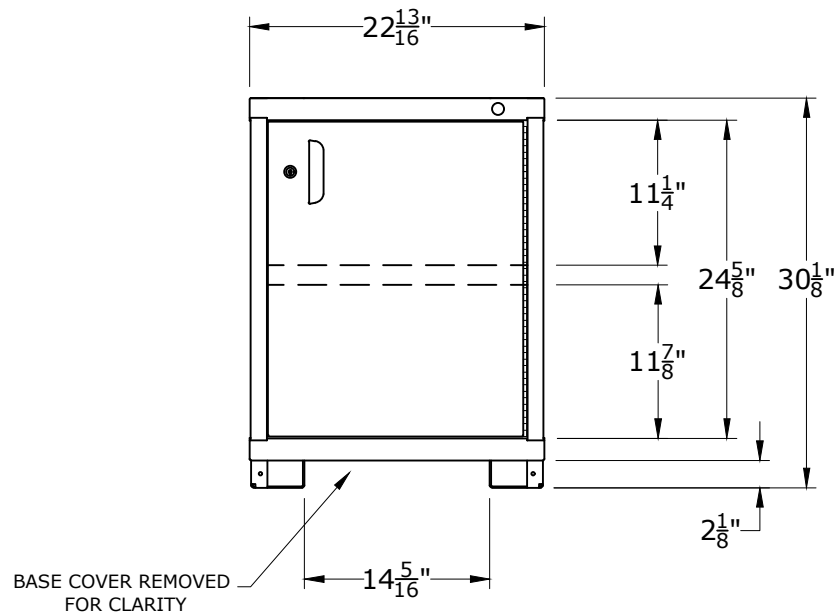


PART NUMBER OPTIONS;

**N31223010070L = LOCKABLE SWING DOOR**  
**N31223010070N = NO LOCKING SYSTEM**

FEATURES;

BASE SHELF AND ADJUSTABLE SHELF BEHIND LOCKABLE SWING DOOR



400lb. CAPACITY SHELVES  
 EACH @ 22-5/16"W x 25"D USABLE

<b>LYON</b>		
P.O. Box 671 AURORA, IL 60507-0671 PHONE: 800-323-0082 www.lyonworkspace.com		
<small>NOTICE: THIS DOCUMENT IS CONFIDENTIAL AND PROPRIETARY. NO PART OF THIS DOCUMENT MAY BE DISCLOSED TO A THIRD PARTY WITHOUT THE PRIOR WRITTEN CONSENT OF LYON LLC</small>		
DATE 06/26/17	DRAWN BY JR	CHECKED BY DWV
DESCRIPTION		
PRE-ENGINEERED SHELF CABINET TABLE - SLENDER		
SHEET	DRAWING NUMBER 3122301007	REV 1