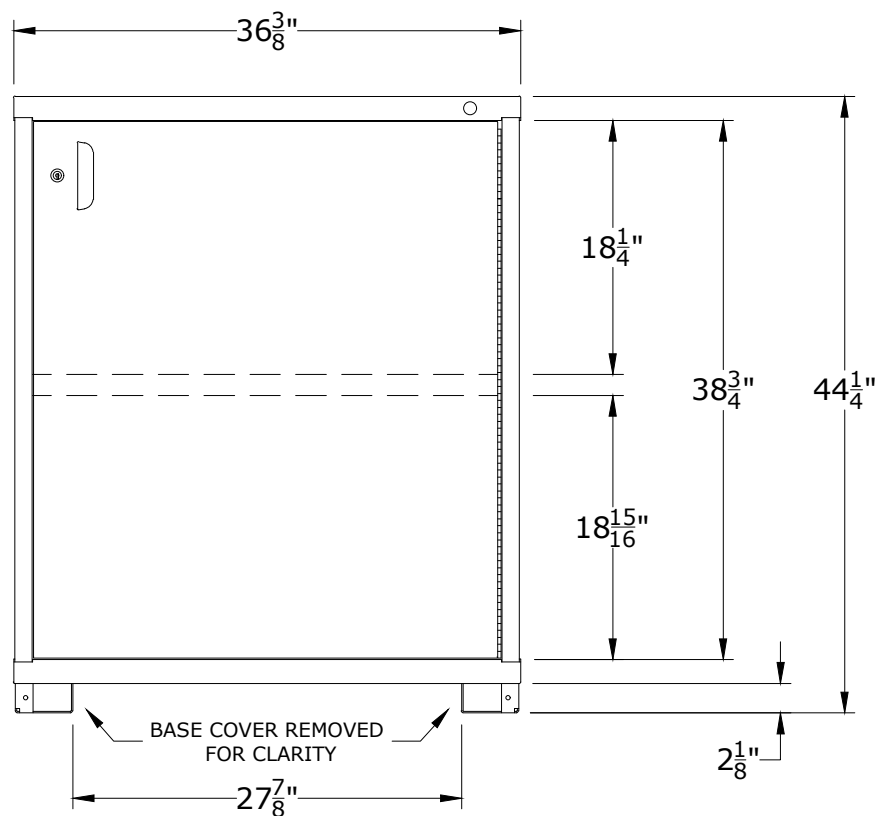


PART NUMBER OPTIONS;

N49363010210L=LOCKABLE SWING DOOR
N49363010210N=NO LOCKING SYSTEM

FEATURES;

BASE SHELF AND ADJUSTABLE SHELF BEHIND LOCKABLE SWING DOOR



CABINET DEPTH @ 28-1/4" w/
 400lb. CAPACITY SHELVES
 EACH @ 34-7/8"W x 25"D USABLE

LYON P.O. Box 671
 AURORA, IL 60507-0671
 PHONE: 800-323-0082
 www.lyonworkspace.com

NOTICE: THIS DOCUMENT IS CONFIDENTIAL AND PROPRIETARY. NO PART OF THIS DOCUMENT MAY BE DISCLOSED TO A THIRD PARTY WITHOUT THE PRIOR WRITTEN CONSENT OF LYON LLC

DATE 07/10/17	DRAWN BY JR	CHECKED BY DWV
------------------	----------------	-------------------

DESCRIPTION

PRE-ENGINEERED
 SHELF CABINET
 COUNTER - MEDIUM

SHEET	DRAWING NUMBER 4936301021	REV 1
-------	------------------------------	----------