

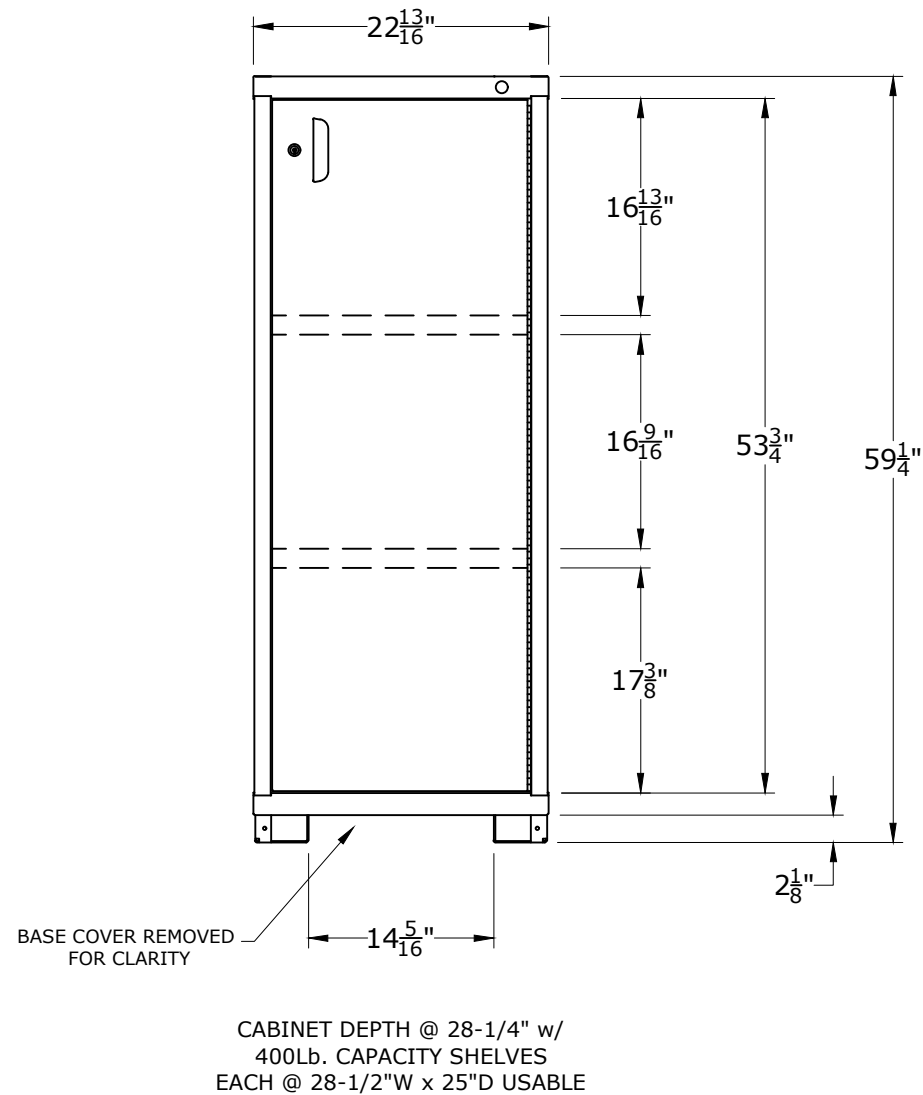
PART NUMBER OPTIONS:

N6822301022L = LOCKABLE SWING DOOR

N6822301022N = NO LOCKING SYSTEM

FEATURES:

BASE SHELF AND TWO (2) ADJUSTABLE SHELVES BEHIND LOCKABLE SWING DOOR



LYON P.O. Box 671 AURORA, IL 60507-0671 PHONE: 800-323-0082 www.lyonworkspace.com		
NOTICE: THIS DOCUMENT IS CONFIDENTIAL AND PROPRIETARY. NO PART OF THIS DOCUMENT MAY BE DISCLOSED TO A THIRD PARTY WITHOUT THE PRIOR WRITTEN CONSENT OF LYON LLC		
DATE 06/29/17	DRAWN BY JR	CHECKED BY DWV
DESCRIPTION PRE-ENGINEERED SHELF CABINET EYE LEVEL - SLENDER		
SHEET 1	DRAWING NUMBER 6822301022	REV 1