

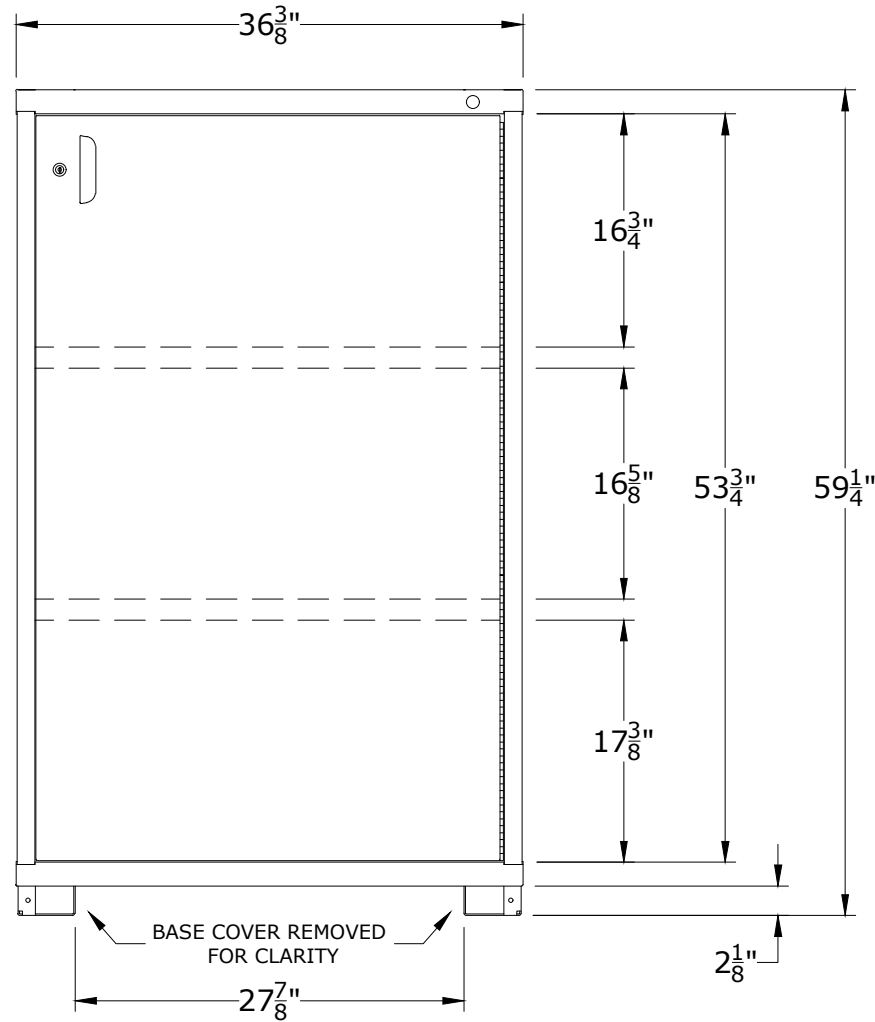
PART NUMBER OPTIONS;

**N68363010220L = LOCKABLE SWING DOOR**

**N68363010220N = NO LOCKING SYSTEM**

FEATURES;

BASE SHELF AND TWO (2) ADJUSTABLE SHELVES BEHIND LOCKABLE SWING DOOR



CABINET DEPTH @ 28-1/4" w/  
400lb. CAPACITY SHELVES  
EACH @ 34-7/8"W x 25"D USABLE

**LYON** P.O. Box 671  
AURORA, IL 60507-0671  
PHONE: 800-323-0082  
www.lyonworkspace.com

NOTICE: THIS DOCUMENT IS CONFIDENTIAL AND PROPRIETARY. NO PART OF THIS DOCUMENT MAY BE DISCLOSED TO A THIRD PARTY WITHOUT THE PRIOR WRITTEN CONSENT OF LYON LLC

DATE 07/13/17	DRAWN BY JR	CHECKED BY DWV
------------------	----------------	-------------------

DESCRIPTION  
**PRE-ENGINEERED  
SHELF CABINET  
EYE LEVEL - MEDIUM**

SHEET	DRAWING NUMBER 6836301022	REV 1
-------	------------------------------	----------