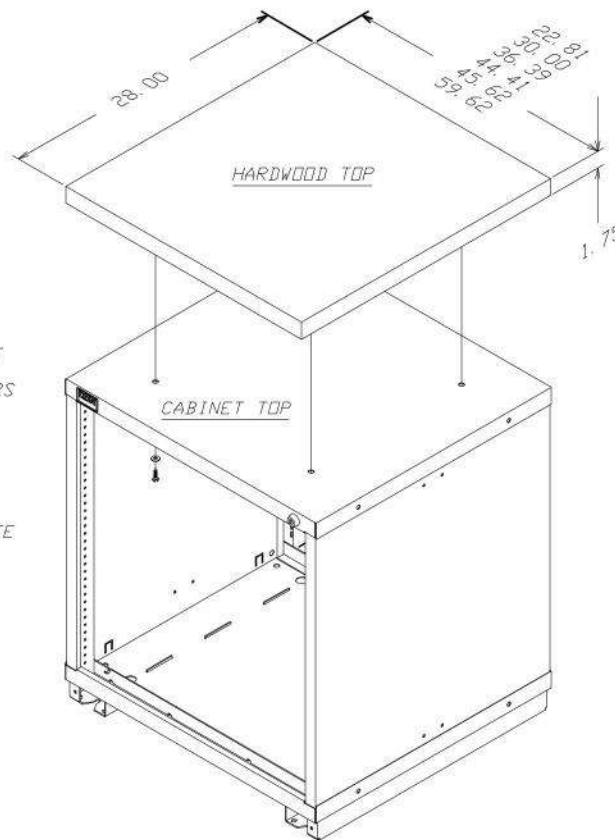


INSTALLATION OPERATIONS

1. REFER TO OWNERS MANUAL FOR CABINET INSTALLATION AND ANCHORING.
2. PILOT HOLES MUST BE DRILLED INTO THE HARDWOOD TOP. DRILL FOUR (4) 13/64" DIAMETER HOLES ONE INCH (1") DEEP PER DETAIL 1.
3. KNOCKOUT HOLES ARE PROVIDED ON THE TOP OF THE CABINET. PUNCH THESE OUT WITH A SCREWDRIVER OR OTHER TOOL.
4. BEFORE SECURING THE HARDWOOD TOP TO THE CABINET TOP, REMOVE SUFFICIENT DRAWERS AND CARRIER ASSEMBLIES. MARK SPECIFIC LOCATIONS OF THE DRAWERS AND CARRIERS FOR REINSTALLATION.
5. ATTACH THE HARDWOOD TOP TO THE CABINET TOP WITH THE SUPPLIED FOUR (4) 1/4" x 1" LONG LAG SCREWS AND 1/4" PLAIN WASHERS. BE SURE TO LUBRICATE THE THREADS OF THE LAG SCREWS TO ASSURE EASIER TIGHTENING. REPLACE DRAWERS AND CARRIERS INTO SPECIFIC LOCATIONS AND CHECK FOR PROPER DRAWER OPERATION.

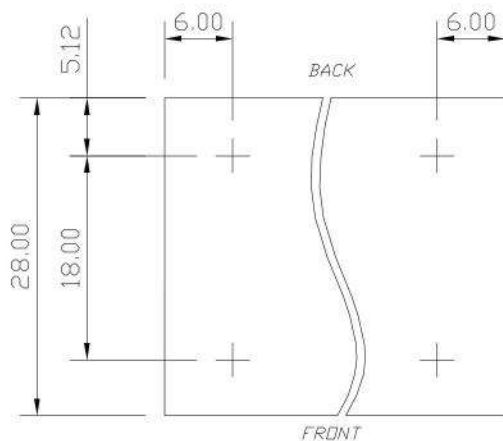


(4) 1/4" FLAT WASHER

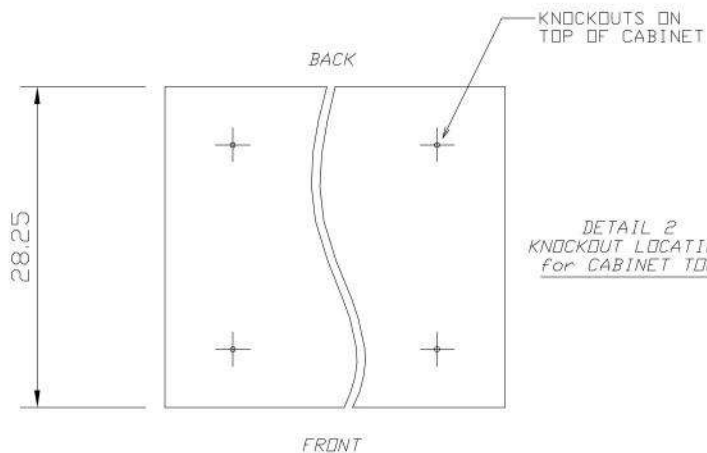


(4) 1/4" x 1" HEX HEAD LAG SCREW

SUPPLIED FASTENERS



DETAIL 1
DRILL PATTERN
for HARDWOOD TOP



DETAIL 2
KNOCKOUT LOCATION
for CABINET TOP

LYON P.O. Box 671
AURORA, IL 60507-0671
PHONE: 630-852-8941
FAX: 800-367-6681

NOTICE: THIS IS A CONFIDENTIAL DISCLOSURE LOANED BY LYON WORKSPACE FOR REFERENCE PURPOSES ONLY

DATE 01-19-12	DRAWN BY JR	CHECKED BY DWV
------------------	----------------	-------------------

DESCRIPTION		
INSTALLATION HARDWOOD TOP MDC		

SHEET -	DRAWING NUMBER 5171-DA	REV 5
------------	----------------------------------	----------