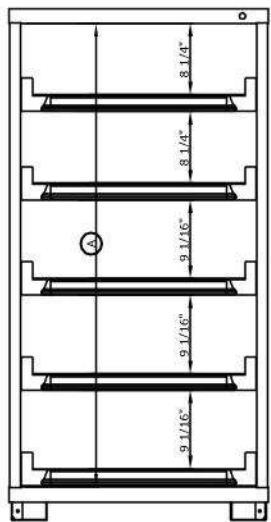


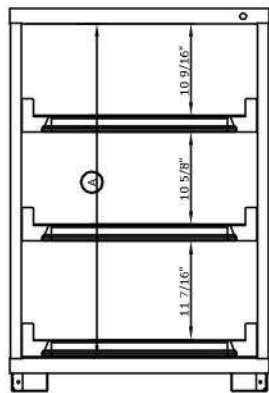
EXAMPLES OF ROLLOUT SHELF QUANTITIES, LOCATIONS and CLEARANCES BY CABINET HEIGHT

ROLLOUT SHELVES CANNOT BE USED IN CONJUNCTION WITH SWING DOORS. LATCH-IN/LATCH-OUT CAN BE ADDED TO ROLLOUT SHELVES

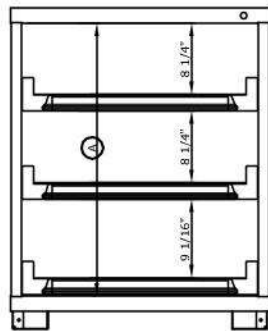
DEPENDING ON THE ITEMS BEING STORED, SHELVES CAN BE ADDED, REMOVED OR POSITIONED SUCH TO ACCOMODATE YOUR NEEDS



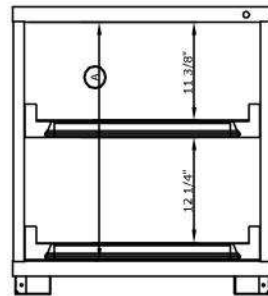
680 CABINET
(MAX 13 SHELVES)



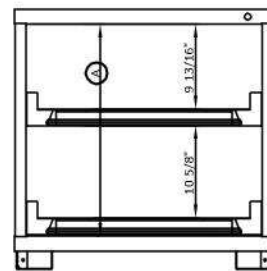
490 CABINET
(MAX 9 SHELVES)



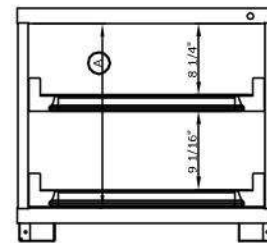
400 CABINET
(MAX 8 SHELVES)



350 CABINET
(MAX 7 SHELVES)

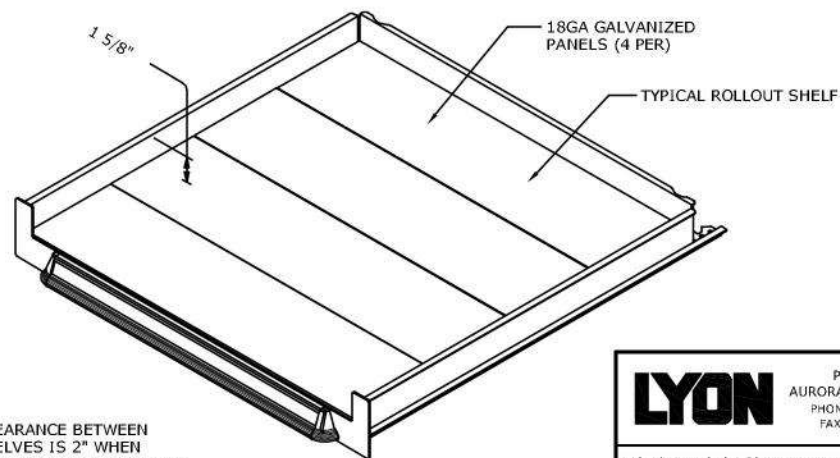
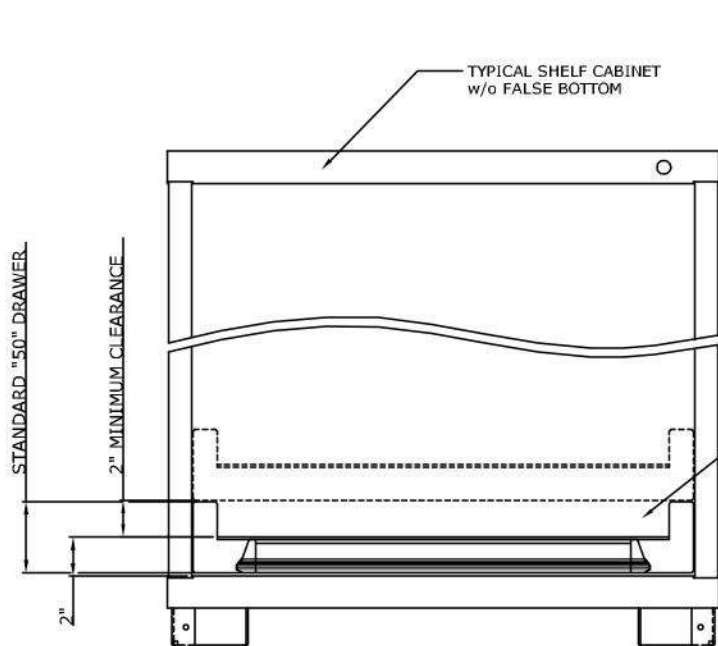


310 CABINET
(MAX 6 SHELVES)



270 CABINET
(MAX 5 SHELVES)

| CABINET HEIGHT | (A) |
|----------------|-----------|
| 680 | 53 11/16" |
| 490 | 38 3/4" |
| 400 | 31 5/8" |
| 350 | 27 11/16" |
| 310 | 24 9/16" |
| 270 | 21 7/16" |



MINIMUM CLEARANCE BETWEEN ROLLOUT SHELVES IS 2" WHEN SHELVES ARE INSTALLED ADJACENT TO EACH OTHER. CLEARANCE WILL INCREASE BY APPROX 3/4" THEREAFTER.

LYON P.O. Box 671
AURORA, IL 60507-0671
PHONE: 630-892-8941
FAX: 800-367-6661

NOTICE: THIS IS A CONFIDENTIAL DISCLOSURE LOANED BY LYON WORKSPACE FOR REFERENCE PURPOSES ONLY

| | | |
|------------------|----------------|-------------------|
| DATE 07-19-12 | DRAWN BY JR | CHECKED BY DWV |
|------------------|----------------|-------------------|

DESCRIPTION
**INSTALLATION
ROLLOUT SHELVES
MDC**

| | | |
|------------|---------------------------------|----------|
| SHEET 1 | DRAWING NUMBER SS1124 | REV 1 |
|------------|---------------------------------|----------|