



ATTACHMENT OF FOOTREST

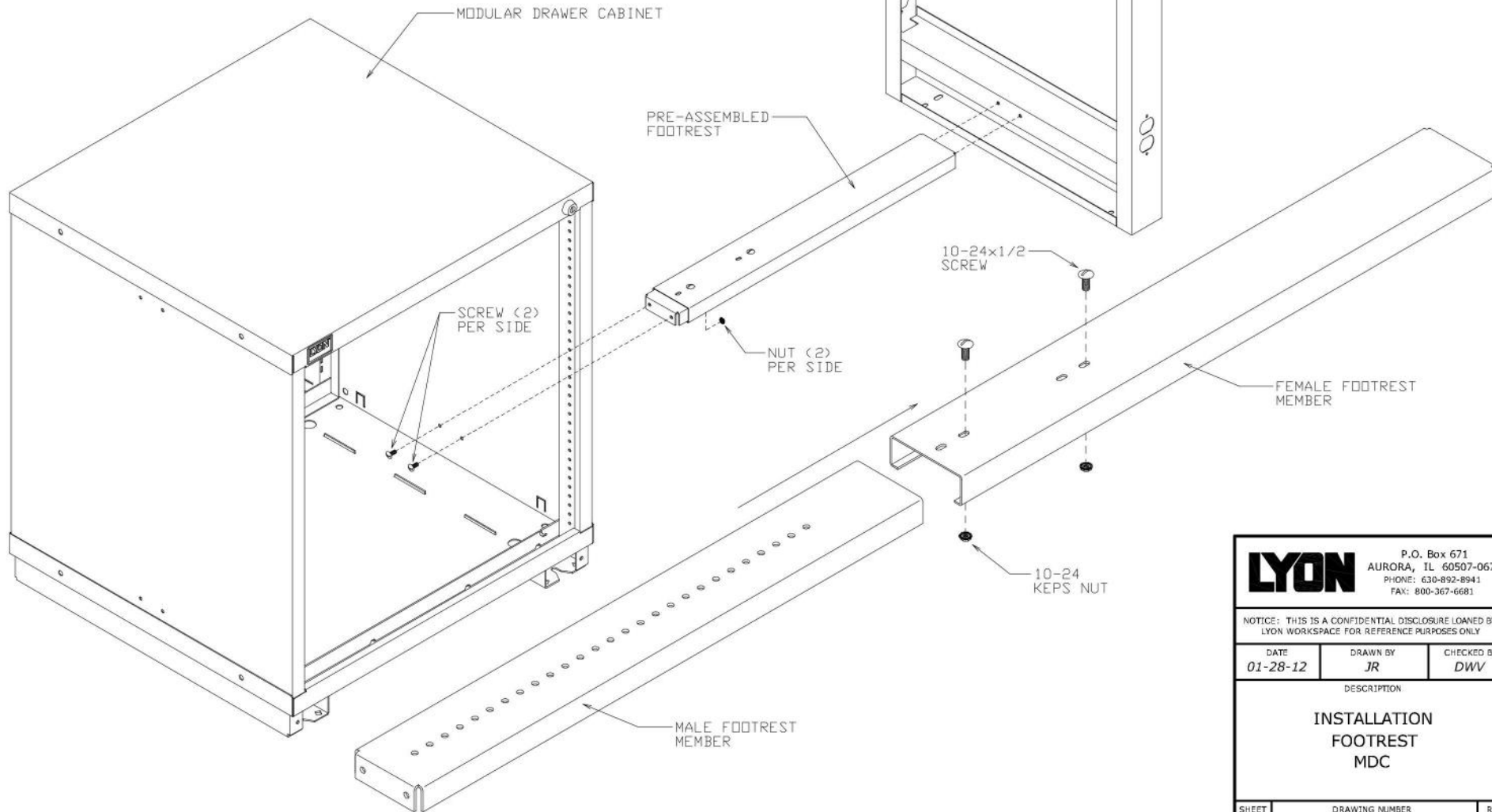
Remove sufficient bottom drawers and carriers from the Cabinet, marking specific locations for reinstallation. Slide the two adjustable parts together and attach to cabinet and Panel Leg with the 10-24 x 1/2" Machine Screws and 10-24 Kep Nuts. Be sure that the dimension between the Cabinet and Panel Leg are equal both at top and bottom. Finish by attaching both adjustable parts together. Always attach a Panel Leg and Cabinet together with a footrest. Replace drawers and carriers into specific locations and check for proper operation.

NOTE: Installation is the same if attaching one (1) footrest to two (2) Cabinets or when attaching two (2) footrests, one per side, to one (1) Panel Leg.

 (6) 10-24 x 1/2" MACHINE SCREW

 (6) 10-24 KEP NUT

HARDWARE



LYON P.O. Box 671
AURORA, IL 60507-0671
PHONE: 630-892-8941
FAX: 800-367-6681

NOTICE: THIS IS A CONFIDENTIAL DISCLOSURE LOANED BY LYON WORKSPACE FOR REFERENCE PURPOSES ONLY

DATE 01-28-12	DRAWN BY JR	CHECKED BY DWV
------------------	----------------	-------------------

DESCRIPTION INSTALLATION FOOTREST MDC
--

SHEET -	DRAWING NUMBER SS1329	REV 1
------------	--------------------------	----------