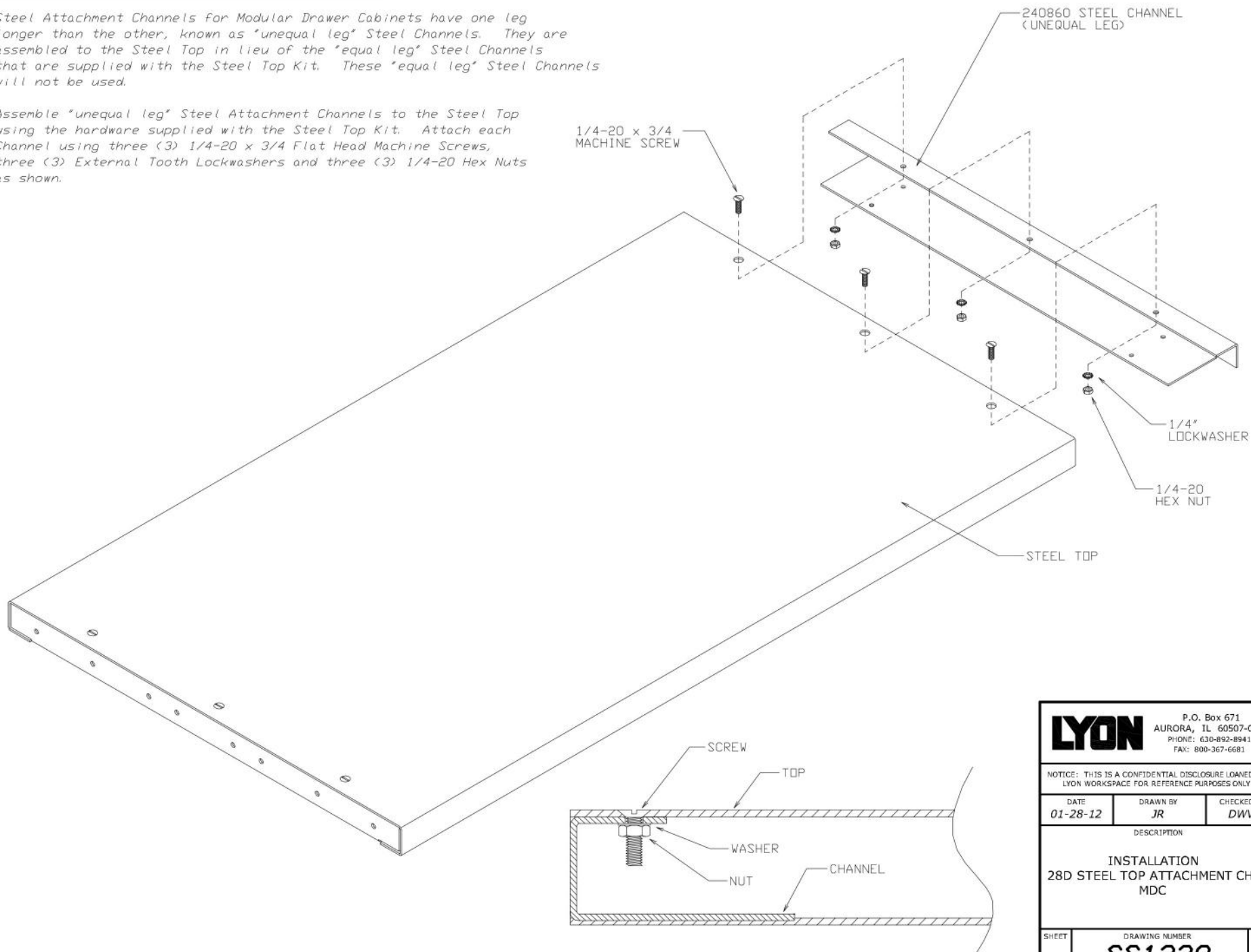


ATTACHMENT OF STEEL TOP CHANNELS

Steel Attachment Channels for Modular Drawer Cabinets have one leg longer than the other, known as "unequal leg" Steel Channels. They are assembled to the Steel Top in lieu of the "equal leg" Steel Channels that are supplied with the Steel Top Kit. These "equal leg" Steel Channels will not be used.

Assemble "unequal leg" Steel Attachment Channels to the Steel Top using the hardware supplied with the Steel Top Kit. Attach each Channel using three (3) 1/4-20 x 3/4 Flat Head Machine Screws, three (3) External Tooth Lockwashers and three (3) 1/4-20 Hex Nuts as shown.



LYON		P.O. Box 671 AURORA, IL 60507-0671 PHONE: 630-892-8941 FAX: 800-367-6681
NOTICE: THIS IS A CONFIDENTIAL DISCLOSURE LOANED BY LYON WORKSPACE FOR REFERENCE PURPOSES ONLY		
DATE 01-28-12	DRAWN BY JR	CHECKED BY DWV
DESCRIPTION INSTALLATION 28D STEEL TOP ATTACHMENT CHNL MDC		
SHEET -	DRAWING NUMBER SS1330	REV 1