

PERFORATED LOCKER TOP
NUMBER PLATE

DOOR PAN REINFORCEMENT
W/ PEG BOARD PUNCHING

CONTINUOUS HINGE

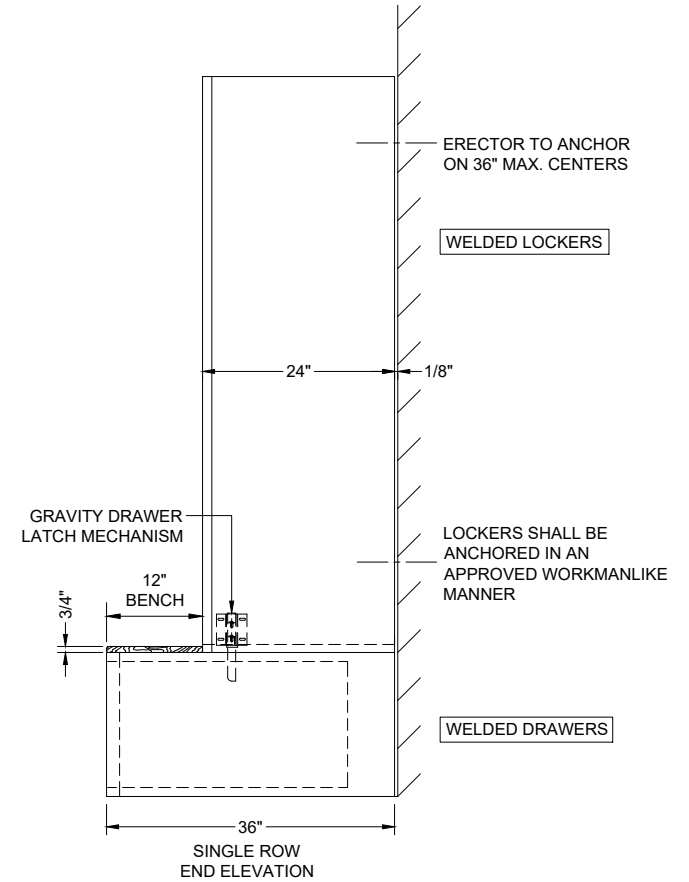
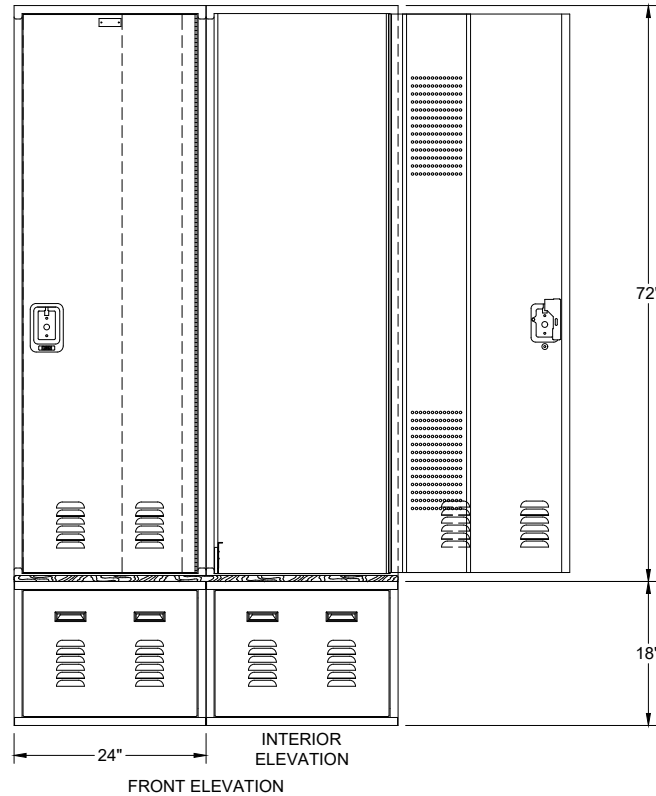
STAINLESS STEEL
RECESSED HANDLE
LOCK HOLE FILLER

2 ROWS OF 6-3 1/2" LOUVERS
AT BOTTOM OF DOORS ONLY

16 GA. LOCKER BOTTOM

LOCKER BENCH TOP

LOWER DRAWER UNIT
2 ROWS OF 6-3 1/2" LOUVERS ON
FRONT OF PULL OUT DRAWER



WELDED VALOR LOCKER FRAMES 24" X 24" X 72" S.R.S.T. W/ WELDED LOWER COMPARTMENT 24" X 36" X 18"